

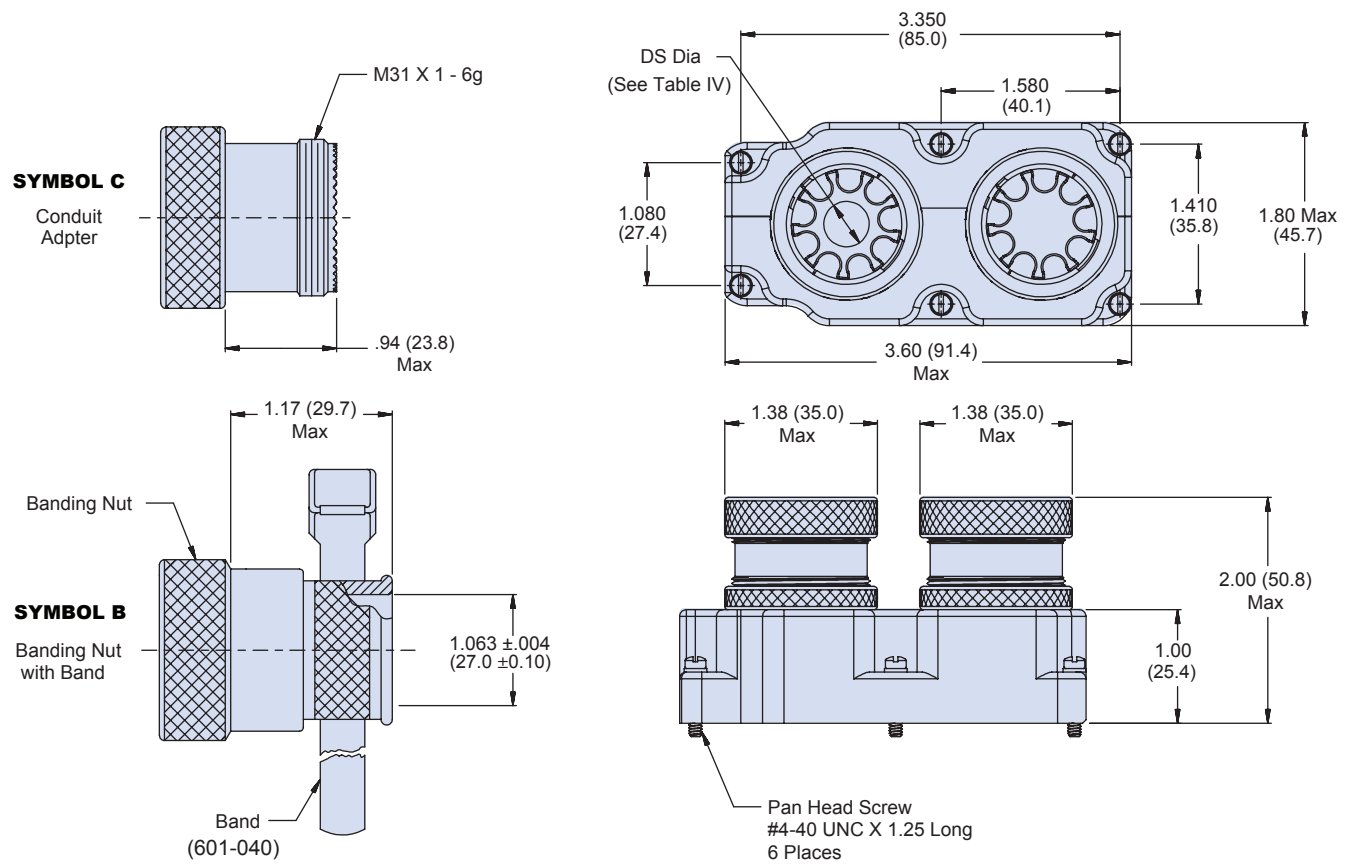
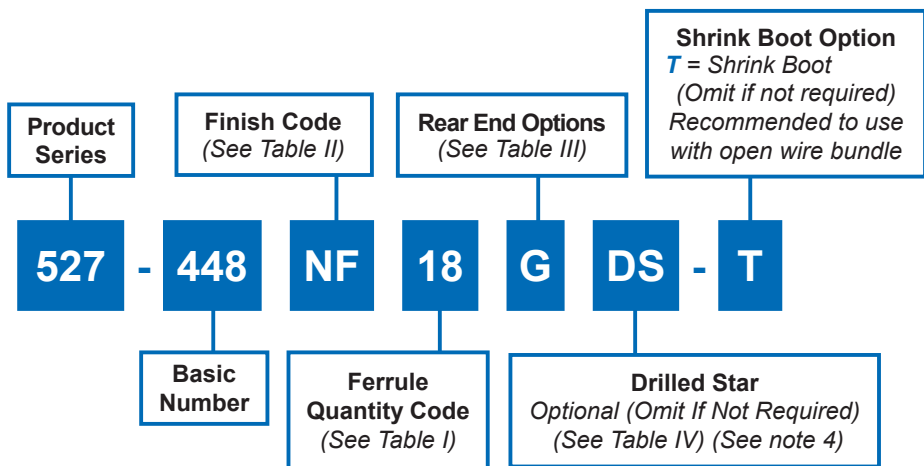


527-448
StarShield™ Non-Environmental
EMI/RFI Backshell Assembly
for size 2 ARINC 600 series connector



StarShield™ non-environmental backshell assembly with rear end options

B



Dimensions in inches (millimeters) and are subject to change without notice.

527-448
**StarShield™ Non-Environmental
 EMI/RFI Backshell Assembly**
 for size 2 ARINC 600 series connector



Table I: Ferrule Quantity						
Cavity	A			B		
Ferrule Quantity Code	0	9	11 ⁵	0	9	11 ⁵
9		x		x		
11			x	x		
18		x			x	
20		x				x
22			x			x

Table II: Material and Finish Options	
Symbol	Material; Finish Description
M	Aluminum; electroless nickel
MT	Aluminum; nickel - PTFE
NF	Aluminum; CAD/O. D. over electroless nickel
ZN	Aluminum; zinc nickel/O. D. over electroless nickel
ZR	Aluminum; zinc nickel/black over electroless nickel (RoHS)
Z1	Stainless steel passivate
ZM	Stainless steel/electroless nickel

Table III: Backend Styles	
Code	Description
B	Banding nut with band
C	Conduit adapter
G	Gland nut

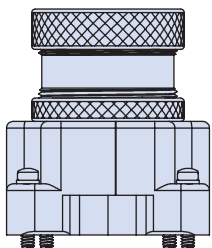
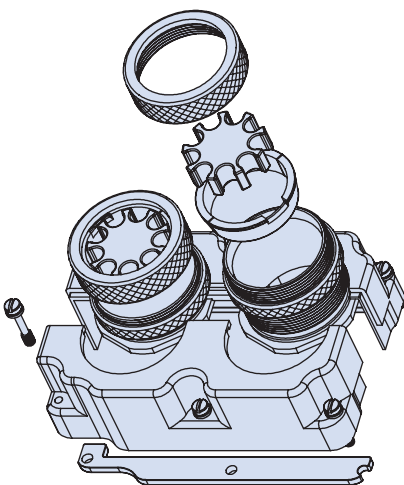


Table IV: Drilled Star Dimensions	
Ferrule Quantity	DS Dia Max (See note 4)
9	.47 (9.9)

Material/Finish:	
Backshell, adapters, nuts, coupling & gland nuts, compression rings, clips, stars	Al alloy/see Table II
Hardware	CRES/passivate

Notes:

1. Assembly identified with manufacturer's name and P/N, space permitting.
2. For effective grounding, connector with conductive finish should be used.
3. Glenair 600 series backshell assembly tools are recommended for assembly and installation.
4. Drilled star option is not available for stars holding 11 ferrules.
5. 11 ferrule star contains a split 8 ferrule star and a 3 ferrule star.
6. Ferrule kit sold separately.
 687-764 ferrule and HST device kit
 687-809 ferrule and sealing device kit
 687-748 solder ferrule
 687-841-01 HST flex device
7. Shrink boot ref. P/N 770-001S108.

Dimensions in inches (millimeters) and are subject to change without notice.