

SPACE-GRADE MICRO-D BACKSHELLS

Product Selection Guide



SOLID SHELL LIGHTWEIGHT ALUMINUM EMI/RFI AND STRAIN-RELIEF BACKSHELLS



500-010

Banding porch platform for shield termination with Band-Master ATS® Standard or Micro bands. Round cable entry. Top, side, 45° or dual 45° entry options.

Page 6



507-142

Banding porch platform for shield termination with Band-Master ATS® Standard or Micro bands. Dual round cable entry.

Page 8



500-012

Qwik-Ty arm for cable strain relief. Round cable entry. Top, Side, or 45° entry options.

Page 9

SOLID SHELL ULTRA LIGHTWEIGHT COMPOSITE EMI/RFI BACKSHELL

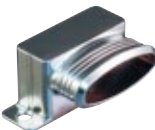


507-088

High-strength, ultra lightweight composite thermoplastic. Electroless Nickel plated for EMI shielding effectiveness. Banding porch platform for shield termination with Band-Master ATS® Micro bands. Round cable entry. Top, Side, or 45° entry options.

Page 10

SOLID SHELL LIGHTWEIGHT ALUMINUM EMI/RFI BACKSHELLS, ELLIPTICAL ENTRY



507-296

Banding porch platform for shield termination with Band-Master ATS® Micro bands. Elliptical cable entry. Top or Side entry options.

Page 12



507-297

Banding porch platform for shield termination with Band-Master ATS® Micro bands. Elliptical cable entry. 45° entry.

Page 14

SPLIT SHELL LIGHTWEIGHT ALUMINUM EMI/RFI BACKSHELL, ELLIPTICAL ENTRY



507-178

Split construction with screwlocks for easy assembly: connectors can be fully mated before hardware is fastened. Banding porch platform for shield termination with Band-Master ATS® bands. Elliptical cable entry.

Page 16

LIGHTWEIGHT ALUMINUM SADDLE-BAR TYPE CABLE CLAMP STRAIN RELIEF BACKSHELLS



507-198

Saddle bar clamp with silicone pads for easy installation of flat cable bundle

Page 18



507-146

Saddle bar clamp for easy installation of round cable bundle

Page 19

OTHER MICRO-D CONNECTOR ACCESSORIES



500-016

Shorting can backshell for protection of stand-alone connectors. Lightweight aluminum with lanyard attachment options.

Page 20



507-035

Potting shell for easy encapsulation of solder-cup wire terminations. Lightweight aluminum.

Page 21



500-107

Lightweight aluminum protective cover for Micro-D plug or receptacle connectors with a variety of lanyard rope attachment options.

Page 22

SPACE-GRADE MICRO-D BACKSHELLS

Product Selection Guide



MICRO-D

Micro-D Backshell Selection Guide																				Page No.	
Part No.	Backshell Type					Cable Entry					Hardware					Other					
	EMI Backshell	Available in Lightweight Composite	Strain Relief Backshell	Porting Shell / Shorting Can	Protective Cover	Round Cable Entry	Elliptical Cable Entry	Top Cable Entry	45° Cable Entry	Side Cable Entry	Slot Head Jackscrews	Hex Head Jackscrews	Extended Jackscrews	Screw Locks	One Piece Backshell	Split (Two Piece) Backshell	Accepts Standard Shield Band	Accepts Micro Shield Band	Connector Attaches with Clip	Connector Attaches with E-Ring	
500-010	●					●	●	●	●	●	●	(1)	●	●	●	●	●				6
507-142	●					●	●	●	●	●	●		●		●	●	●				8
500-012			●			●	●	●	●	●	●	(1)	●				●				9
507-088	●	●				●	●	●	●	●	●	(1)				●	●				10
507-296	●					●	●		●	●	●		●			●			●		12
507-297	●					●		●		●	●	(1)	●		●			●			14
507-178	●					●	●			●	●	●	●	●	●				●		16
507-198			●				●			●	●	●		●			●				18
507-146			●				●			●	●	●		●			(2)	(2)			19
500-016	●			●						●	●	●		●			●				20
507-035				●						●	●	●		●			●				21
500-107					●					●	●	●		●							22

(1) Extended jackscrew will not work with 45° cable entry or with dual 45° entry backshells.
 (2) Sizes 9 thru 69 use e-rings or c-clips for connector attachment, 100 pin uses c-clip only.