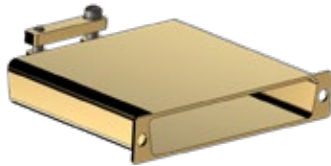


ESCC type for MIL-DTL-24308

D-Subminiature Connectors

Ordering information / ESCC part number cross-reference

BACKSHELL, LIGHTWEIGHT DESIGN WITH SADDLE CLAMPS FOR STRAIN RELIEF IAW ESCC 3401/072, TYPE VARIANTS 05, 06, 07, 08, 09, AND 72



How To Order Glenair 557-433 Commercial Equivalent			
Sample Part Number	557-433	GME	-1 A
ESCC Series	Lightweight strain relief clamp with saddle bars		
Finish Symbol	GME = Gold over Electroless Nickel per ESCC No. 3401/072 Para. 4.4.2		
Shell Size	1=E, 2=A, 3=B, 4=C, 5=D, 6=F		
Alternate Design	A = Alternate design per ESCC Detail Specification 3401/072 Figure 2(b) Omit for standard		

MATERIAL/FINISH NOTES

Backshell: Al Aluminum Alloy with 30 micro-inches Gold (min.) over electroless nickel per ESCC No. 3401/072 Para. 4.4.2

Alternate finish code A174 per ESCC3401/072 available (Glenair Electroless Nickel code ME), consult factory

Hardware: Brass with 0.7µm Gold (min.) over 1µm copper (min.)

For dimensions and weight see ESCC3401/072

ESCC 3401/072 to Glenair P/N cross-reference			
Size	ESCC P/N	Size	Glenair P/N
E	340107205BNMBA	1	557-433GME-1A
A	340107206BNMBA	2	557-433GME-2A
B	340107207BNMBA	3	557-433GME-3A
C	340107208BNMBA	4	557-433GME-4A
D	340107209BNMBA	5	557-433GME-5A
F	340107272BNMBA	6	557-433GME-6

"A" at the end of part number = Alternate design. Omit for standard.
Alternate design not available on size F (6)

SHORTING CAP, LIGHTWEIGHT DESIGN IAW ESCC 3401/072, TYPE VARIANTS 10, 11, 12, 13, 14, AND 73



How To Order Glenair 557-434 Commercial Equivalent			
Sample Part Number	557-434	GME	-2 A
ESCC Series	Lightweight shorting cap		
Finish Symbol	GME = Gold over Electroless Nickel per ESCC No. 3401/072 Para. 4.4.2		
Shell Size	1=E, 2=A, 3=B, 4=C, 5=D, 6=F		
Alternate Design	A = Alternate design per ESCC Detail Specification 3401/072 Figure 2(c) Omit for standard		

MATERIAL/FINISH NOTES

Backshell: Al Aluminum Alloy with 30 micro-inches Gold (min.) over electroless nickel per ESCC No. 3401/072 Para. 4.4.2

Alternate finish code A174 per ESCC3401/072 available (Glenair Electroless Nickel code ME), consult factory

Hardware: Brass with 0.7µm Gold (min.) over 1µm copper (min.)

For dimensions and weight see ESCC3401/072

ESCC 3401/072 to Glenair P/N cross-reference			
Size	ESA P/N	Size	Glenair P/N
E	340107210BNMBA	1	557-434GME-1A
A	340107211BNMBA	2	557-434GME-2A
B	340107212BNMBA	3	557-434GME-3A
C	340107213BNMBA	4	557-434GME-4A
D	340107214BNMBA	5	557-434GME-5A
F	340107273BNMBA	6	557-434GME-6

"A" at the end of part number = Alternate design. Omit for standard.
Alternate design not available on size F (6)

SPACE-GRADE BACKSHELLS FOR ESA APPLICATIONS

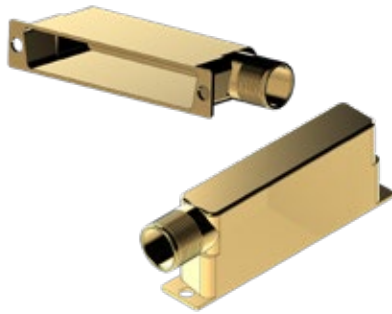
ESCC type for MIL-DTL-24308

D-Subminiature Connectors

Ordering information / ESCC part number cross-reference



EMI/RFI BANDING BACKSHELL, 90° LONGITUDINAL OUTLET, LIGHTWEIGHT DESIGN IAW ESCC 3401/072, TYPE VARIANTS 25, 26, 27, 28, 29, 30, 31, 32, 33, 34, AND 76



How To Order Glenair 557-435 Commercial Equivalent				
Sample Part Number	557-435	GME	-2	L A
ESCC Series	Lightweight EMI/RFI banding backshell			
Finish Symbol	GME = Gold over Electroless Nickel per ESCC No. 3401/072 Para. 4.4.2			
Shell Size	1=E, 2=A, 3=B, 4=C, 5=D, 6=F			
Entry Direction	L = Left outlet R = Right outlet Omit for Shell Size 6			
Alternate Design	A = Alternate design per ESCC Detail Specification 3401/072 Figure 2(e) Omit for standard			

MATERIAL/FINISH NOTES

Backshell: Al Aluminum Alloy with 30 micro-inches Gold (min.) over electroless nickel per ESCC No. 3401/072 Para. 4.4.2

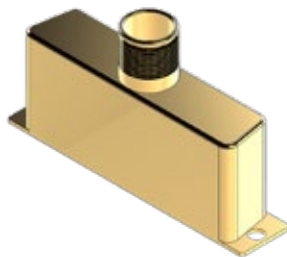
Alternate finish code A174 per ESCC3401/072 available (Glenair Electroless Nickel code ME), consult factory

Hardware: Brass with 0.7µm Gold (min.) over 1µm copper (min.)

For dimensions and weight see ESCC3401/072

ESA/ESCC3401/072 to Glenair P/N cross-reference			
Size	ESA P/N	Size	Glenair P/N
E	340107225BNMBA	1	557-435GME-1RA
	340107230BNMBA		557-435GME-1LA
A	340107226BNMBA	2	557-435GME-2RA
	340107231BNMBA		557-435GME-2LA
B	340107227BNMBA	3	557-435GME-3RA
	340107232BNMBA		557-435GME-3LA
C	340107228BNMBA	4	557-435GME-4RA
	340107233BNMBA		557-435GME-4LA
D	340107229BNMBA	5	557-435GME-5RA
	340107234BNMBA		557-435GME-5LA
F	340107276BNMB	6	557-435GME-6

EMI/RFI BANDING BACKSHELL, STRAIGHT OUTLET, LIGHTWEIGHT DESIGN IAW ESCC 3401/072, TYPE VARIANTS 35, 36, 37, 38, 39 AND 77



How To Order Glenair 557-436 Commercial Equivalent				
Sample Part Number	557-436	GME	-2	A
ESCC Series	Lightweight EMI/RFI banding backshell			
Finish Symbol	GME = Gold over Electroless Nickel per ESCC No. 3401/072 Para. 4.4.2			
Shell Size	1=E, 2=A, 3=B, 4=C, 5=D, 6=F			
Alternate Design	A = Alternate design per ESCC Detail Specification 3401/072 Figure 2(f) Omit for standard			

MATERIAL/FINISH NOTES

Backshell: Al Aluminum Alloy with 30 micro-inches Gold (min.) over electroless nickel per ESCC No. 3401/072 Para. 4.4.2

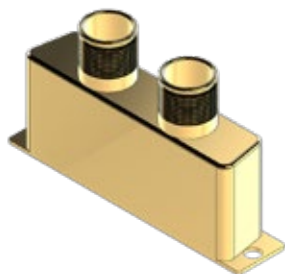
Alternate finish code A174 per ESCC3401/072 available (Glenair Electroless Nickel code ME), consult factory

Hardware: Brass with 0.7µm Gold (min.) over 1µm copper (min.)

For dimensions and weight see ESCC3401/072

ESCC 3401/072 to Glenair P/N cross-reference			
Size	ESA P/N	Size	Glenair P/N
E	340107235BNMBA	1	557-436GME-1A
A	340107236BNMBA	2	557-436GME-2A
B	340107237BNMBA	3	557-436GME-3A
C	340107238BNMBA	4	557-436GME-4A
D	340107239BNMBA	5	557-436GME-5A
F	340107277BNMB	6	557-436GME-6

"A" at the end of part number = Alternate design. Omit for standard.
Alternate design not available on size F (6)

**EMI/RFI BANDING BACKSHELL, DUAL ENTRY, LIGHTWEIGHT DESIGN
IAW ESCC 3401/072, 40 TYPE VARIANT**

MATERIAL/FINISH NOTES

Backshell: Al Aluminum Alloy with 30 micro-inches Gold (min.) over electroless nickel per ESCC No. 3401/072 Para. 4.4.2

Alternate finish code A174 per ESCC3401/072 available (Glenair Electroless Nickel code ME), consult factory

Hardware: Brass with 0.7µm Gold (min.) over 1µm copper (min.)

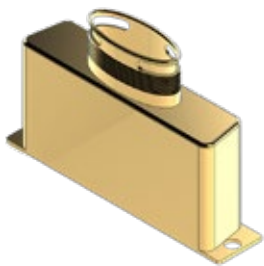
For dimensions and weight see ESCC3401/072 Figure 2(g)

How To Order Glenair 557-437 Commercial Equivalent

Sample Part Number	557-437	GME	-2
ESCC Series	Lightweight EMI/RFI banding backshell, dual entry		
Finish Symbol	GME = Gold over Electroless Nickel per ESCC No. 3401/072 Para. 4.4.2		
Shell Size	2=A		

ESCC 3401/072 to Glenair P/N cross-reference

Size	ESCC P/N	Size	Glenair P/N
A	340107240BNMB	2	557-437GME-2

**EMI/RFI BANDING BACKSHELL, ULTRA ELLIPTICAL STRAIGHT ENTRY
IAW ESCC3401/072, TYPE VARIANTS 46, 47, 48, 49, 50, AND 78**

MATERIAL/FINISH NOTES

Backshell: Al Aluminum Alloy with 30 micro-inches Gold (min.) over electroless nickel per ESCC No. 3401/072 Para. 4.4.2

Alternate finish code A174 per ESCC3401/072 available (Glenair Electroless Nickel code ME), consult factory

Hardware: Brass with 0.7µm Gold (min.) over 1µm copper (min.)

For dimensions and weight see ESCC3401/072

How To Order Glenair 557-438 Commercial Equivalent

Sample Part Number	557-438	GME	-1	A
ESCC Series	Lightweight EMI/RFI banding backshell			
Finish Symbol	GME = Gold over Electroless Nickel per ESCC No. 3401/072 Para. 4.4.2			
Shell Size	1=E, 2=A, 3=B, 4=C, 5=D, 6=F			
Alternate Design	A = Alternate design per ESCC Detail Specification 3401/072 Figure 2(i) Omit for standard			

ESCC 3401/072 to Glenair P/N cross-reference

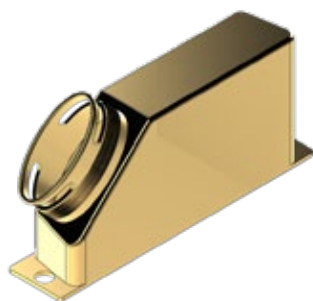
Size	ESA P/N	Size	Glenair P/N
E	340107246BNMBA	1	557-438GME-1A
A	340107247BNMBA	2	557-438GME-2A
B	340107248BNMBA	3	557-438GME-3A
C	340107249BNMBA	4	557-438GME-4A
D	340107250BNMBA	5	557-438GME-5A
F	340107278BNMB	6	557-438GME-6

"A" at the end of part number = Alternate design. Omit for standard.

Alternate design not available on size F (6)



EMI/RFI BANDING BACKSHELL, ULTRA ELLIPTICAL 45° ENTRY
IAW ESCC3401/072, TYPE VARIANTS 51, 52, 53, 54, 55, 56, 57, 58, 59, 60, AND 79



How To Order Glenair 557-439 Commercial Equivalent					
Sample Part Number	557-439	GME	-2	R	A
ESCC Series	Lightweight EMI/RFI banding backshell				
Finish Symbol	GME = Gold over Electroless Nickel per ESCC No. 3401/072 Para. 4.4.2				
Shell Size	1=E, 2=A, 3=B, 4=C, 5=D, 6=F				
Entry Direction	L = Left outlet R = Right outlet Omit for Shell Size 6				
Alternate Design	A = Alternate design per ESCC Detail Specification 3401/072 Figure 2(j) Omit for standard				

ESA/ESCC3401/072 to Glenair P/N cross-reference			
Size	ESA P/N	Size	Glenair P/N
E	340107251BNMBA	1	557-439GME-1RA
	340107256BNMBA		557-439GME-1LA
A	340107252BNMBA	2	557-439GME-2RA
	340107257BNMBA		557-439GME-2LA
B	340107253BNMBA	3	557-439GME-3RA
	340107258BNMBA		557-439GME-3LA
C	340107254BNMBA	4	557-439GME-4RA
	340107259BNMBA		557-439GME-4LA
D	340107255BNMBA	5	557-439GME-5RA
	340107260BNMBA		557-439GME-5LA
F	340107279BNMB	6	557-439GME-6

MATERIAL/FINISH NOTES

Backshell: Al Aluminum Alloy with 30 micro-inches Gold (min.) over electroless nickel per ESCC No. 3401/072 Para. 4.4.2

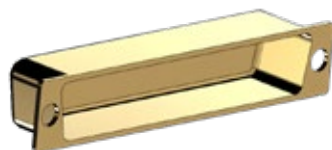
Alternate finish code A174 per ESCC3401/072 available (Glenair Electroless Nickel code ME), consult factory

Hardware: Brass with 0.7µm Gold (min.) over 1µm copper (min.)

For dimensions and weight see ESCC3401/072

"A" at the end of part number = Alternate design. Omit for standard.
 Alternate design not available on size F (6)

EXTRA SHORTING CAN, LIGHTWEIGHT DESIGN
IAW ESCC3401/072, TYPE VARIANTS 61, 62, 63, 64, 65, AND 80



How To Order Glenair 557-440 Commercial Equivalent					
Sample Part Number	557-440	GME	-2	A	
ESCC Series	Lightweight extra shorting can				
Finish Symbol	GME = Gold over Electroless Nickel per ESCC No. 3401/072 Para. 4.4.2				
Shell Size	1=E, 2=A, 3=B, 4=C, 5=D, 6=F				
Alternate Design	A = Alternate design per ESCC Detail Specification 3401/072 Figure 2(k) Omit for standard				

ESA/ESCC3401/072 to Glenair P/N cross-reference			
Size	ESA P/N	Size	Glenair P/N
E	340107261BNMBA	1	557-440GME-1A
A	340107262BNMBA	2	557-440GME-2A
B	340107263BNMBA	3	557-440GME-3A
C	340107264BNMBA	4	557-440GME-4A
D	340107265BNMBA	5	557-440GME-5A
F	340107280BNMB	6	557-440GME-6

MATERIAL/FINISH NOTES

Backshell: Al Aluminum Alloy with 30 micro-inches Gold (min.) over electroless nickel per ESCC No. 3401/072 Para. 4.4.2

Alternate finish code A174 per ESCC3401/072 available (Glenair Electroless Nickel code ME), consult factory

Hardware: Brass with 0.7µm Gold (min.) over 1µm copper (min.)

For dimensions and weight see ESCC3401/072

"A" at the end of part number = Alternate design. Omit for standard.
 Alternate design not available on size F (6)

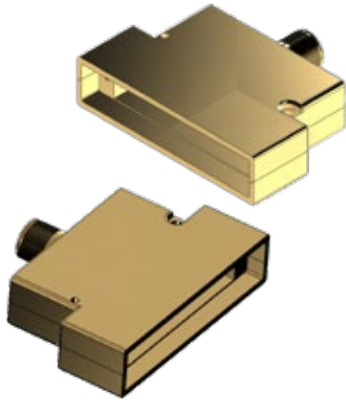
ESCC type for MIL-DTL-24308

D-Subminiature Connectors

Ordering information / ESCC part number cross-reference



**EMI/RFI BANDING BACKSHELL, STRAIGHT OUTLET, FRONT OR REAR MOUNT, LIGHTWEIGHT DESIGN
IAW ESCC 3401/072, TYPE VARIANTS 15, 16, 17, 18, 19, 20, 21, 22, 23, 24, 74, AND 75**



MATERIAL/FINISH NOTES

Backshell: Al Aluminum Alloy with 30 micro-inches Gold (min.) over electroless nickel per ESCC No. 3401/072 Para. 4.4.2
 Alternate finish code A174 per ESCC3401/072 available (Glenair Electroless Nickel code ME), consult factory
 Hardware: Brass with 0.7µm Gold (min.) over 1µm copper (min.)
 For dimensions and weight see ESCC3401/072

How To Order Glenair 550T072 Commercial Equivalent					
Sample Part Number	550T072	GME	-2	F	-A
ESCC Series	Lightweight EMI/RFI banding backshell				
Finish Symbol	GME = Gold over Electroless Nickel per ESCC No. 3401/072 Para. 4.4.2				
Shell Size	1=E, 2=A, 3=B, 4=C, 5=D, 6=F				
Receptacle Mounting	F = Front mount R1 = Rear mount				
Alternate Design	A = Alternate design per ESCC Detail Specification 3401/072 Figure 2(d) Omit for standard				

ESCC 3401/072 to Glenair P/N cross-reference			
Size	ESA P/N	Size	Glenair P/N
E	340107215BNMBA	1	550T072GME-1F-A
	340107220BNMBA		550T072GME-1R1-A
A	340107216BNMBA	2	550T072GME-2F-A
	340107221BNMBA		550T072GME-2R1-A
B	340107217BNMBA	3	550T072GME-3F-A
	340107222BNMBA		550T072GME-3R1-A
C	340107218BNMBA	4	550T072GME-4F-A
	340107223BNMBA		550T072GME-4R1-A
D	340107219BNMBA	5	550T072GME-5F-A
	340107224BNMBA		550T072GME-5R1-A
F	340107274BNMB	6	550T072GME-6F
	340107275BNMB		550T072GME-6R1

"A" at the end of part number = Alternate design. Omit for standard.
 Alternate design not available on size F (6)



BACKSHELL HARDWARE - MALE SCREW LOCK ASSEMBLIES
IAW ESCC 3401/072, TYPE VARIANTS 70, 71

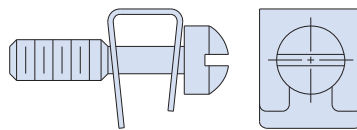
How To Order Glenair 6870-1124 Commercial Equivalent		
Sample Part Number	6870-1124	M
ESCC Series	Male screw lock assembly	
Jackscrew Style	E = Stainless Steel, Slotted Head M = Brass, Hex Socket Head	

MATERIAL/FINISH NOTES

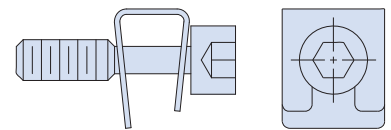
Jackscrews and Bracket: Stainless Steel or Brass with 30 micro-inches Gold (min.) over copper 40 micro-inches (min) per ESCC No. 3401/072 Para. 4.4.1

For dimensions and weight see ESCC3401/072

ESCC 3401/072 to Glenair P/N cross-reference	
ESCC P/N	Glenair P/N
340107270	6870-1124E
340107271	6870-1124M



SLOTTED HEAD
STYLE E



SOCKET HEAD SCREW
STYLE M

D-SUBMINIATURE

BACKSHELL HARDWARE - MALE SCREW LOCK ASSEMBLIES
IAW ESCC 3401/072, TYPE VARIANTS 01, 02, 03, 04, 66, 67, 68, AND 69

How To Order Glenair 6870-1129 Commercial Equivalent		
Sample Part Number	6870-1129	-01
ESCC Series	Male screw lock assembly	
Variant	See cross-ref table	

MATERIAL/FINISH NOTES

Jackscrews and Bracket: Brass with 30 micro-inches Gold (min.) over copper 40 micro-inches (min) per ESCC No. 3401/072 Para. 4.4.1

For dimensions and weight see ESCC3401/072

ESCC 3401/072 to Glenair P/N cross-reference			
ESCC P/N	Glenair P/N	Material	Use with Shell Size
340107201	6870-1129-01	Brass	DA to DC
340107202	6870-1129-02	Brass	DD
340107266	6870-1129-66	Brass	DA to DC
340107267	6870-1129-67	Brass	DD

