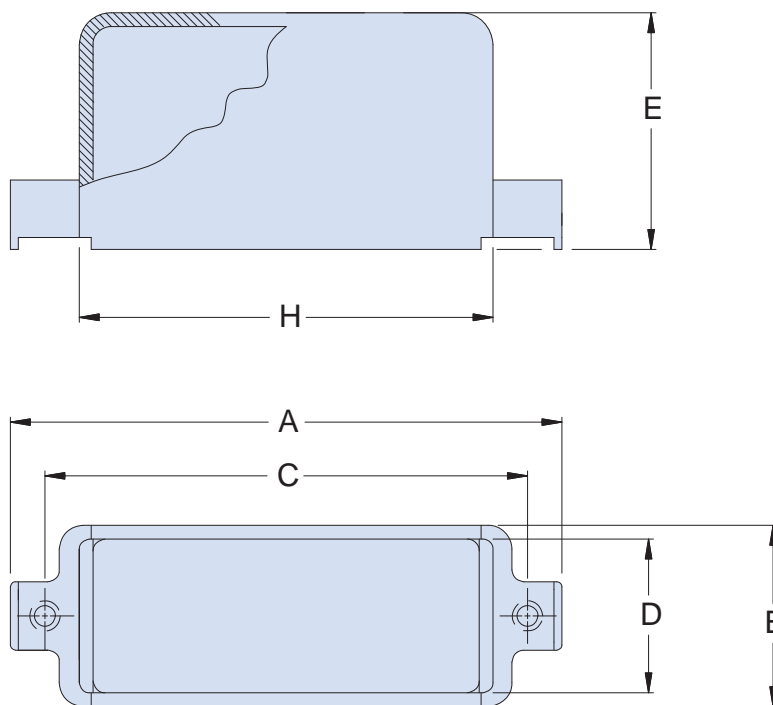
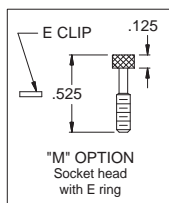
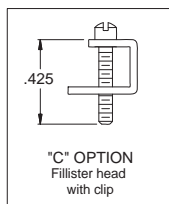
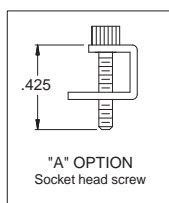


# Shorting Can

## 557T316



How To Order	
Sample Part Number	557T316 M 2 00
Series	557T316 = Top entry
Finish Symbol	M = Electroless Nickel Z2 = Gold Plate
Shell Size	1, 2, 3, 4, 5, 6 (Table I)
Shorting Can	00
Jackscrew Option	A, C, M (see diagrams) H = Hole



D-SUBMINIATURE

Table I: Shell Size						
Shell Size	A Max	B ±.020 (.51)	C ±.005 (.13)	D Ref	E Max	H Ref
1*	1.25 (31.75)	.520 (13.21)	.984 (24.99)	.440 (11.18)	.695 (17.65)	.856 (21.74)
2	1.58 (40.13)	.520 (13.21)	1.312 (33.32)	.440 (11.18)	.695 (17.65)	1.186 (30.12)
3	2.13 (54.10)	.520 (13.21)	1.852 (47.04)	.440 (11.18)	.945 (24.00)	1.727 (43.87)
4	2.77 (70.36)	.520 (13.21)	2.500 (63.50)	.440 (11.18)	.945 (24.00)	2.383 (60.53)
5	2.68 (68.07)	.629 (15.98)	2.406 (61.11)	.549 (13.94)	1.135 (28.83)	2.287 (58.09)
6	2.77 (70.36)	.690 (17.53)	2.500 (63.50)	.610 (15.49)	1.265 (32.13)	2.405 (61.09)

### MATERIALS

Backshell: Aluminum alloy

Hardware: CRES / passivated