

SPACE-GRADE MIL-DTL-24308 D-SUB BACKSHELLS

EMI/RFI Backshell

with Dual Band Porch Cable Entries

Solid shell, dual top cable entry - 557-080



How To Order				
Sample Part Number	557-080	M	2	P B
Series	Dual entry backshell			
Finish Symbol	M = Electroless Nickel			
Shell Size	1, 2, 3, 4, 5, 6 (Table I)			
Jackscrew Option	Omit for jackscrews P = Female Jackposts			
Band Option	B = Band supplied (600-052) K = Coiled Band supplied (600-052-1) Omit for none			

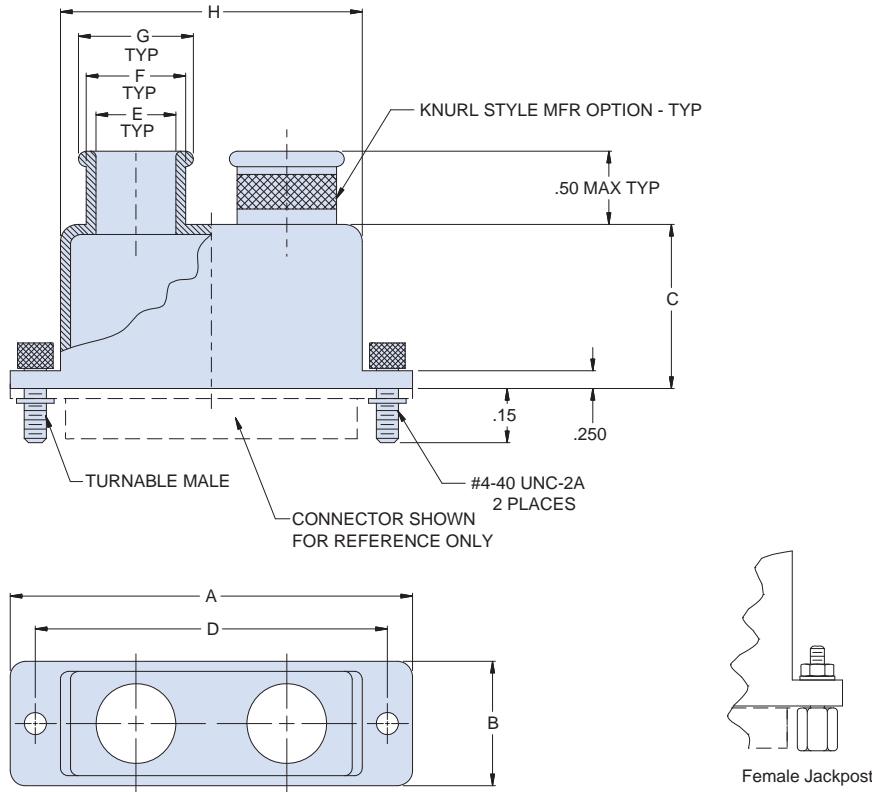


Table I: Shell Size								
Shell Size	A Max	B	C	D ±.005 (.13)	E	F	G	H
1	1.25 (31.75)	.53 (13.46)	.75 (19.05)	.984 (24.99)	.125 (3.18)	.250 (6.35)	.312 (7.92)	.76 (19.30)
2	1.58 (40.13)	.53 (13.46)	.75 (19.05)	1.312 (33.32)	.250 (6.35)	.375 (9.52)	.437 (11.10)	1.09 (27.69)
3	2.13 (54.10)	.53 (13.46)	1.00 (25.40)	1.852 (47.04)	.250 (6.35)	.375 (9.52)	.437 (11.10)	1.63 (41.40)
4	2.77 (70.36)	.53 (13.46)	1.00 (25.40)	2.500 (63.50)	.250 (6.35)	.375 (9.52)	.437 (11.10)	2.28 (57.91)
5	2.68 (68.07)	.66 (16.76)	1.25 (31.75)	2.406 (61.11)	.375 (9.52)	.500 (12.70)	.562 (14.27)	2.18 (55.37)
6	2.77 (70.36)	.73 (18.54)	1.25 (31.75)	2.500 (63.50)	.500 (12.70)	.625 (15.88)	.688 (17.48)	2.28 (57.91)

MATERIALS

Backshell: Aluminum alloy
 Jackscrew, Bracket, and E-Ring: CRES/Passivated