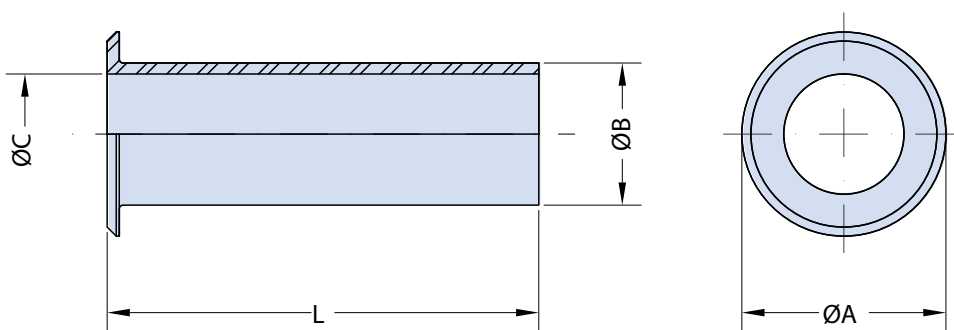


IT 3420-XX (Class A) and IT 3420-XXA (Class C) Neoprene Sleeve for Protection & Reduction used with Class A or C Cable Clamps

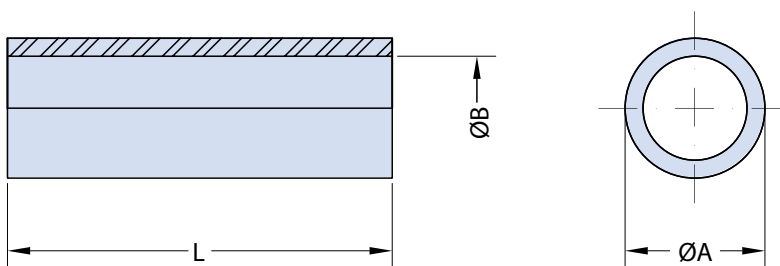
Basic Part Number and Shell Size
Designator (Table I)

IT

3420-XX



IT3420-XX Neoprene Sleeve used with Class A Cable Clamps



IT3420-XXA Neoprene Sleeve used with Class C Cable Clamps

Application Notes

1. IT3420-XX: Neoprene bushing for protection and reduction, used with class A cable clamps.
2. IT3420-XXA: Neoprene bushing for protection and reduction, used with class C cable clamps.

**IT 3420-XX (Class A) and IT 3420-XXA (Class C)
Neoprene Sleeve for Protection & Reduction
used with Class A or C Cable Clamps**



TABLE I: IT3420-XX NEOPRENE SLEEVE PART NUMBERS & DIMENSIONS

Part Number	ØA	ØB	ØC	L
IT 3420 - 4	12.8	7.7	5.6	69.9
IT 3420 - 6	15.7	10.8	7.9	66.7
IT 3420 - 8	18.9	14.0	11.1	63.5
IT 3420 - 10	22.6	15.6	14.3	60.3
IT 3420 - 12	27.5	18.8	15.9	57.2
IT 3420 - 16	33.4	23.5	19.1	54.0
IT 3420 - 20	40.6	31.5	23.8	50.8
IT 3420 - 24	46.9	34.7	31.8	47.6
IT 3420 - 28	53.0	41.0	34.9	44.5

TABLE II: IT3420-XXA NEOPRENE PART NUMBERS & SLEEVE DIMENSIONS

Part Number	ØA	ØB	L ±0.8
IT 3420 - 4A	7.7	5.6	50.8
IT 3420 - 6A	10.8	7.9	50.8
IT 3420 - 8A	13.5	11.1	50.8
IT 3420 - 10A	15.6	11.1	50.8
IT 3420 - 12A	18.8	13.7	50.8
IT 3420 - 16A	23.5	19.1	50.8
IT 3420 - 18A	28.3	23.8	50.8
IT 3420 - 20A	31.5	23.8	50.8
IT 3420 - 24A	34.7	28.6	50.8
IT 3420 - 28A	41.0	31.8	50.8