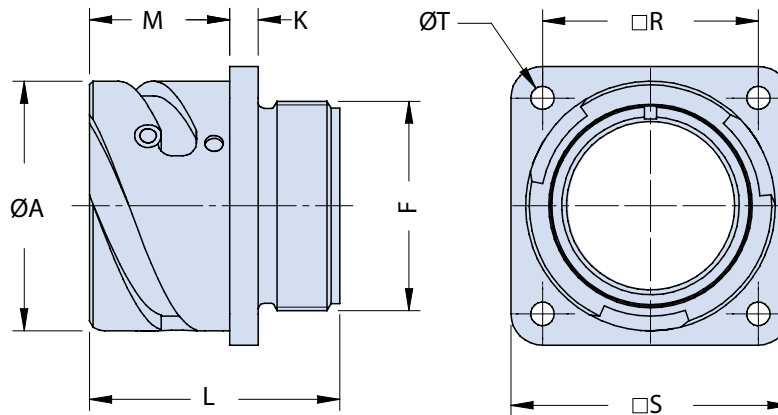
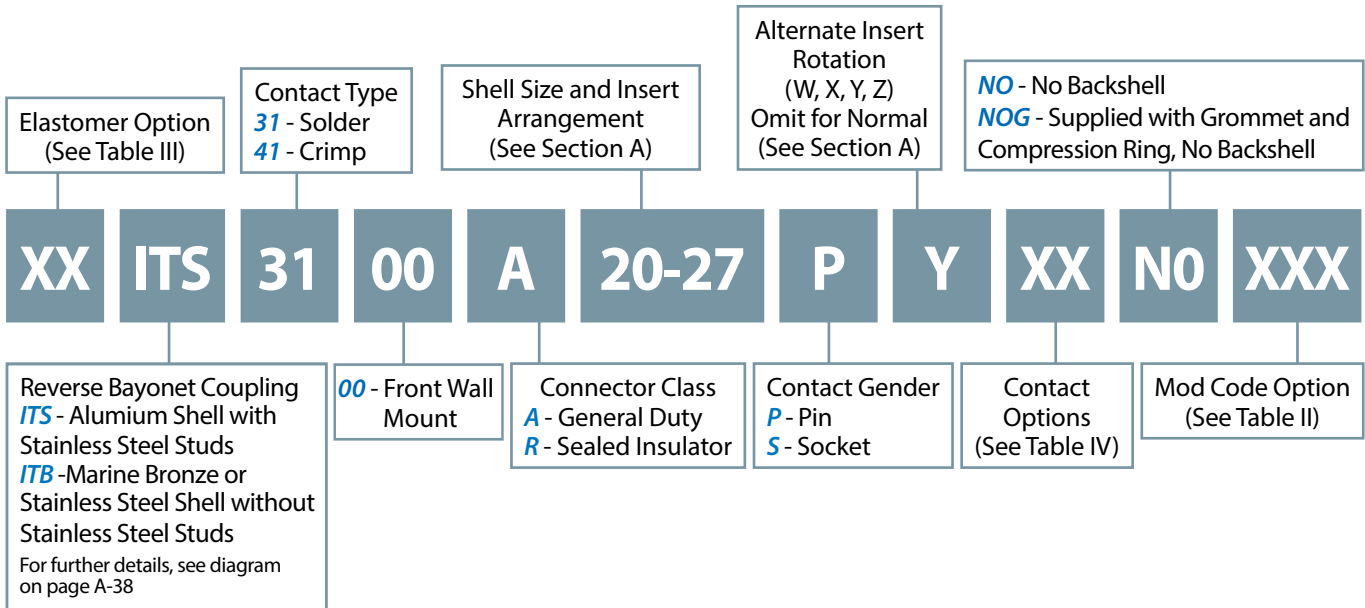


## ITS 3100 A NO and ITS 4100 A NO Front Panel Mount Square Flange Receptacle with Accessory Mounting Threads



### Application Notes

1. Front panel mount square flange receptacle assembly with rear threads for attachment of various backend connector accessories. Through mounting holes.
2. Connector Class "A" (general duty). Connector Class "R" (environmental): sealed insulator only with solder contacts.
3. Standard materials configuration consists of aluminum alloy. For platings, see TABLE II finish options.
4. Standard contact material consists of copper alloy with silver plating or gold plating.
5. A broad range of other front and rear connector accessories are available.  
See our website and/or contact the factory for complete information.

**ITS 3100 A N0 and ITS 4100 A N0  
Front Panel Mount Square Flange Receptacle  
with Accessory Mounting Threads**



**TABLE I: DIMENSIONS**

Shell Size	ØA +0.2 -0.1	K ±0.2	L Max.	M +0.4 -0	R ±0.2	S ±0.2	ØT +0.1 -0	F Thread
<b>10 SL</b>	18.2	2.8	24.7	14.2	18.25	25.4	3.2	0.6250 - 24UNEF
<b>14 S</b>	24.5	3.2	24.9	14.2	23.00	30.4	3.2	0.7500 - 20UNEF
<b>16 S</b>	27.2	3.2	24.9	14.2	24.60	32.5	3.2	0.8750 - 20UNEF
<b>16</b>	27.2	3.2	33.9	19.0	24.60	32.5	3.2	0.8750 - 20UNEF
<b>18</b>	30.7	4.0	34.3	19.0	27.00	35.0	3.2	1.0000 - 20UNEF
<b>20</b>	34.0	4.0	34.3	19.0	29.40	38.0	3.2	1.1250 - 18UNEF
<b>22</b>	37.3	4.0	34.3	19.0	31.75	41.0	3.2	1.2500 - 18UNEF
<b>24</b>	40.9	4.0	35.8	20.6	34.90	44.5	3.7	1.3750 - 18UNEF
<b>28</b>	46.7	4.0	35.8	20.6	39.70	50.9	3.7	1.6250 - 18UNEF
<b>32</b>	53.4	4.0	37.4	22.2	44.50	57.0	4.3	1.8750 - 16UN
<b>36</b>	59.6	4.0	37.4	22.2	49.20	63.5	4.3	2.0625 - 16UNS
<b>40</b>	65.5	4.0	37.4	22.2	55.55	69.9	4.3	2.3125 - 16UNS

**B**

**TABLE II: MODIFICATION CODES**

STANDARD MATERIAL AND FINISH (*)		
Sym	Description	RoHS
	Omit for Aluminum/ Cadmium Olive Drab	
F6	Aluminum/ Black Electrodeposited Paint	✓
F7	Aluminum/ Black Zinc Nickel	✓
F11	Aluminum/ Electroless Nickel	✓
MB	Marine Bronze/ Unplated	✓
FK	Stainless Steel/ Passivate	✓

(\*) For further options, please contact the factory.

**TABLE III**

ELASTOMER OPTIONS	
Sym	Description
	Omit for Polychloroprene Elastomer
FR	Fire Resistant Elastomer
S	Silicone Elastomer

**TABLE IV: MODIFICATION CODES**

CONTACT OPTIONS	
Sym	Description
B0	Connector without Contacts**
B1	Connector with Gold Plated Contacts
<b>Omit for standard version (Silver plated)</b>	

(\*\*) Crimp Contacts Only