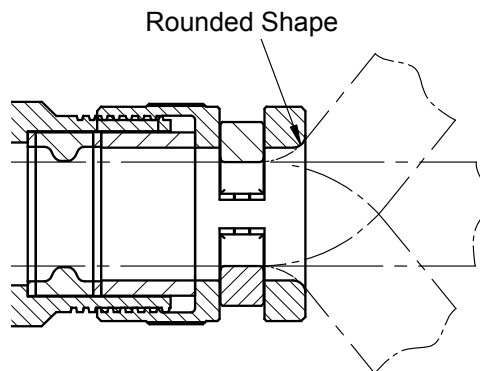
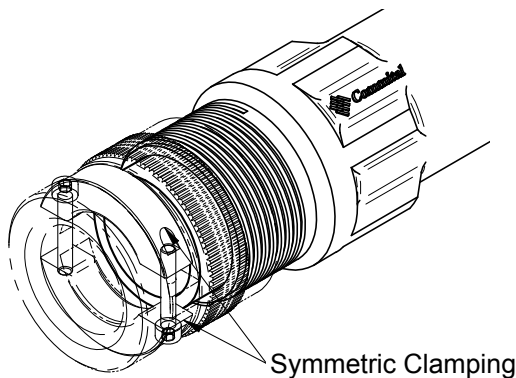


CLAMP DETAILS



The symmetric clamping system keeps the cable firmly locked and in axis with cables. The rounded shape on the clamping system and on the termination, allow to avoid cable's insulator damaging in the clamping zone and in the rear end despite casual movements.

UJ1 AND UJ2 SUPPORTS : 2-WAY AND 3-WAY

2 Way Supports:

UJ1 - 2-Way Support P/N
UJ1-S-2

UJ 2 - 2-Way Support
UJ2-S-2



3-Way Supports:

UJ1 - 3-Way Support P/N
UJ1-S-3

UJ 2 - 3-Way Support
UJ2-S-3



DIMENSION TABLE

Support P/N	Description	Number of Positions	A (mm)	B (mm)	C (mm)	D (mm)	E (mm)
UJ1-S-2	Suitable for UJ1	2	160	84	190	50	60
UJ2-S-2	Suitable for UJ2	2	140	72	170	40	60
UJ1-S-3	Suitable for UJ1	3	216	70	246	50	60
UJ2-S-3	Suitable for UJ2	3	186	59	216	40	50