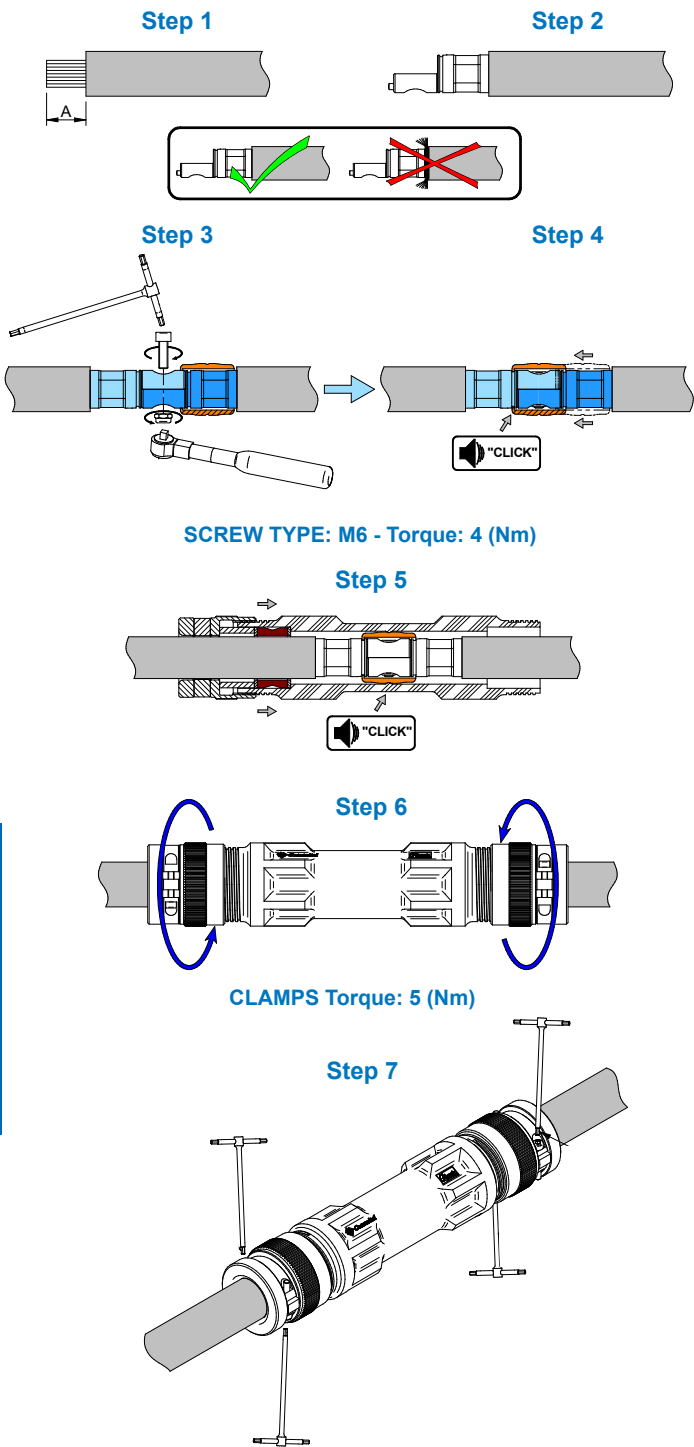


CRIMPING INSTRUCTIONS AND TOOLS

CRIMPING STEPS



SCREW TYPE: M6 - Torque: 4 (Nm)

CLAMPS Torque: 5 (Nm)

- CROSS BAR SCREW TYPE: M4 - Torque: 4 to 6 Max. (Nm)
- ELECTRICAL TEST: 5000 MΩ - 3500 Vcc (1 Min.)

TABLE 1 - UJ1 Contacts

CONTACT P/N	A (+0.5/0) (mm)	DIE	CRIMP TOOL	TENSILE STRENGTH (N)
C122	23	M.112016	M.105013	2800
C145				3700
C154		M.112012		4800
C192		M.112018		
C213	28			

TABLE 2 - UJ2 Contacts

CONTACT P/N	A (+0.5/0) (mm)	DIE	CRIMP TOOL	TENSILE STRENGTH (N)
C050	12	M.112005	M.112004	890
C062		M.112006		1200
C090	14	M.112010		2200
C107				2800

CRIMP TOOLS



Oleodynamic Crimp Tool



Die for Oleodynamic Crimp Tool

For further Crimping Steps details, please contact the factory.

D