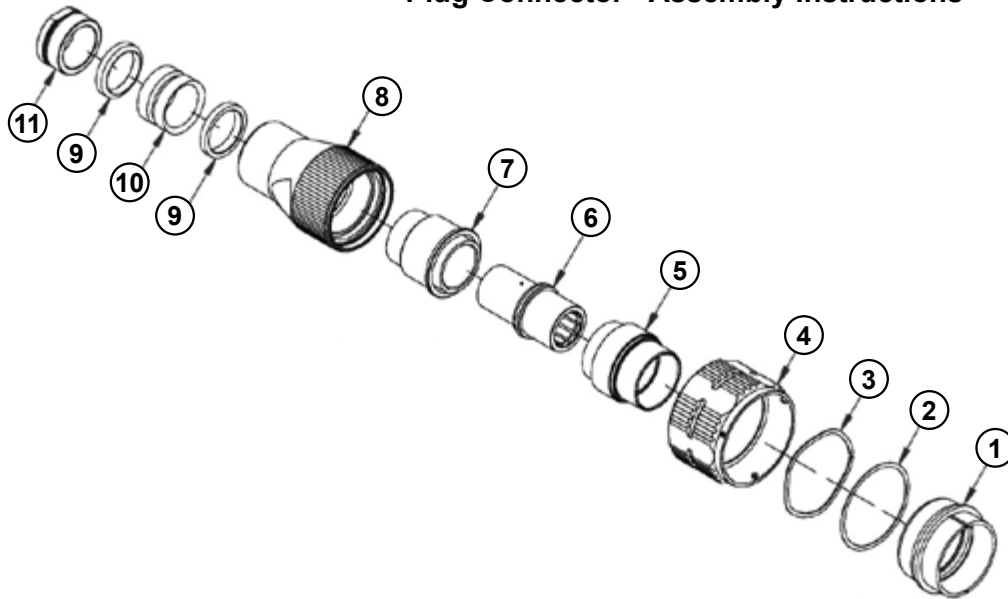


ITS 500 Series Reverse Bayonet Single Pole Power Connector Assembly Instructions



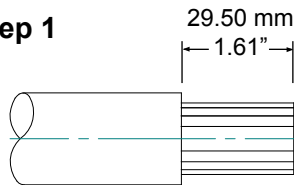
Plug Connector - Assembly Instructions



Items Description

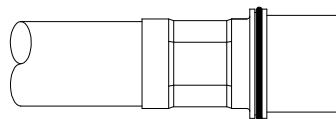
- 1 - Plugshell
- 2 - Flat Washer
- 3 - Wave Spring
- 4 - Coupling Nut
- 5 - Front Insert
- 6 - Female Contact
- 7 - Rear Insert
- 8 - Backshell
- 9 - Compression Ring
- 10 - Grommet
- 11 - Backnut

Step 1

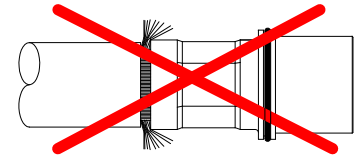


Cut and strip the cable

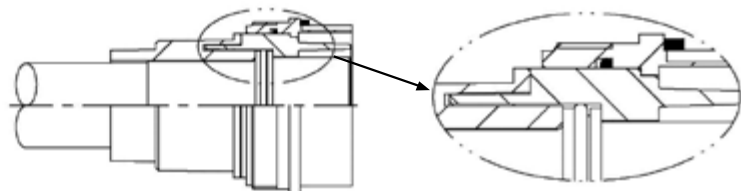
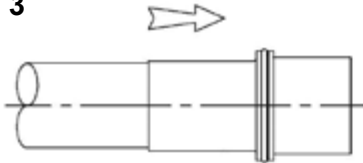
Step 2



Crimp the contact (6) on the wire.

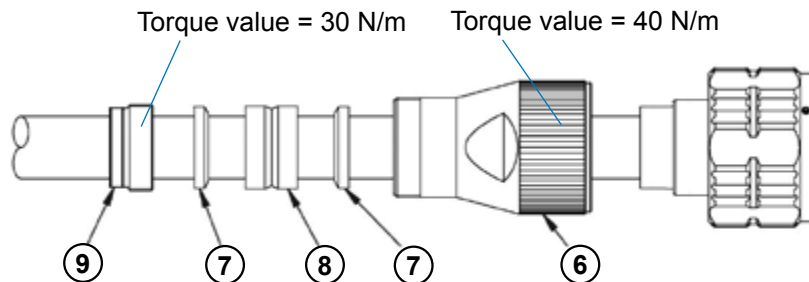


Step 3



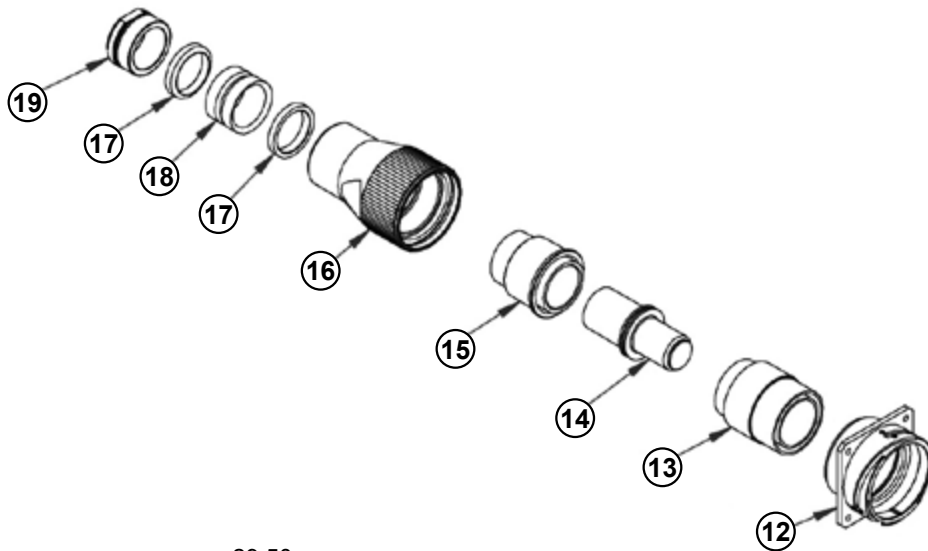
Insert the contact (6) crimped to the wire into the front insert (5). Install the rear insert (7) until it stops against the front insert (5) and check that the insert is assembled correctly per the picture above.

Step 4



Assemble the wave spring (3) and flat washer (2) into the coupling nut (4) and slide down over the plugshell (1). Screw the backshell (8) onto the rear external threads of the plugshell (1) and tighten. Make sure that the angle side of compression ring (7) are facing into the grommet. Then screw the backshell and tighten.
Electrical Test: Insulation resistance (5000 MΩ Min.). Test voltage: 3000 Vcc (1 min.).

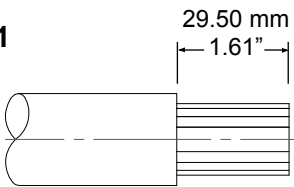
Receptacle Connector - Assembly Instructions



Items Description

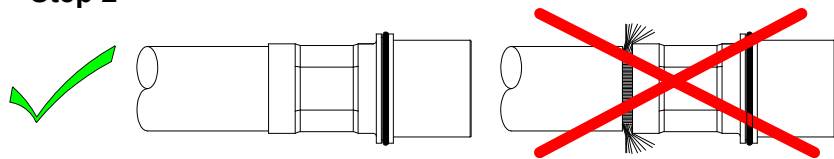
- 12 - Receptacle
- 13 - Front Insert
- 14 - Male Contact
- 15 - Rear Insert
- 16 - Backshell
- 17 - Compression Ring
- 18 - Grommet
- 19 - Backnut

Step 1



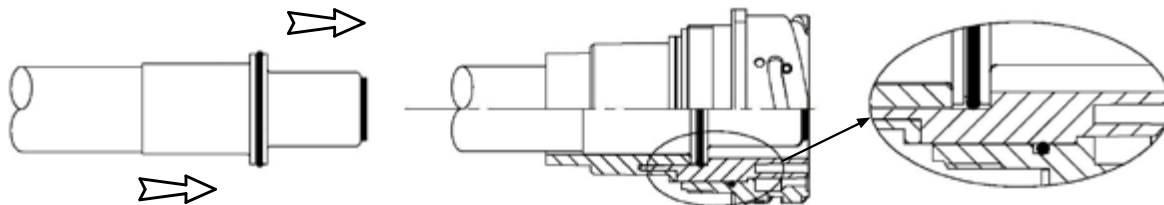
Cut and strip the cable

Step 2



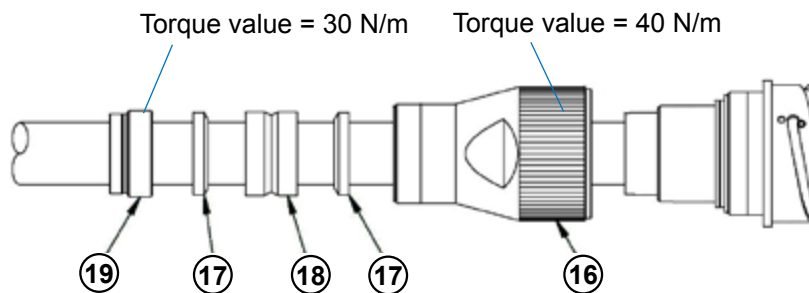
Crimp the contact (14) on the conductor.

Step 3



Insert the contact (14) crimped to the wire into the front insert (13). Install the rear insert (15) until it stops against the front insert (13) and check that the insert is assembled correctly per the picture above.

Step 4



Screw the backshell (16) onto the rear external threads of the receptacle (12) and tighten. Make sure that the angled side of the compression rings (17) are facing into the grommet (18). Then screw the backnut (19).

Electrical Test: Insulation resistance (5000 MΩ Min.). Test voltage: 3000 Vcc (1 min.).