

SERIES

79

SEVENTY-NINE

The widest range of
mission-critical interconnect
technologies in the world



Series 79
Connectors and Accessories

Rectangular Connector Series Summary

HiPer-D



Glenair Sr. 28

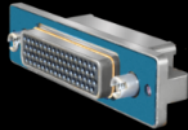
M24308

5 - 40 AMPs

31 Layouts

9-104 Ways

Series 79



Glenair Sr. 79

N/A

5-23 AMP

33 Layouts

2-102 Ways

Micro-D



Glenair Sr. 17

M83513

3 AMP

8 Layouts

9-100 Ways

AlphaLink



Glenair Sr. 171

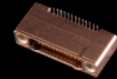
N/A

2 AMP

12 Layouts

4-40 Ways

Nano



Glenair Sr. 89

M32139

1 AMP

7 Layouts

9-85 Ways

Series 79 Connectors and Cables

The Micro-D Connector with Crimp Contacts: Power, Signal and RF

- Incorporates crimp contact technology into an innovative, precision-machined, high-density, module-to-chassis connector package



Outstanding Performance

Why Users Love the Series 79

SERIES

79

SEVENTY-NINE

- High-density, crimp-contact Micro-D
- Advanced EMI shielding and sealing compared to standard D-sub
- Cable, panel-mount and PCB versions
- Snap-in size #23 crimp contacts
- Snap-in Size #12 and #16 power and/or coax contacts in hybrid layouts.
- Easy integration into high-reliability cable assemblies (no splicing or soldering)
- Guide pin versions (for blind mating).



Series 79 Supported Crimp Contacts

SERIES

79

SEVENTY-NINE

The main difference compared to standard Micro-D's

- Snap-in size #23 crimp contacts on .075 inch (1.9 mm) spacing
- 5 amp current capacity
- Snap-in size #12 and #16 power contacts in hybrid layouts
- 13 and 23 amp current capacity
- Snap-in size #12 and #16 coaxial contacts
- 50 Ohm matched impedance versions
- PCB versions with non-removable contacts (Size #23, #16 and #12)



Series 79 Connector Styles

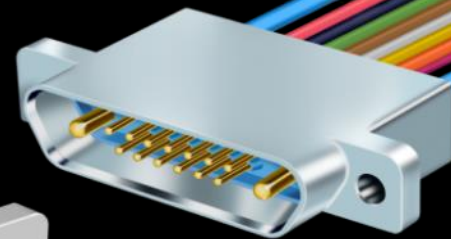
Cable and Panel Mount Versions

SERIES

79

SEVENTY-NINE

- Cable Connectors:
 - 790-024P Receptacles
 - 790-025S Plugs
 - 790-045P Receptacles
 - 790-046S Plugs
- Panel Mount Connectors:
 - 790-026P Receptacles
 - 790-027S Plugs



Series 79 Connector Styles

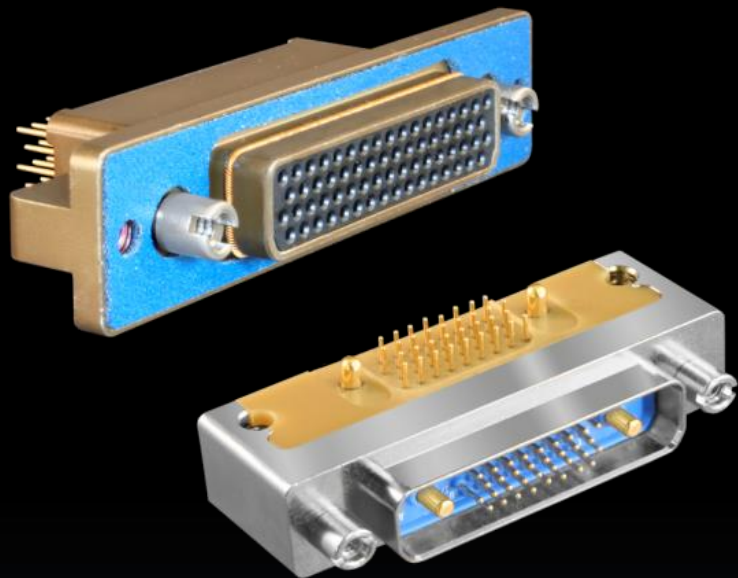
Straight and Right Angle PCB

SERIES

79

SEVENTY-NINE

- Straight PCB Connectors:
 - 790-028P Panel Mount Receptacle
 - 790-043P Free-Standing Receptacle
 - 790-029S Panel Mount Plugs
 - 790-044S Free-Standing Plugs
- Right Angle PCB Connectors:
 - 790-036P Panel Mount Receptacle
 - 790-014P Free-Standing Receptacle
 - 790-037S Panel Mount Plugs
 - 790-042S Free-Standing Plugs



Scoop-Proof Series 791

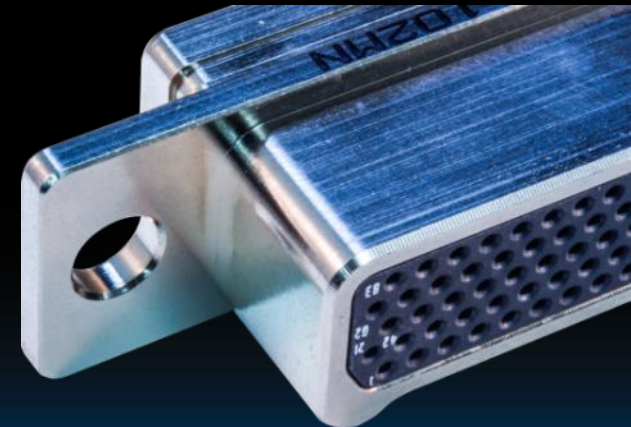
- Designed to help prevent uneven mating / un-mating that can result in bent leads
- Same materials / insert arrangements as 790 series
 - Leaf spring EMI spring found on pin side
- Banding porch version available



SERIES

79

SEVENTY-NINE



Series 79 Insert Arrangements

| Shell Size | Contact Arrangement | No. Contacts / Contact Size | Mating Face, Pin Connector (Socket Numbers Are Reversed) |
|------------|---------------------|-----------------------------------|--|
| A | A-5 | 5 #23 Contacts | |
| B | B-2P2 B-2W2 | 2 #16 Contacts | |
| B | B-9 | 9 #23 Contacts | |
| C | C-13 | 13 #23 Contacts | |
| D | D-15 | 15 #23 Contacts | |
| D | D-3P3 D-3W3 | 3 #16 Contacts | |
| D | D-7P2 D-7W2 | 5 #23 Contacts 2 #16 Contacts | |
| E | E-11P2 E-11W2 | 9 #23 Contacts 2 #16 Contacts | |
| E | E-19 | 19 #23 Contacts | |
| E | E-7P3 | 4 #23 Contacts 3 #16 Contacts | |
| F | F-15P2 F-15W2 | 13 #23 Contacts 2 #16 Contacts | |
| F | F-23 | 23 #23 Contacts | |
| F | F-5P5 F-5W5 | 5 #16 Contacts | |

| Shell Size | Contact Arrangement | No. Contacts / Contact Size | Mating Face, Pin Connector (Socket Numbers Are Reversed) |
|------------|---------------------|-----------------------------------|--|
| G | G-13P2 G-13W2 | 11 #23 Contacts 2 #12 Contacts | |
| G | G-33 | 33 #23 Contacts | |
| G | G-3P3 G-3W3 | 3 #12 Contacts | |
| H | H-10P4 H-10W4 | 6 #23 Contacts 4 #12 Contacts | |
| H | H-29P7 | 22 #23 Contacts 7 #16 Contacts | |
| H | H-36P2 H-36W2 | 34 #23 Contacts 2 #12 Contacts | |
| H | H-54P2 H-54W2 | 52 #23 Contacts 2 #16 Contacts | |
| H | H-5P5 H-5W5 | 5 #12 Contacts | |
| H | H-66 | 66 #23 Contacts | |
| J | J-17P4 J-17W4 | 13 #23 Contacts 4 #16 Contacts | |
| J | J-25P2 J-25W2 | 23 #23 contacts 2 #16 contacts | |

| Shell Size | Contact Arrangement | No. Contacts / Contact Size | Mating Face, Pin Connector (Socket Numbers Are Reversed) |
|------------|---------------------|-----------------------------------|--|
| J | J-33 | 33 #23 contacts | |
| J | J-7P7 J-7W7 | 7 #16 contacts | |
| K | K-27P4 K-27W4 | 23 #23 contacts 4 #16 contacts | |
| K | K-35P2 K-35W2 | 33 #23 contacts 2 #16 contacts | |
| K | K-43 | 43 #23 contacts | |
| K | K-9P9 K-9W9 | 9 #16 Contacts | |
| L | L-6P6 L-6W6 | 6 #12 Contacts | |
| L | L-78 | 78 #23 Contacts | |
| M | M-102 | 102 #23 Contacts | |

SERIES

79

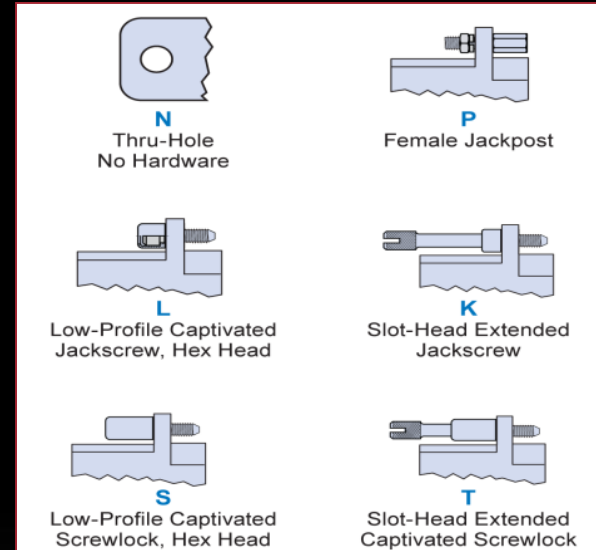
SEVENTY-NINE



Series 79

Mounting Hardware Options

- Complete selection of mounting hardware:
- P = Female Jackposts
- L, K, S, T = Jackscrews
- N = No Hardware



Series 79 Accessories

Reliable EMI and Environmental Protection

- Standard and low profile EMI backshells for easy braid attachment
- Panel mount EMI backshells with banding porch for Band-Master ATS[®] shield termination
- Protective covers



SERIES

79

SEVENTY-NINE

SERIES

79

SEVENTY-NINE

The widest range of
mission-critical interconnect
technologies in the world



Series 79
Connectors and Accessories