

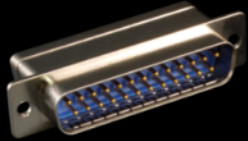
The widest range of
mission-critical interconnect
technologies in the world



Micro-D Subminiature 83513 Series Connectors and Cables

Rectangular Connector Series Summary

HiPer-D



Glenair Sr. 28

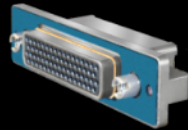
M24308

5 - 40 AMPs

31 Layouts

9-104 Ways

Micro-Crimp



Glenair Sr. 79

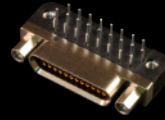
N/A

5-23 AMP

33 Layouts

2-102 Ways

Micro-D



Glenair Sr. 17

M83513

3 AMP

8 Layouts

9-100 Ways

AlphaLink



Glenair Sr. 171

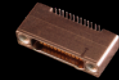
N/A

2 AMP

12 Layouts

4-40 Ways

Nano



Glenair Sr. 89

M32139

1 AMP

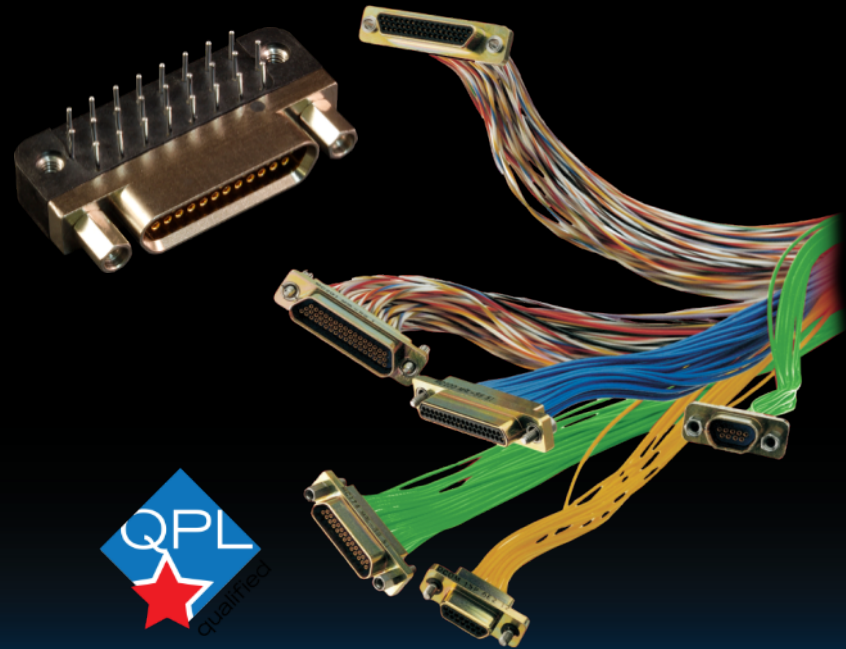
7 Layouts

9-85 Ways

Micro-D Connectors and Cables

Ultra-Miniature Rectangular Connectors for Mission-Critical Applications

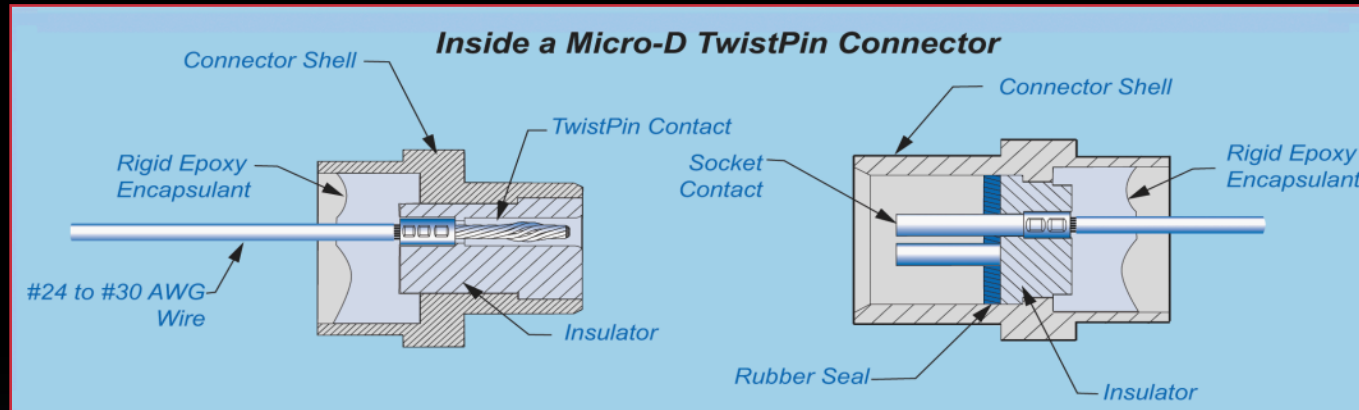
- QPL MIL-DTL-83513 and Glenair commercial versions
- 3 Amp contacts (9-130)
- .050 inch Micro layouts deliver optimal connector package density
- Machined shells and TwistPin contacts deliver optimal reliability and performance
- High temperature range: 260° C



Glenair Micro-D Advanced-Performance TwistPin Contact System



Precision machined components can be readily integrated into a wide range of connector packages



MIL-DTL-83513 Qualified Micro-D Subminiature Connectors



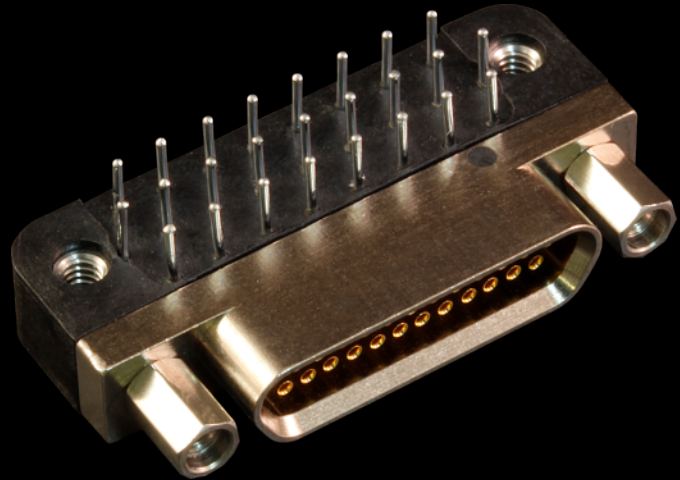
- Glenair is fully accredited to all released MIL-DTL-83513 approvals.
- Large Same-Day Stock of Mil 83513 and COTS product
- All of our Mil 83513 product are built using the TwistPin contact system



Standard Micro-D Subminiature Product Offerings



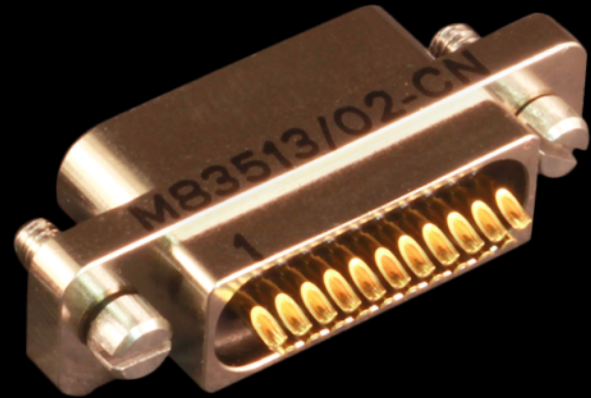
- Pigtail, PCB mount and solder cup variants available
- Metal shells - layouts from 9 through to 130
- Plastic shells - layouts from 9 to 51
- Different plating, wire and hardware options to suit the application
- Backshells and other key accessories
- Essential tools



Micro-D Subminiature Solder Cup Connectors



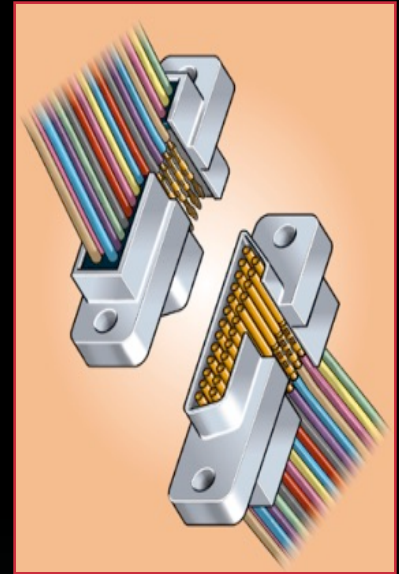
- Used for on-site solder termination, normally in an R & D build or when sub-modules come prewired
- Available in all layouts: Pin and Socket
- Large bore 24 AWG precision machined solder cups are available as a standard catalog offering



MWDM Micro-D Subminiature Flying Lead Connectors



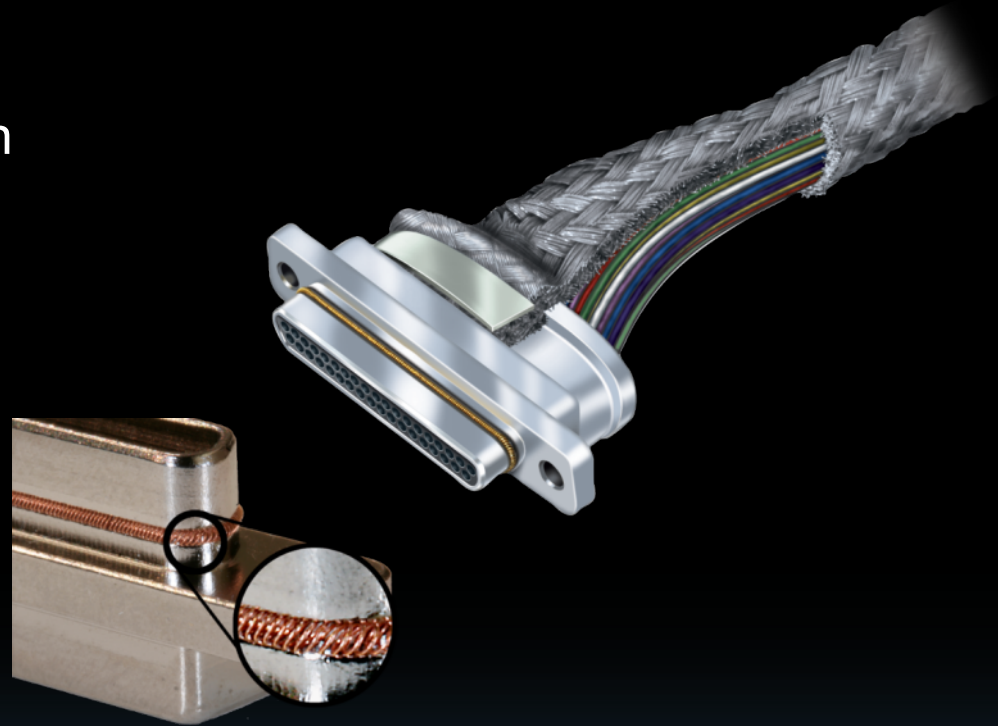
- Aluminum and stainless shells
- TwistPin contact system crimp terminated with customer choice of wire:
 - K: M22759/11 TFE
 - J: M22759/33 ETFE (Space)
 - E: NEMA HP3-EB TFE
- White, yellow, color-coded stripes and 10 color repeat
- Large same-day stock – color coded or single color wire
- Many hardware options



177 Shielded Micro-D Subminiature Cordsets



- The 177 series offers a connector that is prewired with an integral backshell and overbraid
- Standard and twisted pair wiring options available straight from the book
- Ground spring options for enhanced shell-to-shell conductivity



Micro-D Subminiature Hermetic Connectors



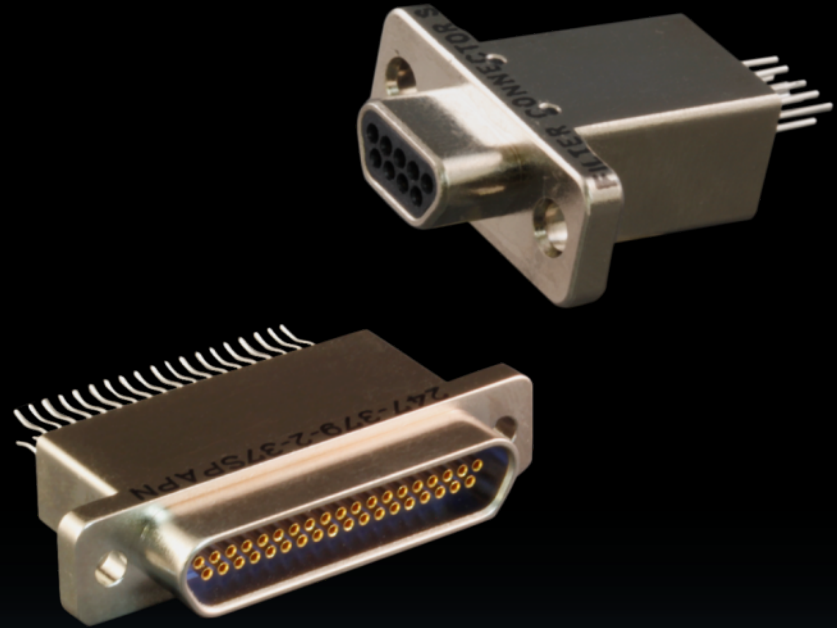
- Matched glass to metal
Kovar seals and contacts
- Kovar metal connector shells
- 9 through 100 contacts
- Weld mount or O-ring mount
- Integral jack posts
- Socket receptacles
- 1 amp; 150 volt AC rated
- 1×10^{-8} leak rate
- Same-day inventory



Filtered Micro-D Subminiature Connectors



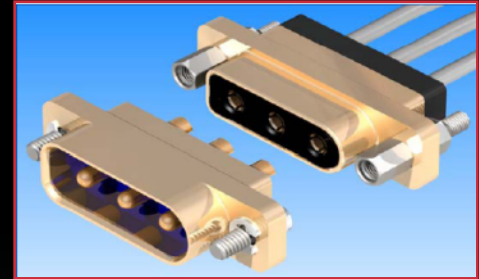
- Glenair supplies a full range of Capacitance, Pi and C-filtered Micro-D EMI/RFI filter connectors and connector assemblies
- Catalog filter products include:
 - ✓ Flying lead
 - ✓ In-line adapter
 - ✓ PCB mount
 - ✓ Solder cup



The GMPM Series Power Micro-D Subminiature



- Glenair GMPM range is available in power-only or power and signal configurations.
- Flying lead connectors
- Solder cup connectors
- PCB mount connectors (consult factory for availability)
- 13 amp rating on power pins
- Easily customized with power, coax, fiber and signal contacts



Largest Range of Micro-D Backshells in the Interconnect Industry



**EMI/RFI Round Cable
Entry Backshells**



**Split EMI/RFI Micro-D
Backshell with
Screwlocks**



**EMI/RFI Micro-D Backshells
With Braid Attached**



**Round Entry Split EMI/
RFI Micro-D Backshell
with Screwlocks**



**Elliptical Entry EMI/RFI
Micro-D Backshells**



**Elliptical EMI/RFI
Split Shell Micro-D
Backshell**



**Strain Relief Backshells
(not for EMI)**

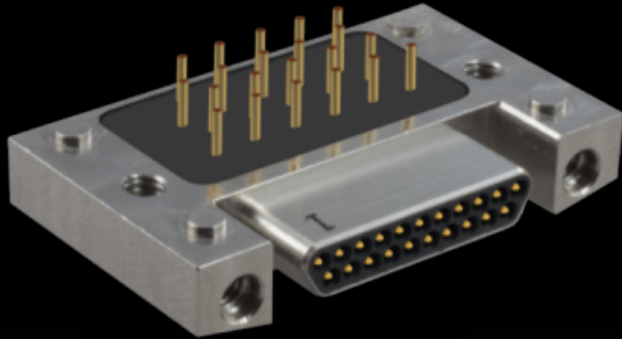


**Potting Shell
(not for EMI)**

Well-Master™ 260 (GHTM)

The high temperature Micro-D
for +260°C applications

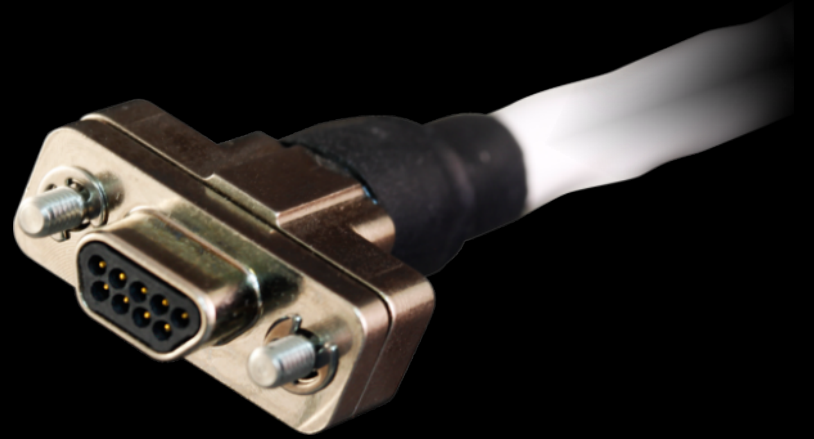
Well-Master **260°**



SpaceWire (GSWM)

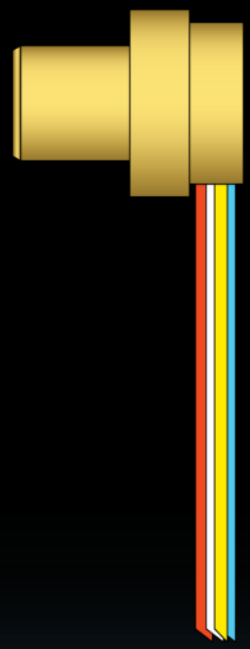
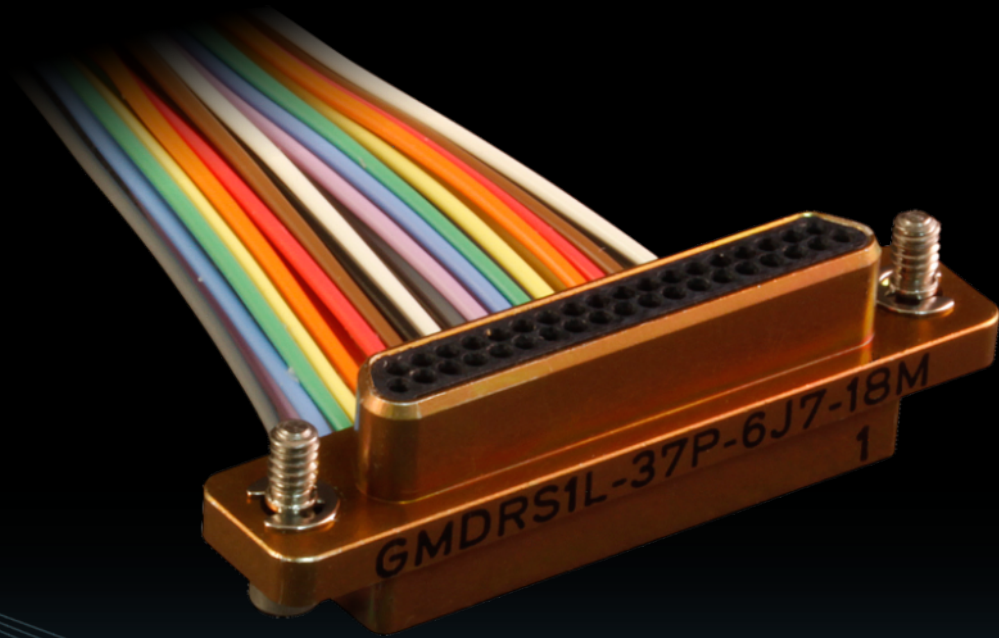
Space-protocol compatible turnkey Micro-D Jumpers

- Qualified for application in international space systems
- Full-duplex, point-to-point serial links and cables



Glenair Micro-D Right Angle (GMDR)

Pigtail Micro-D with right-angle wire exit – saves space!



Rear Panel Mount Micro-D (GRPM)

Connector configurations

- All standard Micro-D's
 - Solder cup
 - Pigtail
 - Circuit board
- O-Ring: **C** = conductive; **N** = non-conductive (Nitrile)
- Hardware: Rear panel mount jackpost with panel thickness .032-.125



MasterLatch™ Locking Micro-D (GMLM)

Low Insertion Force Thumb-Latch Micro-D

Master **Latch**®

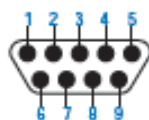


MasterLatch™ Locking Micro-D

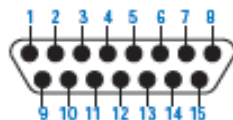


Insert arrangements

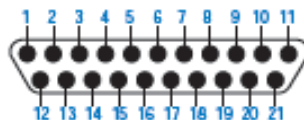
Face view pin connector - Micro-D contact arrangements



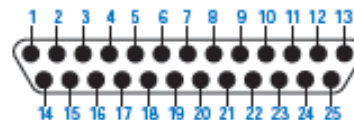
9 pin



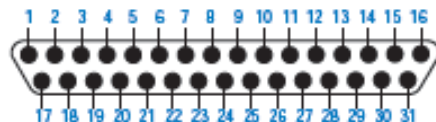
15 pin



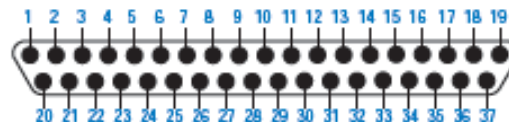
21 pin



25 pin

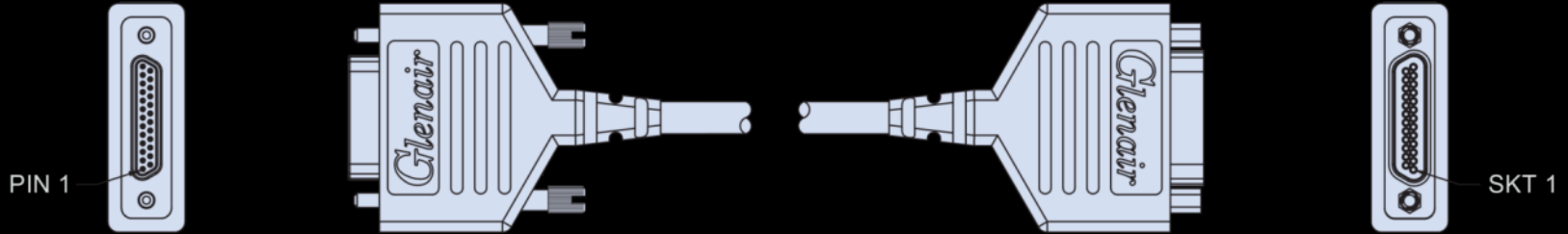


31 pin



37 pin

Glenair Micro-D Cordsets (GMDCS)



Available in
sizes 9 - 130



The widest range of
mission-critical interconnect
technologies in the world



Micro-D Subminiature 83513 Series Connectors and Cables