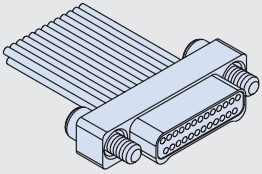
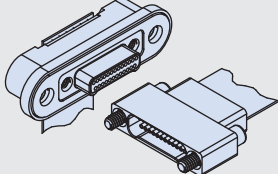
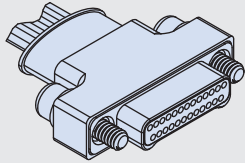
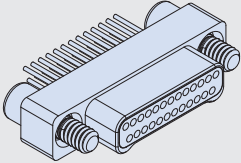
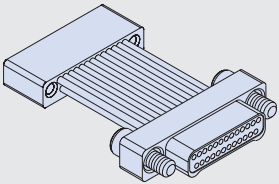
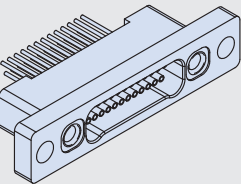
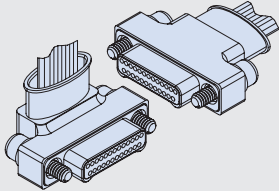
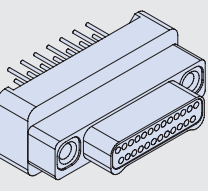
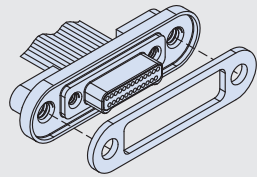
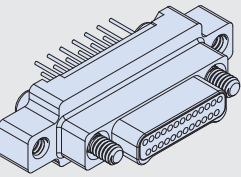
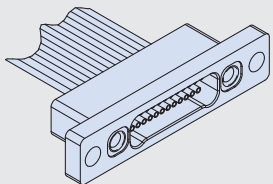
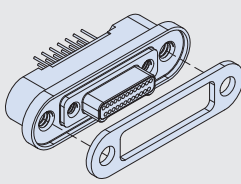
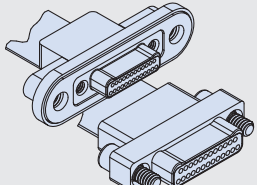
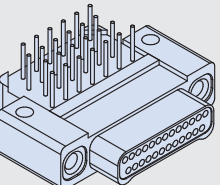
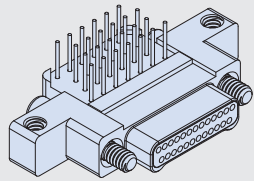
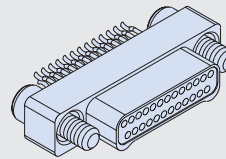


D

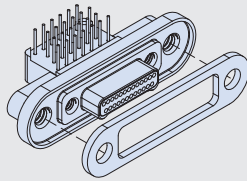
	<b>891-001 and 891-002 Connectors with Insulated Wire</b>	<b>D-3</b>		<b>891-034 Flex Assembly with Rear Panel Mount, Nano to Nano I/O</b>	<b>D-25</b>
	<b>891-031 Straight, 45° or 90° Angle Connector with Factory Installed Backshell and Insulated Wire</b>	<b>D-5</b>		<b>891-003 and 891-004 Connectors with Uninsulated Wire</b>	<b>D-29</b>
	<b>891-005 Back-to-Back Cable Assembly</b>	<b>D-9</b>		<b>891-053 Front Panel Mount Receptacle with Uninsulated Wire</b>	<b>D-31</b>
	<b>891-032 Back-to-Back Cable with Straight, 45° or 90° Angle Factory Installed Backshell and Insulated Wire</b>	<b>D-11</b>		<b>891-006 and 891-007 Vertical Mount Thru Hole PCB Connectors</b>	<b>D-33</b>
	<b>891-025 and 891-026 Rear Panel Mount Connectors with Insulated Wire and Gasket Seal</b>	<b>D-17</b>		<b>891-039 and 891-040 Vertical Mount Thru Hole PCB Connectors with Mounting Ears</b>	<b>D-39</b>
	<b>891-050 Front Panel Mount Receptacle with Insulated Wire</b>	<b>D-19</b>		<b>891-029 and 891-030 Rear Panel Mount, Vertical Thru Hole PCB Connectors with Gasket Seal</b>	<b>D-45</b>
	<b>891-033 Flex Assembly with Rear Panel Mount, Nano to Nano I/O</b>	<b>D-21</b>		<b>891-008 and 891-009 Right Angle Mount Thru Hole PCB Connectors</b>	<b>D-51</b>



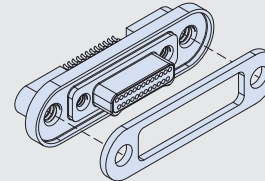
**891-043 and 891-044**  
**Right Angle Mount**  
**Thru Hole PCB**  
**Connectors with**  
**Mounting Ears** **D-57**



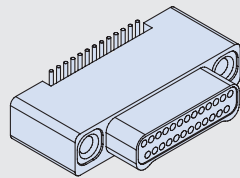
**891-014 and 891-015**  
**Straddle Mount**  
**Connectors** **D-97**



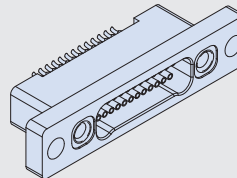
**891-027 and 891-028**  
**Rear Panel Mount,**  
**Right Angle Thru**  
**Hole PCB Connectors**  
**with Gasket Seal** **D-63**



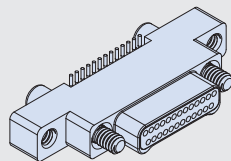
**891-035 and 891-036**  
**Rear Panel Mount,**  
**Straddle Mount**  
**Connectors with**  
**Gasket Seal** **D-103**



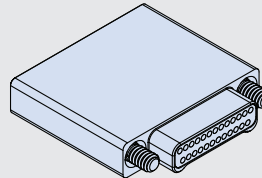
**891-010 and 891-011**  
**Vertical Surface**  
**Mount PCB**  
**Connectors** **D-69**



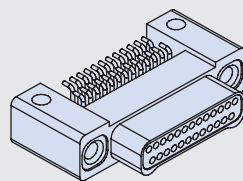
**891-051**  
**Front Panel Mount**  
**Receptacle, Straddle**  
**Mount** **D-109**



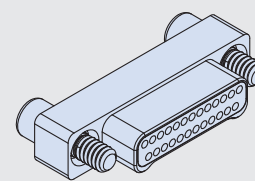
**891-017 and 891-018**  
**Vertical Surface**  
**Mount PCB**  
**Connectors with**  
**Jackscrews** **D-75**



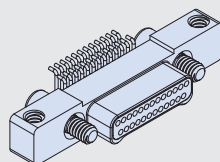
**891-016**  
**Sav-Con®**  
**Connector Saver** **D-113**



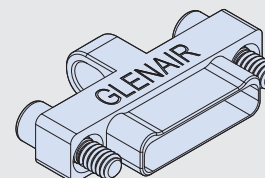
**891-012 and 891-013**  
**Right Angle,**  
**Surface Mount PCB**  
**Connectors** **D-81**



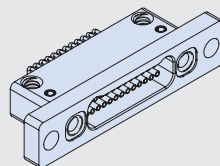
**891-037 and 891-038**  
**Shorting Connectors** **D-114**



**891-019 and 891-020**  
**Right Angle**  
**Surface Mount PCB**  
**Connectors with**  
**Jackscrews** **D-87**



**899-011**  
**EMI Cover** **D-116**



**891-052**  
**Front Panel Mount,**  
**Receptacle, Right**  
**Angle Surface**  
**Mount PCB** **D-93**

