

# The snap-lock, trigger-release connector

## 860-004R Panel Mounting Receptacles With PC Tails



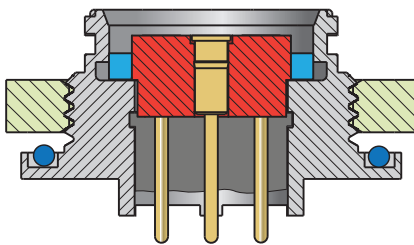
860-004R

### Specifications

- Operating temperature: -55°C to +125°C
- Dielectric withstanding voltage: 500 VAC
- Current rating: 5 A
- Contact resistance: 20 milliohms
- Water immersion: MIL-STD-810G Method 512.5, mated or unmated
- Ingress protection: IP67
- Mechanical life: 2000 cycles

### Connector Construction

- Shell: stainless steel
- Jam nut: stainless steel
- Contacts: copper alloy, gold plated
- Insert: glass-filled thermoplastic
- O-ring: fluorosilicone
- Peripheral seal: fluorosilicone
- Potting compound: RTV silicone



**Mounting Style 07**  
 for rear panel mounting

860-004R panel mount MouseBud receptacles with “hot shoe” type contacts are lightweight, ultra low profile and are rated for 2000 mating cycles. Suitable for hostile environments including soldier-wearable electronics, these receptacle connectors meet MIL-STD-810G immersion requirements mated or unmated. Contacts are easy to clean and damage resistant. Gold plated contacts, stainless steel shell and thermoplastic insulator. Fluorosilicone O-ring and seal. 5A current rating, 500VAC dielectric withstanding voltage rating. -55° to +125° C operating temperature.

How To Order		860-004R-	B7	ZR	07	A-	15-	30
Product	<b>860-004R</b> = MouseBud panel mount receptacle with PC tail terminals							
Contact Arrangement (Table 1)	<b>B7</b> = seven contacts, size B shell							
Finish	<b>M</b> = electroless NI <b>MT</b> = Nickel-PTFE <b>ZR</b> = Black zinc-nickel							
Shell Style	<b>00</b> = front panel mounting <b>07</b> = rear panel mounting							
Keyway Position (Table 2)	<b>A</b> = position A <b>D</b> = position D <b>B</b> = position B <b>E</b> = position E <b>C</b> = position C <b>F</b> = position F							
Panel Thickness	<b>15</b> = .062 (1.5) <b>30</b> = .125 (3.0)							
PC Tail Length	<b>20</b> = .08 (2.0) <b>30</b> = .12 (3.0)							

Table I: Contact Arrangement		
<p><b>B7</b></p>	Contact Arr.	<b>B7</b>
	# of Contacts	7
	Contact Diameter	.038 (0.96)
	Current Rating	5A

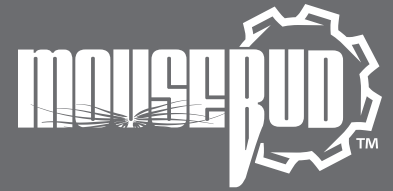
Table 2: Keyway Positions			
Code	A°	B°	C°
<b>A</b>	120°	200°	265°
<b>B</b>	80°	150°	265°
<b>C</b>	95°	150°	235°
<b>D</b>	95°	200°	320°
<b>E</b>	95°	225°	265°
<b>F</b>	120°	225°	320°

SERIES 860

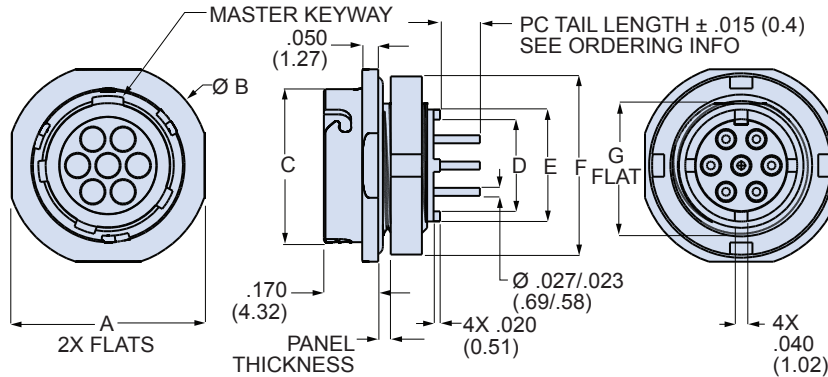
MouseBud™

The snap-lock, trigger-release connector

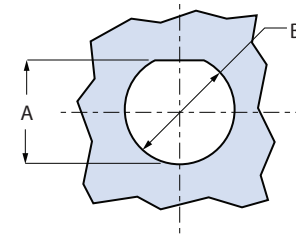
860-004R Panel Mounting Receptacles With PC Tails



Front Panel Mount Style 00 Dimensions														
Contact Arr.	A		B		C		D		E		F		G	
	In.	mm.	In.	mm.	In.	mm.	In.	mm.	In.	mm.	In.	mm.	In.	mm.
B7	.602	15.29	.635	16.13	.480	12.19	.290	7.37	.350	8.89	.562	14.27	.410	10.41

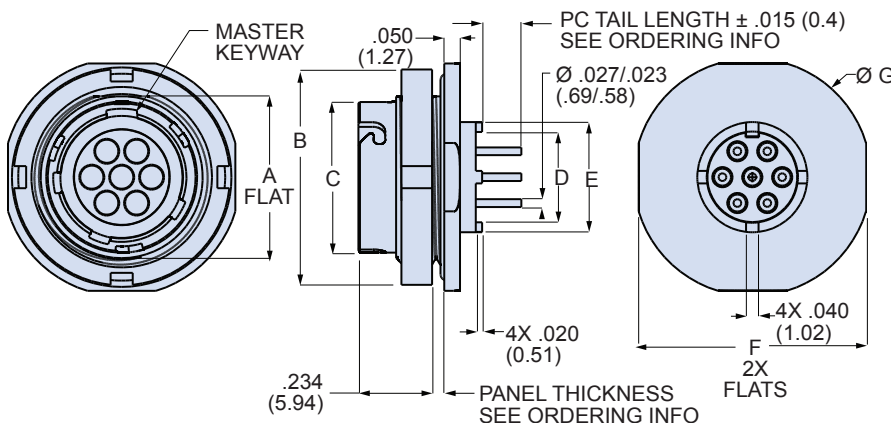


Style 00 Panel Cutout

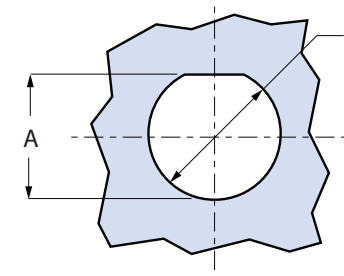


Contact Arr.	Shell Style	A		B	
		± .002 (0.05)	± .002 (0.05)	In.	mm.
B7	00	.416	10.57	.447	11.35

Rear Panel Mount Style 07 Dimensions														
Contact Arr.	A		B		C		D		E		F		G	
	In.	mm.	In.	mm.	In.	mm.	In.	mm.	In.	mm.	In.	mm.	In.	mm.
B7	.536	13.60	.688	17.48	.480	12.19	.290	7.37	.350	8.89	.723	18.36	.755	19.18

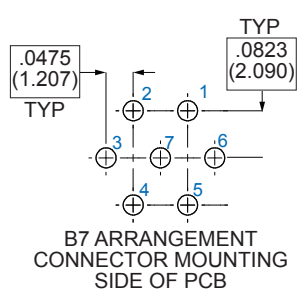


Style 07 Panel Cutout



Contact Arr.	Shell Style	A		B	
		± .002 (0.05)	± .002 (0.05)	In.	mm.
B7	07	.542	13.77	.572	14.53

B7 PCB Layout



Jam Nut Tightening Tools



Use these tools to install spanner-type jam nuts. 1/4 inch square drive. 20-25 in.-lbs. recommended torque. Hardened steel, nickel plated.

Layout	Mounting Style	Tool PN
B7	Style 00 Front Mt	600-146-05
B7	Style 07 Rear Mt	600-147-6