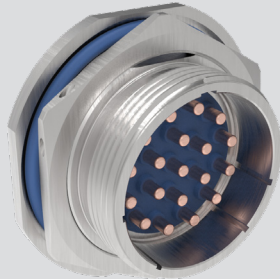


Series 806

Mil-Aero Connectors

806-087 Crimp Removable Hermetic Receptacle



Series 806 hermetic receptacles feature stainless steel shells and glass-to-metal seals. Rated for -65°C to +200°C temperature range. Micro miniature Series 806 connectors save size and weight compared to legacy aerospace-grade hermetic connectors. These high performance, parylene compatible connectors are suitable for pressurized bulkhead applications subject to vibration, moisture, and temperature extremes. The 806-087 receptacles are equipped with a crimp-removable termination system for vastly improved ease of use, and are available in box mount, solder mount, jam nut, and weld mount options.

Material/Finish

- Shell & jam-nut: 304L CRES/PER P/N DEV
- Contacts, hermetic: Nickel-iron alloy/gold plate
- Contacts, sockets: Copper alloy/gold plate
- Hoods, sockets: 305 CRES/passivate
- Insulator, hermetic: Vitreous glass
- Insulator, socket: High grade dielectric
- Seals & O-rings: Fluorosilicone

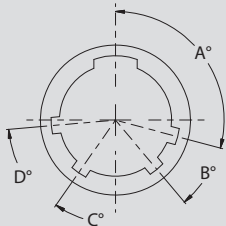
Test Criteria

- Leak rate: <1 X 10⁻⁷ ccHe/sec @ 1 ATM. delta pressure
- DWV: Per Table II
- I.R.: 5000 MEGOHMS min @ 500 VDC

How To Order ThermoRex Series 806 Mil-Aero Jam-nut Receptacle								
SAMPLE PART NUMBER		806-087	-07	Z1	8-7	P	-B	A
Series / Basic Part No.	806-087 Crimp Removable Hermetic Receptacle							
Mounting Type	02 = Box Mount 03 = Solder Mount 07 = Jam-Nut Mount 13 = Weld Mount							
Finish	Z1 = Passivated ZL = Nickel Plated							
Shell Size - Insert Arr.	See Table I							
Contact Type	P = Pin S = Socket							
Rear Attachment Style	B = Banding Porch T = Accessory Threads							
Polarization	A, B, C, D							

Please visit the hermetic catalog for a complete offering of our connectors.

Polarization Key Code



POS	A°	B°	C°	D°
A	105°	140°	215°	265°
B	102°	170°	248°	305°
C	80°	150°	230°	295°
D	68°	140°	205°	275°
E	64°	155°	234°	304°
F	72°	120°	200°	298°

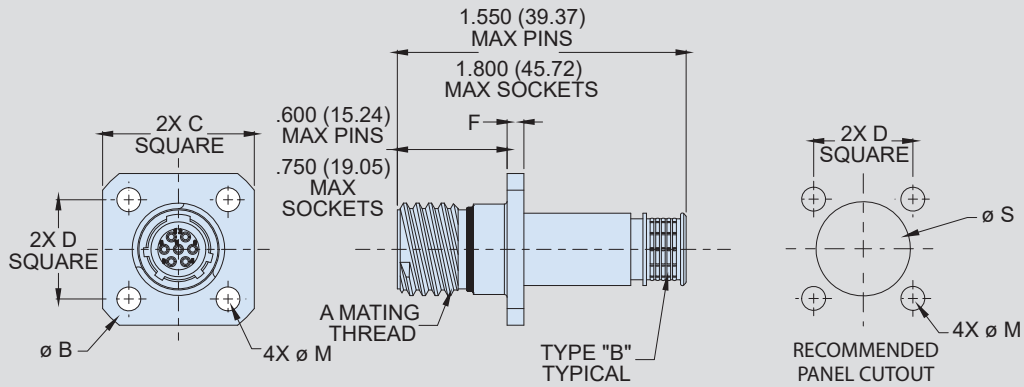
Table II: DWV Voltage

Cont. Size	Volts RMS
22	1300
20	1800
16	1800
12	1800
8	1000

Table I: Shell Size - Insert Arrangement

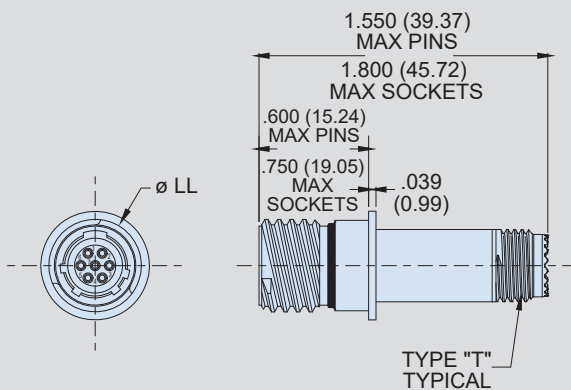
Contact Layout	Number of Contacts					Contact Layout	Number of Contacts					Contact Layout	Number of Contacts				
	22HD	20HD	16	12	8		22HD	20HD	16	12	8		22HD	20HD	16	12	8
7-3	3					22-69		69				16-2					2
8-4	4					24-92		92				18-3					3
8-7	7					8-1			1			20-4					4
9-11	11					10-2			2			22-5					5
10-15	15					11-4			4			24-8					8
11-19	19					12-5			5			10-8A	6		2		
12-26	26					14-7			7			11-13	11		2		
14-39	39					16-12			12			12-27	26		1		
16-60	60					18-15			15			14-21	17		4		
18-85	85					20-22			22			16-41	37		4		
20-110	110					22-24			24			18-59	55		4		
22-140	140					24-35			35			11-14	13			1	
24-186	186					9-1				1		14-22	20			2	
8-3		3				12-2				2		12-14	12			2	
9-5		5				14-3				3		16-42	40			2	
10-8		8				16-4				4		18-62	60			2	
11-10		10				16-7				7		14-20A	19				1
12-15		15				18-8				8		16-22	20				2
14-20		20				20-11				11		18-21	18				3
16-31		31				22-13				13		20-28	24				4
18-41		41				24-19				19		22-44	40				4
20-55		55				10-1				1		24-97	93				4

806-087-02 Box Mount Receptacle Dimensions



Shell Size	"A" Thread Mating	"Ø B" Max Flange	"C" Square Max Flange Flats	"D" Square BSC Mounting Holes	"F" Max Flange	"Ø M" Thru MTG Holes	"Ø S" Thru
7	.4375-.067P-.2L-TS-2A	0.968 (24.59)	0.750 (19.05)	0.469 (11.91)	0.100 (2.54)	0.128 (3.25)	0.445 (11.30)
8	.5000-.067P-.2L-TS-2A	1.040 (26.42)	0.822 (20.88)	0.531 (13.49)			0.509 (12.93)
9	.5625-.067P-.2L-TS-2A	1.130 (28.70)	0.885 (22.48)	0.594 (15.09)			0.577 (14.66)
10	.6250-.067P-.2L-TS-2A	1.174 (29.82)	0.913 (23.19)	0.625 (15.88)			0.645 (16.38)
11	.6875-.067P-.2L-TS-2A	1.240 (31.50)	0.960 (24.38)	0.670 (17.02)			0.712 (18.08)
12	.7500-.067P-.2L-TS-2A	1.354 (34.39)	1.040 (26.42)	0.765 (19.43)			0.768 (19.51)
14	.8750-.067P-.2L-TS-2A	1.510 (38.35)	1.133 (28.78)	0.859 (21.82)			0.890 (22.61)
16	1.0000-.067P-.2L-TS-2A	1.620 (41.15)	1.227 (31.17)	0.938 (23.83)	0.100 (2.54)	1.015 (25.78)	
18	1.1250-.067P-.2L-TS-2A	1.784 (45.31)	1.320 (33.53)	1.016 (25.81)		1.125 (28.58)	
20	1.2500-.067P-.2L-TS-2A	1.910 (48.51)	1.444 (36.68)	1.109 (28.17)	0.125 (3.18)	0.154 (3.91)	1.275 (32.39)
22	1.3750-.067P-.2L-TS-2A	2.083 (52.91)	1.570 (39.88)	1.203 (30.56)			1.400 (35.56)
24	1.5000-.067P-.2L-TS-2A	2.200 (55.88)	1.696 (43.08)	1.312 (33.32)			1.525 (38.73)

806-087-03 Solder Mount Receptacle Dimensions



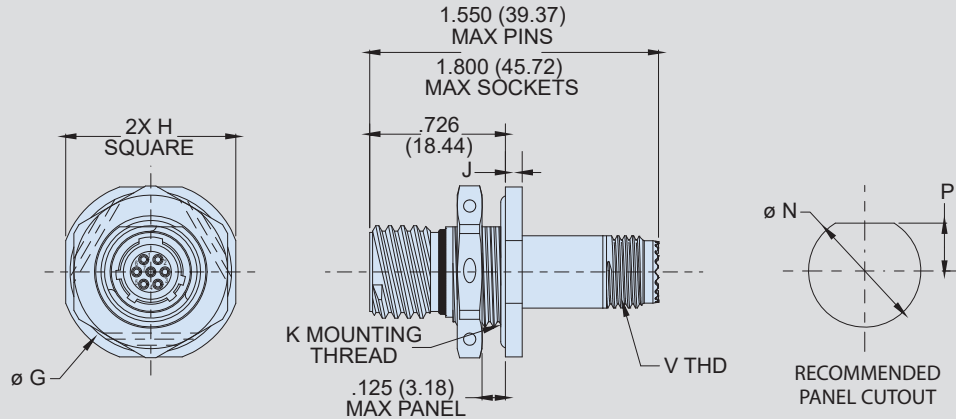
Shell Size	"A" Thread Mating	"Ø LL" Flange
7	.4375-.067P-.2L-TS-2A	0.520 (13.21)
8	.5000-.067P-.2L-TS-2A	0.581 (14.76)
9	.5625-.067P-.2L-TS-2A	0.649 (16.48)
10	.6250-.067P-.2L-TS-2A	0.717 (18.21)
11	.6875-.067P-.2L-TS-2A	0.784 (19.91)
12	.7500-.067P-.2L-TS-2A	0.841 (21.36)
14	.8750-.067P-.2L-TS-2A	0.962 (24.43)
16	1.0000-.067P-.2L-TS-2A	1.087 (27.61)
18	1.1250-.067P-.2L-TS-2A	1.197 (30.40)
20	1.2500-.067P-.2L-TS-2A	1.347 (34.21)
22	1.3750-.067P-.2L-TS-2A	1.472 (37.39)
24	1.5000-.067P-.2L-TS-2A	1.597 (40.56)

Series 806 Mil-Aero Connectors

806-087 Crimp Removable Hermetic Receptacle

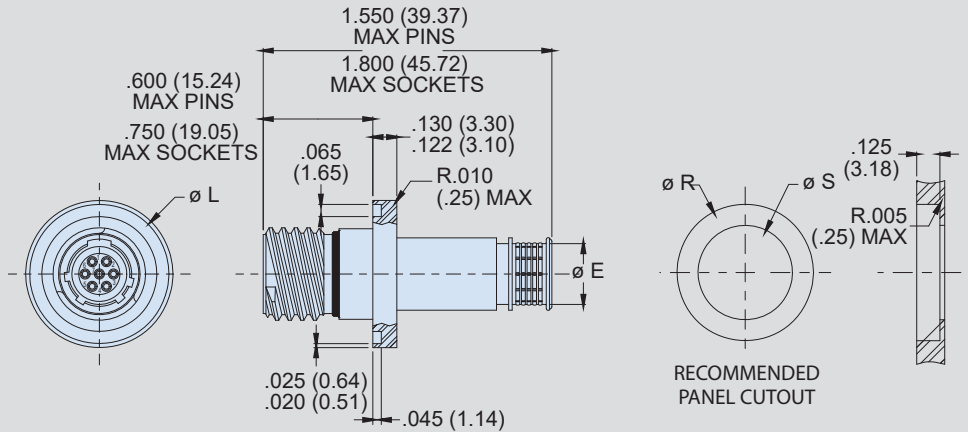


806-087-07 Jam-Nut Mount Receptacle Dimensions



Shell Size	"A" Thread Mating	" ϕG " Max Flange	"H" Square Max Flange Flats	"J" Max Flange	"K" Thread Mounting	" ϕN " +.005/- .000 Mounting Hole	"P" +.005/- .000 Mounting Flat	"V" Rear Accessory Thread
7	.4375-.067P-.2L-TS-2A	0.848 (21.54)	0.908 (23.06)	0.100 (2.54)	M13 X 1-6g .100R	0.522 (13.26)	0.224 (5.69)	M8 X 1 6g .100R
8	.5000-.067P-.2L-TS-2A	0.980 (24.89)	0.920 (23.37)		M15 X 1-6g .100R	0.601 (15.27)	0.256 (6.50)	M10 X 1 6g .100R
9	.5625-.067P-.2L-TS-2A	1.040 (26.42)	0.980 (24.89)		M16 X 1-6g .100R	0.640 (16.26)	0.287 (7.29)	M12 X 1 6g .100R
10	.6250-.067P-.2L-TS-2A	1.110 (28.19)	1.050 (26.67)		M18 X 1-6g .100R	0.719 (18.26)	0.318 (8.08)	M14 X 1 6g .100R
11	.6875-.067P-.2L-TS-2A	1.160 (29.46)	1.110 (28.19)		M19 X 1-6g .100R	0.759 (19.28)	0.350 (8.89)	M15 X 1 6g .100R
12	.7500-.067P-.2L-TS-2A	1.230 (31.24)	1.170 (29.72)		M21 X 1-6g .100R	0.837 (21.26)	0.381 (9.68)	M17 X 1 6g .100R
14	.8750-.067P-.2L-TS-2A	1.360 (34.54)	1.320 (33.53)		M24 X 1-6g .100R	0.955 (24.26)	0.443 (11.25)	M19 X 1 6g .100R
16	1.0000-.067P-.2L-TS-2A	1.515 (38.48)	1.444 (36.68)		M27 X 1-6g .100R	1.073 (27.25)	0.505 (12.83)	M22 X 1 6g .100R
18	1.1250-.067P-.2L-TS-2A	1.610 (40.89)	1.570 (39.88)		M30 X 1-6g .100R	1.192 (30.28)	0.568 (14.43)	M25 X 1 6g .100R
20	1.2500-.067P-.2L-TS-2A	1.850 (46.99)	1.760 (44.70)		0.128 (3.25)	M34 X 1-6g .100R	1.349 (34.26)	0.630 (16.00)
22	1.3750-.067P-.2L-TS-2A	2.010 (51.05)	1.913 (48.59)	M37 X 1-6g .100R		1.467 (37.26)	0.693 (17.60)	M31 X 1 6g .100R
24	1.5000-.067P-.2L-TS-2A	2.195 (55.75)	2.070 (52.58)	M41 X 1-6g .100R		1.624 (41.25)	0.755 (19.18)	M34 X 1 6g .100R

806-087-13 Weld Mount Receptacle Dimensions



Shell Size	"A" Thread Mating	"Ø E" ±.005 Banding Porch	"Ø L" ±.002 Flange	"Ø R" ±.002 MTG Hole	"Ø S" Thru
7	.4375-.067P-.2L-TS-2A	0.265 (6.73)	0.725 (18.42)	0.730 (18.54)	0.445 (11.30)
8	.5000-.067P-.2L-TS-2A	0.327 (8.31)	0.788 (20.02)	0.793 (20.14)	0.509 (12.93)
9	.5625-.067P-.2L-TS-2A	0.406 (10.31)	0.912 (23.16)	0.917 (23.29)	0.577 (14.66)
10	.6250-.067P-.2L-TS-2A	0.484 (12.29)	0.975 (24.76)	0.980 (24.89)	0.645 (16.38)
11	.6875-.067P-.2L-TS-2A	0.524 (13.31)	1.038 (26.37)	1.043 (26.49)	0.712 (18.08)
12	.7500-.067P-.2L-TS-2A	0.603 (15.32)	1.100 (27.94)	1.105 (28.07)	0.768 (19.51)
14	.8750-.067P-.2L-TS-2A	0.681 (17.30)	1.225 (31.12)	1.230 (31.24)	0.890 (22.61)
16	1.0000-.067P-.2L-TS-2A	0.782 (19.86)	1.350 (34.29)	1.355 (34.42)	1.015 (25.78)
18	1.1250-.067P-.2L-TS-2A	0.899 (22.83)	1.475 (37.47)	1.480 (37.59)	1.125 (28.58)
20	1.2500-.067P-.2L-TS-2A	1.043 (26.49)	1.600 (40.64)	1.605 (40.77)	1.275 (32.39)
22	1.3750-.067P-.2L-TS-2A	1.155 (29.34)	1.725 (43.82)	1.730 (43.94)	1.400 (35.56)
24	1.5000-.067P-.2L-TS-2A	1.273 (32.33)	1.850 (46.99)	1.855 (47.12)	1.525 (38.73)