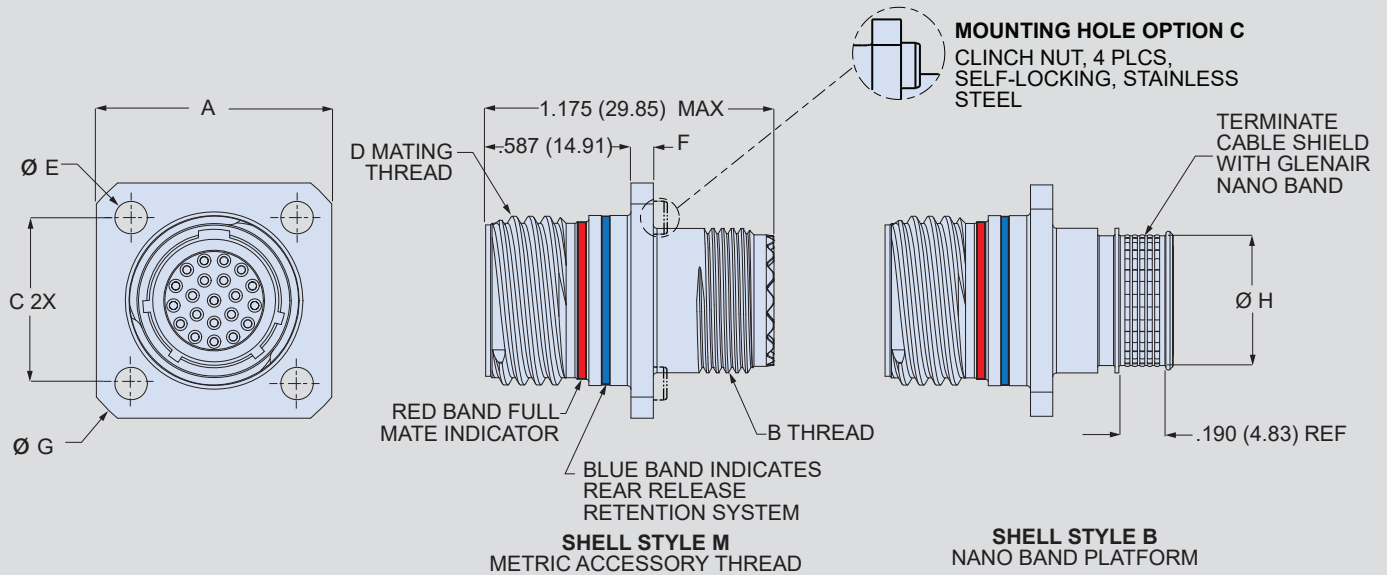


ENVIRONMENTAL, MICRO MINIATURE CIRCULAR

Series 806

Mil-Aero Connectors

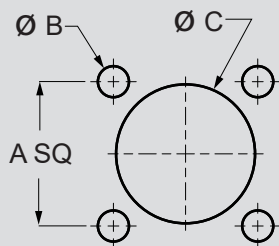
806-013 Square Flange Receptacle Connectors



806-013 Receptacle Dimensions

Shell Size	A Max	B Thread	C	D Mating Thread	ØE	F Max	G Max	H
7	.750 (19.05)	M8x1.0-6g-0.100R	.469 (11.91)	.4375-.067P-.2L-TS-2A	.128 (3.25)	.100 (2.54)	.968 (24.59)	.265 (6.73)
8	.822 (20.88)	M10x1.0-6g-0.100R	.531 (13.49)	.5000-.067P-.2L-TS-2A	.128 (3.25)	.100 (2.54)	1.040 (26.42)	.327 (8.31)
9	.885 (22.48)	M12x1.0-6g-0.100R	.594 (15.09)	.5625-.067P-.2L-TS-2A	.128 (3.25)	.100 (2.54)	1.130 (28.70)	.406 (10.31)
10	.913 (23.19)	M14x1.0-6g-0.100R	.625 (15.88)	.6250-.067P-.2L-TS-2A	.128 (3.25)	.100 (2.54)	1.174 (29.82)	.484 (12.29)
11	.944 (23.98)	M15x1.0-6g-0.100R	.670 (17.02)	.6875-.067P-.2L-TS-2A	.128 (3.25)	.100 (2.54)	1.200 (30.48)	.524 (13.31)
12	1.040 (26.42)	M17x1.0-6g-0.100R	.765 (19.43)	.7500-.067P-.2L-TS-2A	.128 (3.25)	.100 (2.54)	1.354 (34.39)	.603 (15.32)
14	1.133 (28.78)	M19x1.0-6g-0.100R	.859 (21.82)	.8750-.067P-.2L-TS-2A	.128 (3.25)	.100 (2.54)	1.510 (38.35)	.681 (17.30)
16	1.227 (31.17)	M22x1.0-6g-0.100R	.938 (23.83)	1.0000-.067P-.2L-TS-2A	.128 (3.25)	.100 (2.54)	1.620 (41.15)	.782 (19.86)
18	1.320 (33.53)	M25x1.0-6g-0.100R	1.016 (25.81)	1.1250-.067P-.2L-TS-2A	.128 (3.25)	.100 (2.54)	1.784 (45.31)	.899 (22.83)
20	1.444 (36.68)	M28x1.0-6g-0.100R	1.109 (28.17)	1.2500-.067P-.2L-TS-2A	.154 (3.91)	.125 (3.18)	1.910 (48.51)	1.043 (26.49)
22	1.570 (39.88)	M31x1.0-6g-0.100R	1.203 (30.56)	1.3750-.067P-.2L-TS-2A	.154 (3.91)	.125 (3.18)	2.083 (52.91)	1.155 (29.34)
24	1.696 (43.08)	M34x1.0-6g-0.100R	1.312 (33.32)	1.5000-.067P-.2L-TS-2A	.154 (3.91)	.125 (3.18)	2.200 (55.88)	1.273 (32.33)

806-013 Panel Cutout Dimensions



Shell Size	A SQ	ØB with Clinch Nut	ØB without Clinch Nut	ØC
7	.469 (11.91)	.128 (3.25)	.128 (3.25)	.443 (11.25)
8	.531 (13.49)	.128 (3.25)	.128 (3.25)	.505 (12.83)
9	.594 (15.09)	.128 (3.25)	.128 (3.25)	.572 (14.53)
10	.625 (15.88)	.128 (3.25)	.128 (3.25)	.640 (16.26)
11	.670 (17.02)	.128 (3.25)	.128 (3.25)	.707 (17.96)
12	.765 (19.43)	.128 (3.25)	.128 (3.25)	.762 (19.35)
14	.859 (21.82)	.128 (3.25)	.128 (3.25)	.885 (22.48)
16	.938 (23.83)	.128 (3.25)	.128 (3.25)	1.010 (25.65)
18	1.016 (25.81)	.128 (3.25)	.128 (3.25)	1.120 (28.45)
20	1.109 (28.17)	.128 (3.25)	.154 (3.91)	1.270 (32.26)
22	1.203 (30.56)	.128 (3.25)	.154 (3.91)	1.395 (35.43)
24	1.312 (33.32)	.128 (3.25)	.154 (3.91)	1.520 (38.61)