



SERIES 804 QDC PUSH-PULL

Mighty Mouse Connectors and Cables



Jam-Nut Mount Bulkhead Feed-Thru Connector



Series 804 Bulkhead Feed-Thru Receptacle

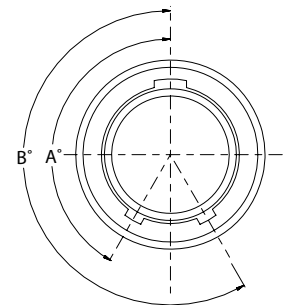
This series 804 design provides a separable connection on both sides of the mounting panel. Jam-nut receptacle features three contact options: pin/socket (preferred version), pin/pin, or socket/socket. Contacts are factory installed and are not removable. Available in aluminum or stainless steel. Gold-plated copper alloy contacts and ground spring, high-grade rigid dielectric insulator, fluorosilicone seals. Note: use caution when specifying pin/pin or socket/socket versions. the arrangement pattern is mirrored about the vertical axis.

How To Order	
Sample Part Number	804-067 -07 M 6-7 P P A
Series	804-067 = Bulkhead Feed-Thru Receptacle
Shell Style	-07 = Jam-Nut, Rear Panel Mount
Shell Material and Finish	C = Aluminum / Black Anodize (Non-Conductive) M = Aluminum / Electroless Nickel MT = Aluminum / Nickel-PTFE NF = Aluminum / Cadmium with Olive Drab Chromate ZN = Aluminum / Zinc-Nickel with Olive Drab Chromate ZNU = Aluminum / Zinc-Nickel with Black Chromate Z1 = Stainless Steel / Passivated
Shell Size - Insert Arrangement	Available in Shell Sizes 5 thru 14. See Contact Arrangements Page H-6
Contact Type Jam-Nut Side	P = Pin S = Socket Coax contacts are not unavailable.
Contact Type Other Side	P = Pin S = Socket
Polarization (See Table I)	A = Normal B = Pos. B C = Pos. C D = Pos. D E = Pos. E F = Pos. F

NOTES

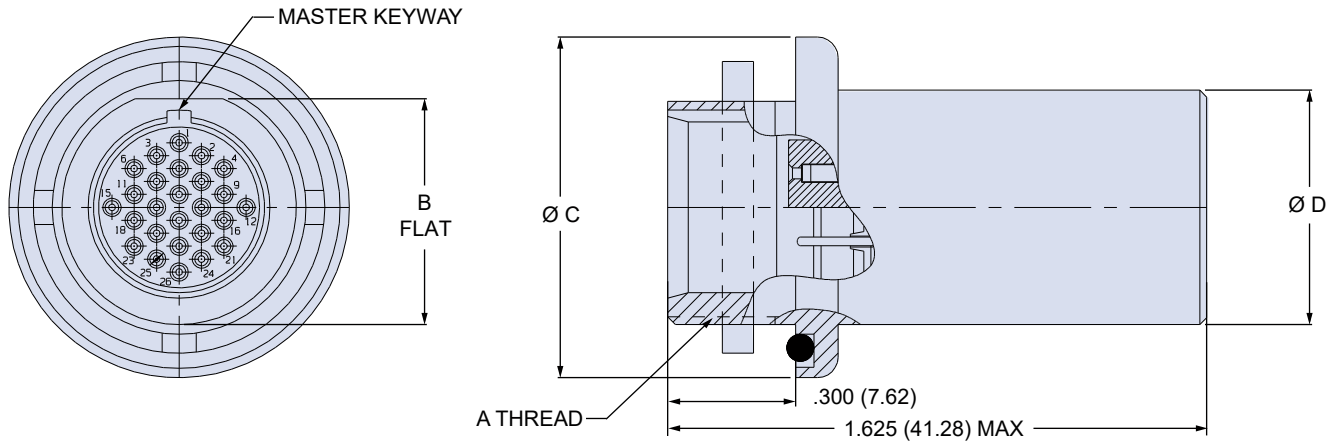
1. Contacts are non removable
2. Receptacle connector mates with all push/pull high density plug connectors with same polarization and opposite contact gender
3. Connectors with Pin-Pin and Socket-Socket contact styles will cause the arrangement pattern to be mirrored about the vertical centerline
4. See page H-9 for recommended panel cut-outs

Table I: Keyway Positions		
Key Position	Key Rotation	
	A°	B°
A	150°	210°
B	75°	210°
C	95°	230°
D	140°	275°
E	75°	275°
F	95°	210°



SERIES 804 QDC PUSH-PULL

JAM-NUT, REAR PANEL MOUNT BULKHEAD FEED-THRU - STYLE 07



Dimensions				
Shell Size	A Thread	B Flat	Ø C	Ø D
5	.4375-32 UN-2A	.415 (10.54)	.730 (18.54)	.450 (11.43)
6	.5000-32 UN-2A	.467 (11.86)	.730 (18.54)	.480 (12.19)
7	.6250-28 UN-2A	.580 (14.73)	.900 (22.86)	.580 (14.73)
8	.6250-28 UN-2A	.580 (14.73)	.945 (24.00)	.603 (15.32)
9	.6875-28 UN-2A	.655 (16.64)	1.000 (25.40)	.695 (17.65)
10	.7500-28 UN-2A	.721 (18.31)	1.075 (27.30)	.735 (18.67)
11	.8750-28 UN-2A	.790 (20.07)	1.140 (28.96)	.810 (20.57)
12	8125-28 UN-2A	.843 (21.41)	1.190 (30.23)	.880 (22.35)
14	8750-28 UN-2A	.968 (24.59)	1.312 (33.32)	1.010 (25.65)

Material and Finish

- Shell, jam-nut: aluminum alloy or CRES / see how to order table
- Insulator: LCP / N.A.
- Interfacial seal, O-ring: fluorosilicone / N.A.
- Contact: copper alloy / gold plate per ASTM B 488, Type II, Code C, Class 1.25, over suitable underplate

SERIES 804 QDC PUSH-PULL