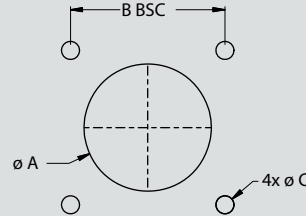
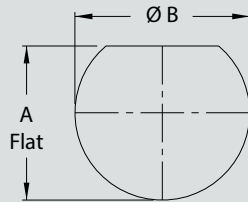


SERIES 800 UN THREAD MATING Mighty Mouse Connectors and Cables



Panel Cut-Out Dimensions Key / Keyway Positions and Polarization

PANEL CUT-OUT DIMENSIONS



Jam-Nut, Rear Panel Mount		
Shell Size	A Flat	ØB
5	.295 (7.49)	.322 (8.18)
	.291 (7.39)	.317 (8.05)
6	.362 (9.19)	.385 (9.78)
	.358 (9.09)	.380 (9.65)
7	.428 (10.87)	.448 (11.38)
	.424 (10.77)	.443 (11.25)
8	.483 (12.27)	.510 (12.95)
	.479 (12.17)	.505 (12.83)
9	.540 (13.72)	.572 (14.53)
	.536 (13.61)	.567 (14.40)
10	.614 (15.60)	.635 (16.13)
	.610 (15.49)	.630 (16.00)
12	.722 (18.34)	.760 (19.30)
	.718 (18.24)	.755 (19.18)
14	.856 (21.74)	.885 (22.48)
	.852 (21.64)	.880 (22.35)
15	.918 (23.32)	.947 (24.05)
	.914 (23.22)	.942 (23.93)

Square Flange			
Shell Size	Ø A	B BSC	Ø C
5	.328 (8.33)	.363 (9.22)	.098 (2.49)
			.094 (2.39)
6	.390 (9.91)	.423 (10.74)	.098 (2.49)
			.094 (2.39)
7	.453 (11.51)	.483 (12.27)	.132 (3.35)
			.128 (3.25)
8	.515 (13.08)	.542 (13.77)	.132 (3.35)
			.128 (3.25)
9	.578 (14.68)	.719 (18.26)	.132 (3.35)
			.128 (3.25)
10	.640 (16.26)	.719 (18.26)	.132 (3.35)
			.128 (3.25)
12	.765 (19.43)	.812 (20.62)	.132 (3.35)
			.128 (3.25)
14	.890 (22.61)	.906 (23.01)	.132 (3.35)
			.128 (3.25)
15	.953 (24.21)	.969 (24.61)	.132 (3.35)
			.128 (3.25)

KEY / KEYWAY POSITIONS AND POLARIZATIONS

Receptacle Shell Size 5 and 6	Receptacle Shell Size 7 thru 12
Key Position	Key Rotation
N Normal	150°
X	140°
Y	130°
Z	120°

Plug Shell Size 5 and 6	Plug Shell Size 7 thru 12
Key Position	Key Rotation
N Normal	150°
X	140°
Y	130°
Z	120°

SERIES 800 UN THREAD MATING