



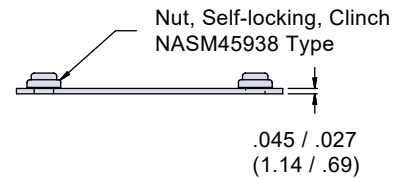
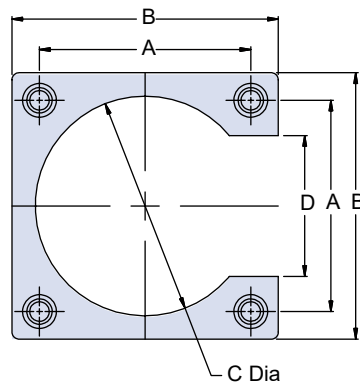
SERIES 80 MIGHTY MOUSE CONNECTORS Accessories, Backshells, and Tools



Mounting Flange with Standard or Metric Threads for Series 800, 801, 802, and 805 Connectors



How To Order			
Sample Part Number	809-199	-10	EAP
Series	809-199 = Mounting Flange with standard threads 809-303 = Mounting Flange with metric threads		
Dash No.	1 thru 22		
Shell Material/Finish	Mounting Flange: Aluminum Alloy Clinch Nuts: Cres/Passivate Omit for Chem Film per MIL-C-5541 EAP - Polyamide Primer per MIL-PRF-23377		



Dash No	800 shell Size	801 Shell Size	802 Shell Size	805 Shell Size	Dimensions										809-199 Thread Size	809-303 Thread Size
					A ± .005		B ± .010		C ± .010		D ± .010					
					in	mm	in	mm	in	mm	in	mm				
1			5		.500	12.70	.780	19.81	.400	10.16	.220	5.59	4-40	M3 X .5		
2			6		.625	15.88	.905	22.99	.600	15.24	.345	8.76	4-40	M3 X .5		
3				8	.660	16.76	.880	22.35	.700	17.78	.440	11.18	2-56	M2 X .4		
4			7		.688	17.48	.968	24.59	.680	17.27	.408	10.36	4-40	M3 X .5		
5	9,10				.720	18.29	1.000	25.40	.728	18.49	.440	11.18	4-40	M3 X .5		
6				9	.720	18.29	.940	23.88	.728	18.49	.440	11.18	2-56	M2 X .4		
7			8		.750	19.05	1.030	26.16	.770	19.56	.470	11.94	4-40	M3 X .5		
8				10	.785	19.94	1.005	25.53	.805	20.45	.565	14.35	2-56	M2 X .4		
9	12	13	9		.812	20.62	1.092	27.74	.860	21.84	.532	13.51	4-40	M3 X .5		
10				11	.848	21.54	1.068	27.13	.868	22.05	.628	15.95	2-56	M2 X .4		
11			10		.875	22.23	1.155	29.34	.946	24.03	.595	15.11	4-40	M3 X .5		
12	14				.909	23.09	1.189	30.20	.955	24.26	.629	15.98	4-40	M3 X .5		
13				12	.909	23.09	1.129	28.68	.909	23.09	.629	15.98	2-56	M2 X .4		
14			12		.938	23.83	1.218	30.94	1.018	25.86	.658	16.71	4-40	M3 X .5		
15	15				.969	24.61	1.249	31.72	1.049	26.64	.689	17.50	4-40	M3 X .5		
16		16			.981	24.92	1.261	32.03	1.061	26.95	.701	17.81	4-40	M3 X .5		
17		17		15	1.060	26.92	1.340	34.04	1.140	28.96	.780	19.81	4-40	M3 X .5		
18			14		1.125	28.58	1.405	35.69	1.205	30.61	.845	21.46	4-40	M3 X .5		
19		19*	15		1.188	30.18	1.468	37.29	1.268	32.21	.908	23.06	4-40	M3 X .5		
20				18	1.255	31.88	1.535	38.99	1.335	33.91	.975	24.77	4-40	M3 X .5		
21		21*		19	1.327	33.71	1.607	40.82	1.407	35.74	1.047	26.59	4-40	M3 X .5		
22				23	1.570	39.88	1.850	46.99	1.650	41.91	1.290	32.77	4-40	M3 X .5		

* Available for 809-199 only

ACCESSORIES, BACKSHELLS, AND TOOLS