



SERIES 80 MIGHTY MOUSE CONNECTORS Accessories, Backshells, and Tools



Series 800, 801, 803, 804 and 805 Direct Coupling, Saddle Clamp with EMI Ring, Non-Environmental



380MS135

Straight EMI adapter with direct coupling cable clamp or compression nut for Series 800, 801, 803, 804, and 805 connectors. Adapters feature an EMI ring for easy termination of cable shield.

How To Order						
Sample Part Number	380MS135	NF	07	04	-6	N
Series (See Table I)	380MS135 = Straight Entry					
Shell Material and Finish	See Material and Finish Table					
Size Code (See Table I)	05, 06, 11, 07, 08, 09, 10, 12, 13, 14, 16, 17					
Cable Entry Code (See Table II)	01, 02, 03, 04, 05, 06, 07, 08, 09, 10, 11, 12, 13					
Length	Specify length in 1/8" inch increments (e.g. 6 = .75 in) See Table I for standard length					
Clamp Style (See Table III)	Omit = Clamp with Saddle Bars N = Compression Nut, Low Profile					

Table III: Clamp Style	
Omit Clamp with Saddle Bars	N Compression Nut,

Material and Finish			
Code	Description	Code	Description
UCR	Aluminum / Zinc Cobalt with Black	ZN	Aluminum / Zinc-Nickel with Olive Drab Chromate
ZNU	Aluminum / Zinc Nickel with Black over Electroless Nickel		MT
M	Aluminum / Electroless Nickel	Z1	Stainless Steel / Passivated
NF	Aluminum / Cadmium with Olive Drab		

NOTES

- Minimum length is .63 Inches.
- Use shrink sleeve or bushing to build cable to dia. shown under saddle bars
- Materials
 - Adapter, Clamp, Nut and Saddles: Aluminum or Stainless Steel
 - Hardware: CRES/passivated

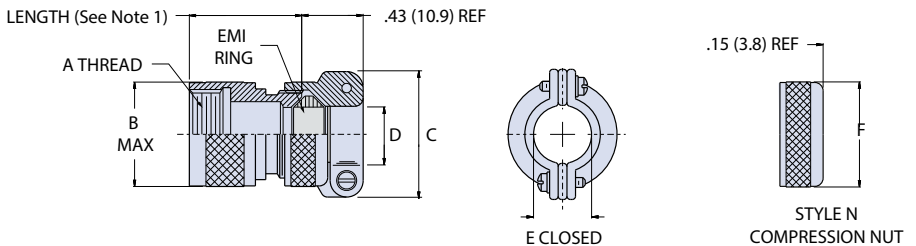


Table I: Size Code and Connector Dimensions					
Size Code	Shell Size Ref.		A Thd. Class-2B	B Max.	Std Length
	800/801 803/804	805		In.	
05	5	N/A	1/4-32 UNEF	.350 (8.89)	.63 (16.00)
06	6	N/A	5/16-32 UNEF	.415 (10.54)	.63 (16.00)
11	N/A	8	3/8-32 UNEF	.465 (11.81)	.63 (16.00)
07	7	9	7/16-28 UNEF	.530 (13.46)	.75 (19.05)
08	8	10	1/2-28 UNEF	.595 (15.11)	.75 (19.05)
09	9	11	9/16-24 UNEF	.650 (16.51)	.75 (19.05)
10	10	12	5/8-24 UNEF	.715 (18.16)	.75 (19.05)
12	11/12/13	13	11/16-24 UNEF	.785 (19.94)	.88 (22.35)
13	N/A	15	3/4-20 UNEF	.830 (21.08)	.88 (22.35)
14	14/15/16/17	18/19	15/16-20 UNEF	1.020 (25.91)	1.00 (25.40)
16	19	21	1 1/16-18 UNEF	1.155 (29.34)	1.00 (25.40)
17	21	23	1 3/16-18 UNEF	1.280 (32.51)	1.13 (28.70)

Table II: Saddle Clamp and Compression Nut Dimensions				
Dash No	C Dim	D Dia	E Dia Closed	F dia
01	.496 (12.60)	.119 (3.02)	.11 (2.79)	.398 (10.11)
02	.582 (14.78)	.182 (4.62)	.17 (4.32)	.460 (11.68)
03	.656 (16.66)	.244 (6.20)	.23 (5.84)	.523 (13.28)
04	.726 (18.44)	.307 (7.80)	.30 (7.62)	.585 (14.86)
05	.885 (22.48)	.369 (9.37)	.36 (9.14)	.647 (16.43)
06	.952 (24.18)	.432 (10.97)	.42 (10.67)	.710 (18.03)
07	1.018 (25.86)	.494 (12.55)	.48 (12.19)	.773 (19.63)
08	1.084 (27.53)	.557 (14.15)	.55 (13.97)	.832 (21.13)
09	1.148 (29.16)	.619 (15.72)	.61 (15.49)	.897 (22.78)
10	1.211 (30.76)	.682 (17.32)	.67 (17.02)	.959 (24.36)
11	1.273 (32.33)	.744 (18.90)	.73 (18.54)	1.021 (25.93)
12	1.400 (35.56)	.869 (22.07)	.86 (21.84)	1.083 (27.51)
13	1.539 (39.09)	1.010 (25.65)	.99 (25.15)	1.145 (29.08)