

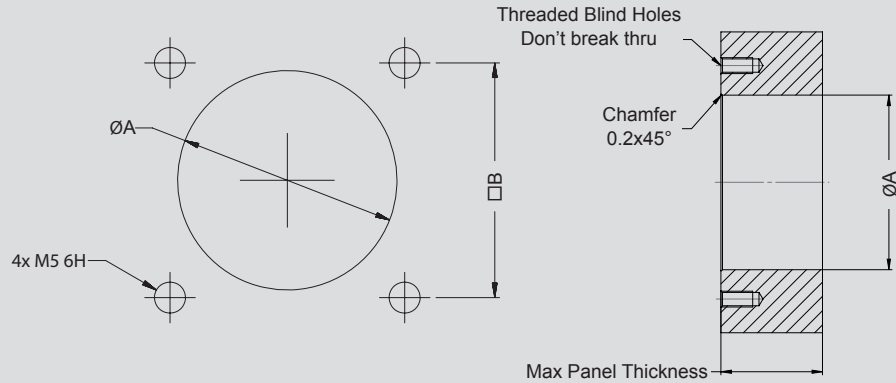
# SERIES 927-072 ITS-Ex Hazardous Zone Connectors



## Panel Cut-outs

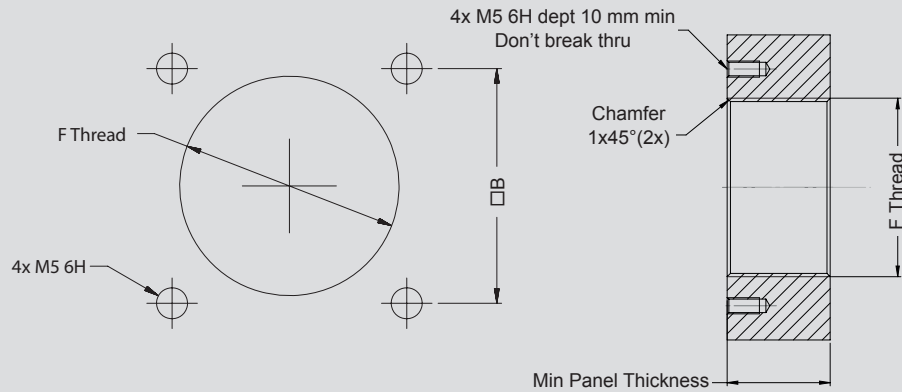
### FIXED IN-LINE RECEPTACLE

Shell Size	ØA	B	Max Panel Thickness
10SL	27 <sup>+0.5</sup> <sub>0</sub>	33 ±0.1	49 <sup>+1</sup> <sub>0</sub>
14S	29 <sup>0</sup> <sub>-0.5</sub>	33 ±0.1	65 <sup>+1</sup> <sub>0</sub>
16	35 <sup>+0.5</sup> <sub>0</sub>	39 ±0.1	74 <sup>+1</sup> <sub>0</sub>
18	39 <sup>+0.5</sup> <sub>0</sub>	42 ±0.1	74 <sup>+1</sup> <sub>0</sub>
28	55 <sup>0</sup> <sub>-0.5</sub>	52 ±0.1	102 <sup>+1</sup> <sub>0</sub>
36	64 <sup>+0.5</sup> <sub>0</sub>	62 ±0.1	120 <sup>+1</sup> <sub>0</sub>



### PANEL MOUNT FIXED RECEPTACLE Ex "d" (SCREW TYPE)

Shell Size	F Thread	B	Min Panel Thickness*
10SL	M25x1.5 6H	33 ±0.1	15 <sup>+0.5</sup> <sub>0</sub>
14S	M25x1.5 6H	33 ±0.1	15 <sup>+0.5</sup> <sub>0</sub>
16	M32x1.5 6H	39 ±0.1	15 <sup>+0.5</sup> <sub>0</sub>
28	M50x1.5 6H	52 ±0.1	15 <sup>+0.5</sup> <sub>0</sub>
36	M63x1.5 6H	62 ±0.1	15 <sup>+0.5</sup> <sub>0</sub>



(\*) For equipment screw type minimum panel thickness recommended is 7.5 mm

### PANEL MOUNT FIXED RECEPTACLE Ex "e" (JAM NUT TYPE)

Shell Size	ØD	Max Panel Thickness
10SL	26 ±0.5	14 ±0.5
14S	26 ±0.5	14 ±0.5
16	33 ±0.5	14 ±0.5
28	51 ±0.5	14 ±0.5
36	64 ±0.5	14 ±0.5

