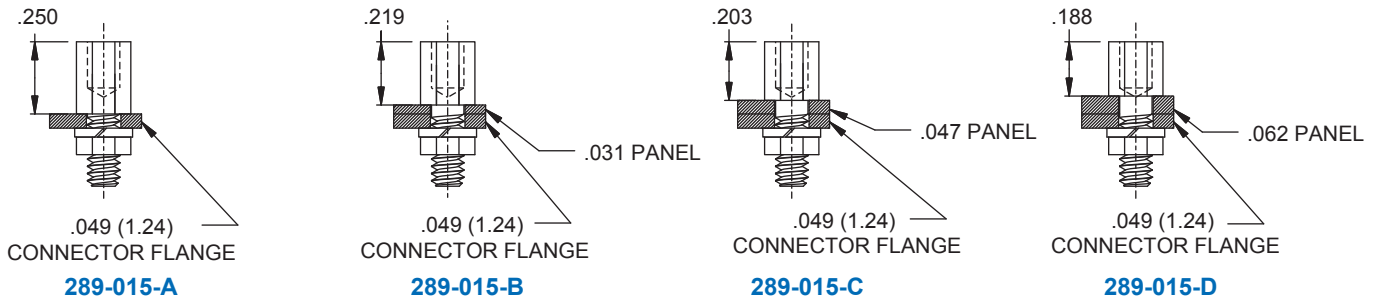


289-015 Rear panel mount, jackpost hardware kit

REAR PANEL MOUNTED CABLE CONNECTOR HARDWARE KITS

FOR REAR PANEL MOUNT, USE 289-015 CONFIGURED FOR PANEL THICKNESS PER TABLE I. MAX PANEL THICKNESS OF .062. IF PANEL THICKER THAN .062, COUNTERBORE PER FIGURE 1.



HARDWARE KIT

Dimension "A" changes to accommodate Different panel thicknesses

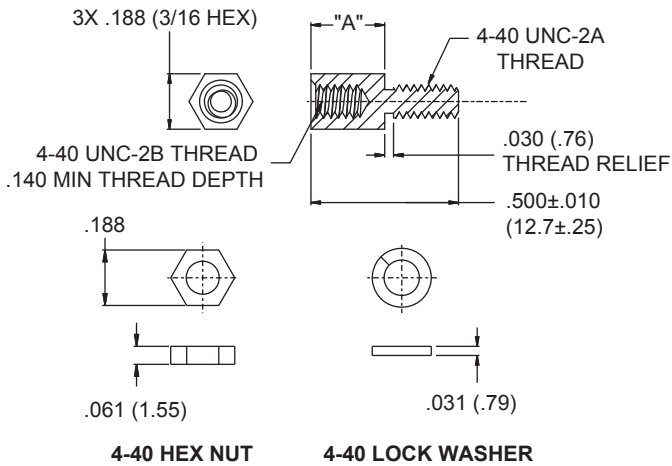
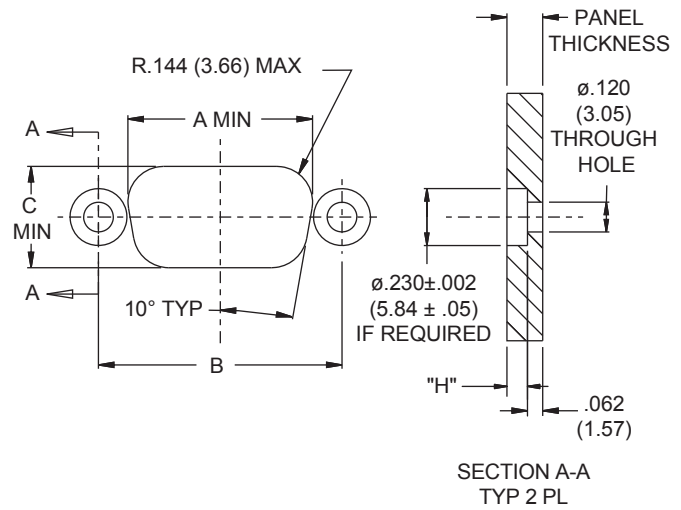


FIGURE 1



REAR PANEL MOUNT CUTOUT RECOMMENDATIONS AS VIEWED FROM FRONT FACE OF PANEL
 0.230 COUNTERBORE REQUIRED ON PANELS LARGER THAN .062

Table III: Panel Thickness

| Panel Thickness | Jackpost to be used | RPM Counterbore | | H | |
|-----------------|---------------------|-----------------|--------------|-------|------|
| | | In | mm | In | mm |
| NO PANEL | 289-015-A | N/A | N/A | N/A | N/A |
| 0.031 | 289-015-B | N/A | N/A | N/A | N/A |
| 0.047 | 289-015-C | N/A | N/A | N/A | N/A |
| 0.062 | 289-015-D | N/A | N/A | N/A | N/A |
| 0.093 | 289-015-D | 0.230 ± 0.005 | 0.584 ± .127 | 0.031 | 0.79 |
| 0.104 | 289-015-D | 0.230 ± 0.005 | 0.584 ± .127 | 0.042 | 1.07 |
| 0.125 | 289-015-D | 0.230 ± 0.005 | 0.584 ± .127 | 0.063 | 1.60 |
| 0.156 | 289-015-D | 0.230 ± 0.005 | 0.584 ± .127 | 0.094 | 2.39 |