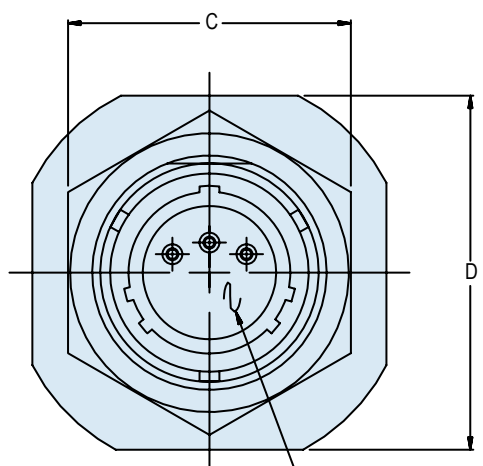
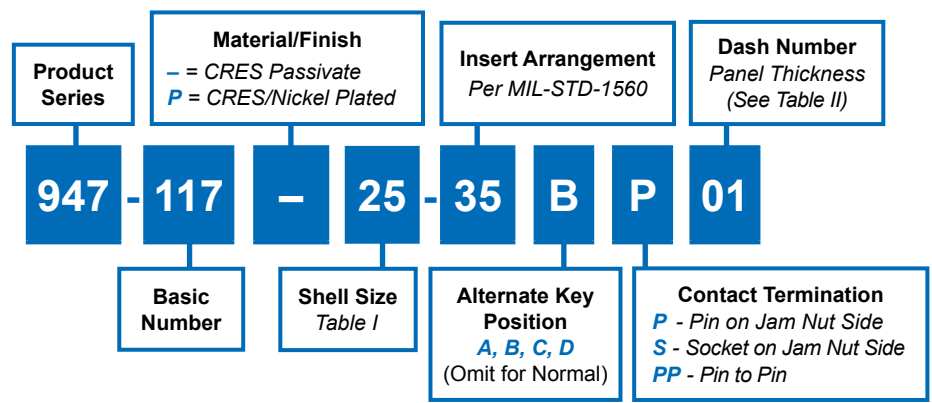


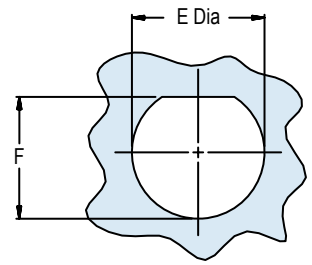
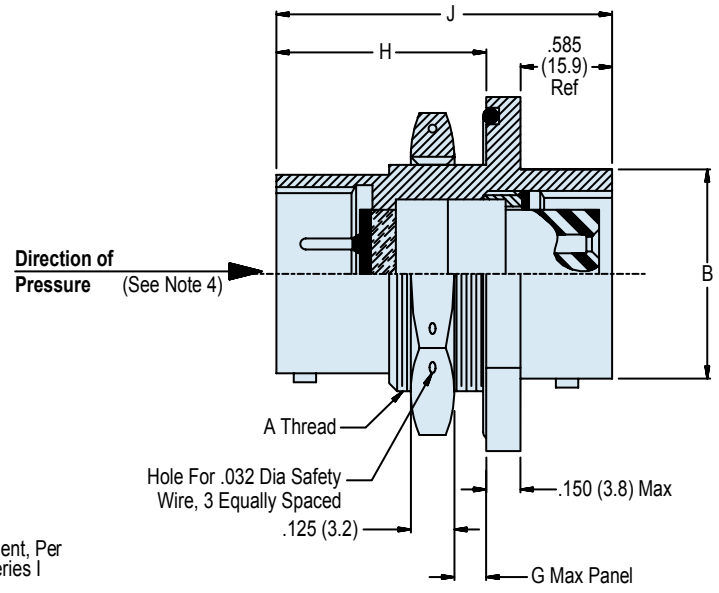


947-117 Jam Nut Mount Hermetic Bulkhead Feed-Thru for MIL-DTL-38999 Series I Type

B



Insert Arrangement, Per Mil-c-38999, Series I



Recommended Panel Cut-out

Dimensions in Inches (millimeters) are subject to change without notice.

947-117
Jam Nut Mount Hermetic Bulkhead Feed-Thru
for MIL-DTL-38999 Series I Type



TABLE I: CONNECTOR DIMENSIONS						
Shell Size	A Thread Class 2A	B Dia Max	C Hex	D Flats	E Dia ± .005 (0.13)	F +.000 -.005 (+0.0 -0.13)
9	11/16-24 UNEF	.573 (14.6)	.875 (22.1)	1.062 (27.0)	.703 (17.9)	.669 (17.0)
11	13/16-20 UNEF	.701 (17.8)	1.000 (25.4)	1.250 (31.8)	.827 (21.0)	.769 (19.5)
13	1-20 UNEF	.851 (21.6)	1.188 (30.2)	1.375 (34.9)	1.015 (25.8)	.955 (24.3)
15	1 1/8-18 UNEF	.976 (24.8)	1.312 (33.3)	1.500 (38.1)	1.140 (29.0)	1.084 (27.5)
17	1 1/4-18 UNEF	1.101 (28.0)	1.438 (37.7)	1.625 (41.3)	1.265 (32.1)	1.208 (30.7)
19	1 3/8-18 UNEF	1.208 (30.7)	1.562 (39.7)	1.812 (46.0)	1.390 (35.3)	1.333 (33.9)
21	1 1/2-18 UNEF	1.333 (33.9)	1.688 (42.9)	1.938 (49.2)	1.515 (38.5)	1.459 (37.1)
23	1 5/8-18 UNEF	1.458 (37.0)	1.812 (46.0)	2.062 (52.4)	1.640 (41.7)	1.580 (40.1)
25	1 3/4-18 UNS	1.583 (40.2)	2.000 (50.8)	2.188 (55.6)	1.765 (44.8)	1.709 (43.4)

TABLE II: PANEL THICKNESS			
DASH NO	G MAX	H MAX	J MAX
01	.250 (6.4)	1.060 (26.9)	1.790 (45.5)
02	.500 (12.7)	1.310 (33.3)	2.040 (51.8)
03	.750 (19.1)	1.560 (39.6)	2.290 (58.2)
04	1.000 (25.4)	1.810 (46.0)	2.540 (64.5)

APPLICATION NOTES

- | | |
|---|---|
| <ol style="list-style-type: none"> 1. Assembly identified with manufacturer's name and PN, space permitting. 2. For pin/pin and skt/skt, symmetrical layouts only, consult factory for available insert arrangements. 3. Power to a given contact on one end will result in power to contact directly opposite, regardless of identification letter. 4. Hermeticity = less than 1×10^{-7} cc/sec at one atmosphere. Not for use in liquid atmosphere. | <ol style="list-style-type: none"> 5. Electrical safety limits must be established by user, peak voltage, switching surge, transient, etc. should be used to determine the safety of the application. 6. Material/finish:
Shell, lock ring, jam nut—CRES/see part no. development.
Contacts—copper alloy/gold plate and alloy 52/gold plate
Insulators—high-grade rigid dielectric/N.A. and full glass.
Seals—fluorosilicone/ N.A. 7. Metric dimensions (mm) are indicated in parentheses. |
|---|---|

Dimensions in Inches (millimeters) are subject to change without notice.