

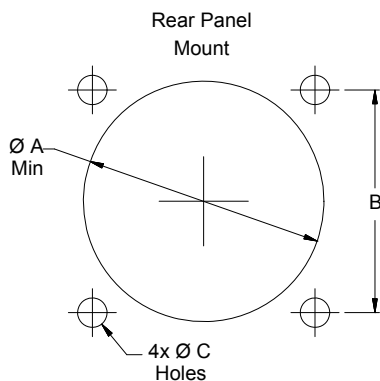
ITS Series, VG 95234 Type Reverse-Bayonet Filter Connectors Panel Cut-Outs



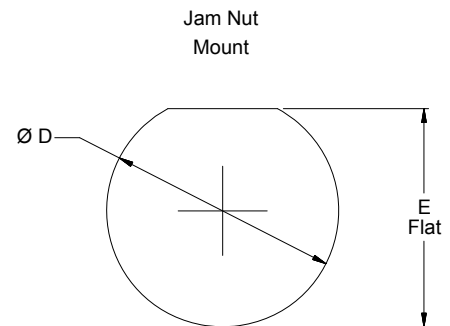
Notes

- Materials/Finishes: Shells, Jam Nut - See Table II
Insulators - high grade rigid dielectric/N.A.
Seals - Fluorosilicone
Contacts: Copper alloy 50μ" Gold over 50μ" Nickel
- Assembly to be identified with Glenair's name, part number, and date code - space permitting.
- Insert Arrangement in accordance with MIL-STD-1651. (Arrangement shown for reference only)
- EMI Circular Filters designed to meet requirements of MIL-STD-2120 and VG 95234.
- All contacts to have identical filter value. Other filter arrangements available, contact factory.
- Electrical Ratings: DWV- 500 VDC; Standard Operating Voltage 200 VDC.
- Insulation Resistance: 5000 MegOhms Min. at 200 VDC for Class A, B, C, D, E, F, G & J. 1,000 MegOhms @ 100 VDC for Classes X, Y, & Z
- Operating Temperature -55°C to +125°C (Env Class Connectors)
- Other filter styles (Pi, C-L, L-C, Unbalanced Pi, Multi-Stage, Multi-Value) are available, please consult the factory.

ITS Series Reverse Bayonet Rear Panel Mount Cut-Outs			
Shell Size	Ø A Min	B ±.004 (.1)	Ø C Holes
10SL	.752 (19.1)	.717 (18.2)	.182 (4.6) .172 (4.4)
14S	1.004 (25.5)	.906 (23.0)	
16, 16S	1.114 (28.3)	.969 (24.6)	
18	1.248 (31.7)	1.062 (27.0)	
20	1.378 (35.0)	1.157 (29.4)	
22	1.508 (38.3)	1.252 (31.8)	
24	1.646 (41.8)	1.374 (34.9)	
28	1.874 (47.6)	1.563 (39.7)	.222 (5.6) .212 (5.4)
32	2.138 (54.3)	1.752 (44.5)	
36	2.382 (60.5)	1.937 (49.2)	
40	2.614 (66.4)	2.185 (55.5)	



ITS Series Reverse Bayonet Jam Nut Mount Cut-Outs		
Shell Size	Ø D	E Flat
10SL	.892 (22.66)	.827 (21.00)
	.882 (22.40)	.813 (20.65)
14S	1.142 (29.01)	1.079 (27.40)
	1.132 (28.75)	1.065 (27.05)
16, 16S	1.268 (32.21)	1.219 (30.95)
	1.258 (31.95)	1.205 (30.61)
18	1.392 (35.36)	1.329 (33.75)
	1.382 (35.10)	1.315 (33.40)
20	1.518 (38.56)	1.451 (36.85)
	1.508 (38.30)	1.437 (36.50)
22	1.642 (41.71)	1.577 (40.05)
	1.632 (41.45)	1.563 (39.70)
24	1.768 (44.91)	1.707 (43.35)
	1.758 (44.65)	1.693 (43.00)
28	2.018 (51.26)	1.951 (49.55)
	2.008 (51.00)	1.937 (49.20)
32	2.268 (57.61)	2.203 (55.95)
	2.258 (57.35)	2.189 (55.60)
36	2.518 (63.96)	2.455 (62.35)
	2.508 (63.70)	2.441 (62.00)
40	2.768 (70.31)	2.699 (68.55)
	2.758 (70.05)	2.685 (68.20)



Dimensions in inches (millimeters) and are subject to change without notice.