

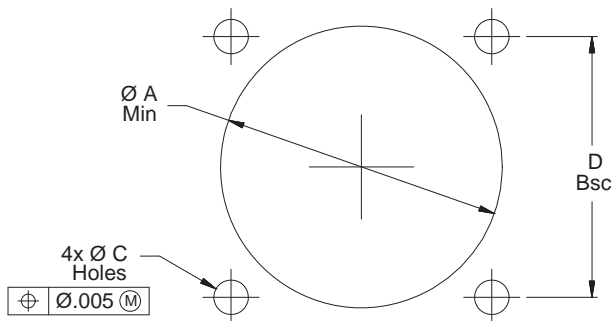
MIL-DTL-38999 Series I Type Filter Connectors Panel Cut-Outs



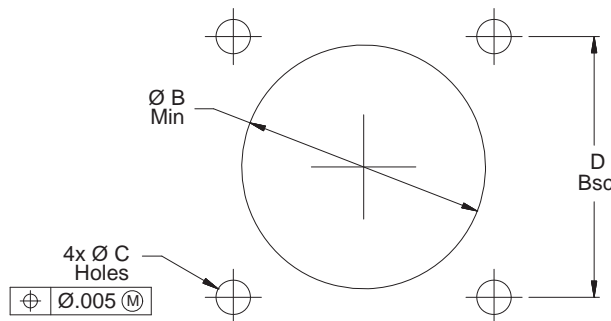
MIL-DTL-38999
Type

B

Back Panel Mounting

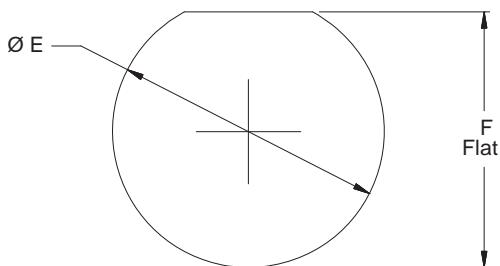


Front Panel Mounting



| MIL-DTL-38999 Series I Square Flange Panel Cut-Outs | | | | |
|---|--------------------|----------------------|--------------------------|--------------|
| Shell Size | Ø A Min Back Panel | Ø B Min* Front Panel | Ø C Holes | D Bsc |
| 9 | .656 (16.7) | .625 (15.9) | .133 (3.4) .123 (3.1) | .719 (18.3) |
| 11 | .796 (20.2) | .750 (19.1) | | .812 (20.6) |
| 13 | .922 (23.4) | .906 (23.0) | | .906 (23.0) |
| 15 | 1.047 (26.6) | 1.016 (25.8) | | .969 (24.6) |
| 17 | 1.219 (31.0) | 1.141 (29.0) | | 1.062 (27.0) |
| 19 | 1.297 (32.9) | 1.141 (29.0) | | 1.156 (29.4) |
| 21 | 1.422 (36.1) | 1.266 (32.2) | | 1.250 (31.8) |
| 23 | 1.547 (39.3) | 1.375 (34.9) | .159 (4.0) .149 (3.8) | 1.375 (34.9) |
| 25 | 1.672 (42.5) | 1.484 (37.7) | .155 (3.9) .145 (3.7) | 1.500 (38.1) |

*Note: Accessory threads for shell size 9 thru 17 are one size larger than MIL-DTL-38999 Series I to accommodate filters. Recommended front panel cut-outs (Ø B) modified accordingly.



| MIL-DTL-38999 Series I Jam Nut Panel Cut-Out | | |
|--|--------------|--------------|
| Shell Size | Ø E | F Flat |
| 9 | .710 (18.0) | .670 (17.0) |
| | .700 (17.8) | .660 (16.8) |
| 11 | .835 (21.2) | .771 (19.6) |
| | .825 (21.0) | .761 (19.3) |
| 13 | 1.020 (25.9) | .955 (24.3) |
| | 1.010 (25.7) | .945 (24.0) |
| 15 | 1.145 (29.1) | 1.085 (27.6) |
| | 1.135 (28.8) | 1.075 (27.3) |
| 17 | 1.270 (32.3) | 1.210 (30.7) |
| | 1.260 (32.0) | 1.200 (30.5) |
| 19 | 1.395 (35.4) | 1.335 (33.9) |
| | 1.385 (35.2) | 1.325 (33.7) |
| 21 | 1.520 (38.6) | 1.460 (37.1) |
| | 1.510 (38.4) | 1.450 (36.8) |
| 23 | 1.645 (41.8) | 1.585 (40.3) |
| | 1.635 (41.5) | 1.575 (40.0) |
| 25 | 1.770 (45.0) | 1.710 (43.4) |
| | 1.760 (44.7) | 1.700 (43.2) |

Dimensions in inches (millimeters) and are subject to change without notice.