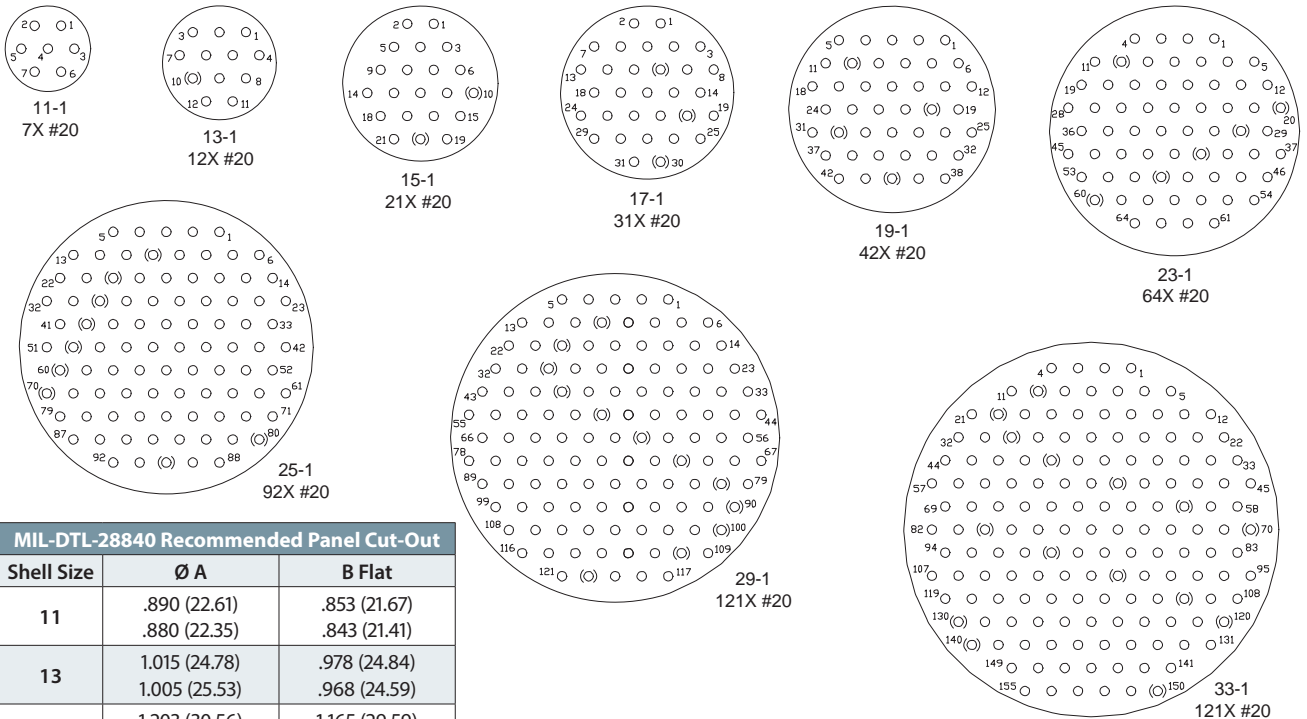


# MIL-STD-1698 Insert Arrangements (Pin Front View) Shell Polarization and Panel Cut-Outs for MIL-DTL-28840 Type Filter Connectors



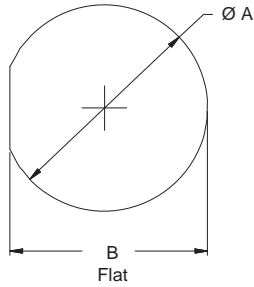
MIL-DTL-28840  
Type

B

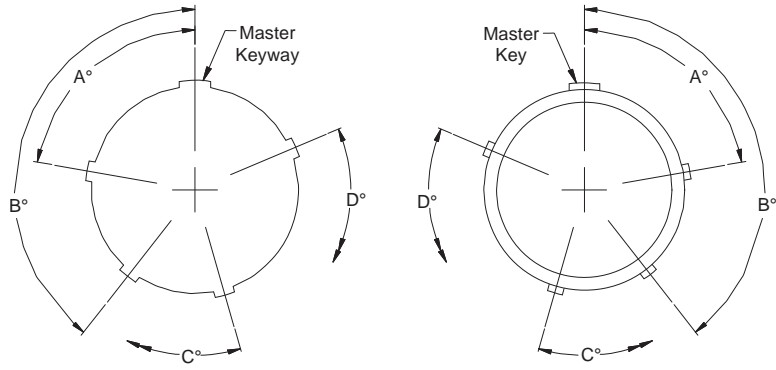


MIL-DTL-28840 Recommended Panel Cut-Out

Shell Size	Ø A	B Flat
11	.890 (22.61)	.853 (21.67)
	.880 (22.35)	.843 (21.41)
13	1.015 (24.78)	.978 (24.84)
	1.005 (25.53)	.968 (24.59)
15	1.203 (30.56)	1.165 (29.59)
	1.193 (30.30)	1.155 (29.34)
17	1.265 (32.13)	1.228 (31.19)
	1.255 (31.88)	1.218 (30.94)
19	1.453 (36.91)	1.415 (35.94)
	1.443 (36.65)	1.405 (35.69)
23	1.640 (41.66)	1.603 (40.72)
	1.630 (41.40)	1.593 (40.46)
25	1.765 (44.83)	1.728 (43.89)
	1.755 (44.58)	1.718 (43.64)
29	1.953 (49.61)	1.915 (48.64)
	1.943 (49.35)	1.905 (48.39)
33	2.140 (54.36)	2.103 (53.42)
	2.130 (54.10)	2.093 (53.16)



Plug



Note: All Minor Keys and Keyways are rotated to provide polarization while Master Key and Keyway remain fixed.

Table II: Alternate Keyways

Shell Size	Keying Position	A° Bsc	B° Bsc	C° Bsc	D° Bsc
11 13	1	95°	141°	208°	236°
	2	113°	156°	182°	292°
	3	90°	145°	195°	252°
	4	53°	156°	220°	255°
	5	119°	146°	176°	298°
	6	51°	141°	184°	242°
15 17	1	80°	142°	196°	293°
	2	135°	170°	200°	310°
	3	49°	169°	200°	244°
	4	66°	140°	200°	257°
	5	62°	145°	180°	280°
	6	79°	153°	197°	272°
19 23 25 29 33	1	80°	142°	196°	293°
	2	135°	170°	200°	310°
	3	49°	169°	200°	244°
	4	66°	140°	200°	257°
	5	62°	145°	180°	280°
	6	79°	153°	197°	272°

Dimensions in inches (millimeters) and are subject to change without notice.

© 2013 Glenair, Inc.

U.S. CAGE Code 06324

Printed in U.S.A.