

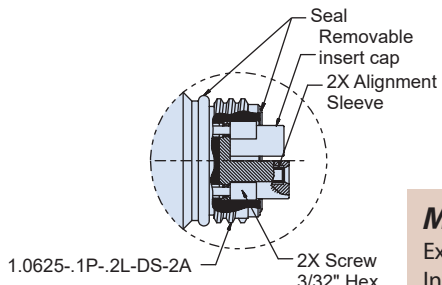
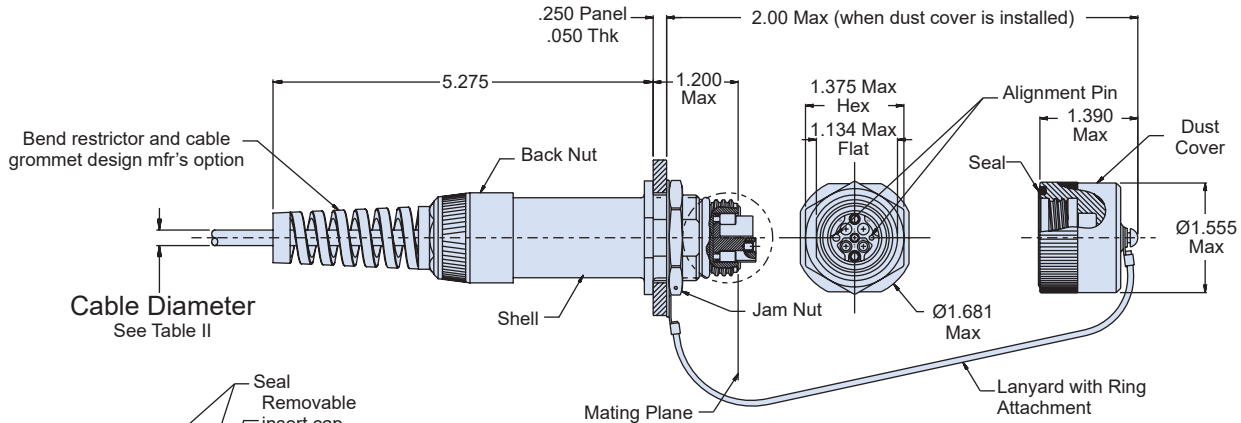
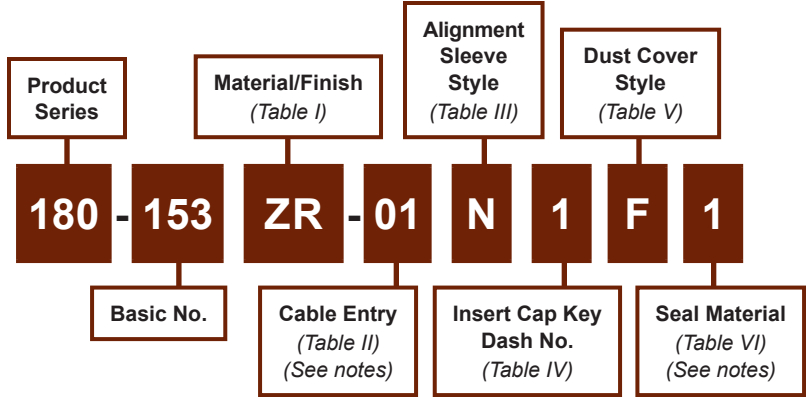


180-153
GFOCA Internal Mount Jam Nut
Receptacle with Strain Relief
MIL-DTL-83526 Type, 4 Channel

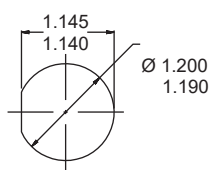


MIL-DTL-83526 type hermaphroditic GFOCA internal mount jam nut receptacle with strain relief

How To Order



Detail A



Panel Cut-out
As viewed from front of panel

Material and Finish

- External hardware: See Table I
- Internal hardware: Al alloy/anodize
- Misc. hardware: Stainless steel/passivate
- Lanyard: Stainless steel/coated
- Strain relief wedge: Copper alloy/nickel
- Seals: See Table VI
- Bend restrictor: Nylon
- Cable grommet: Nitrile

Notes

Connector assembly is designed IAW the interface requirements of MIL-PRF-83526/17 (Draft). Standard configuration is shown in sample part number.

180-153

**GFOCA Internal Mount Jam Nut
Receptacle with Strain Relief
MIL-DTL-83526 Type, 4 Channel**



GFOCA
Fiber Optic System

Table I: Material/Finish

Code	Material	Finish Description
G2	Aluminum alloy	Hard anodize, gray
ZN		Zinc-nickel, olive drab
ZR		Zinc-nickel, black

Refer to Appendix for material/finish details

Table II: Cable Diameter

Dash No.	Cable Diameter	
	Inch	mm
01	.190-.315	4.83-8.00
02	.316-.379	8.03-9.63

Table III: Alignment Sleeve Style

Code	Style
N	None

Consult factory for additional options

Table IV: Insert Cap Key Configurations

Dash No:	1	2	3	4
Config.	<p>Key 1</p>	<p>Key 2</p>	<p>Key 3</p>	<p>Key U (universal)</p>

Table V: Dust Cover Style

Code.	Style
F	Female
H	Hermaphroditic
N	None

Table VI: Seal Material

Dash No.	Seal material(s)
1	Fluorosilicone / Fluorosilicone panel seal
2	Fluorosilicone / Conductive fluorosilicone panel seal