

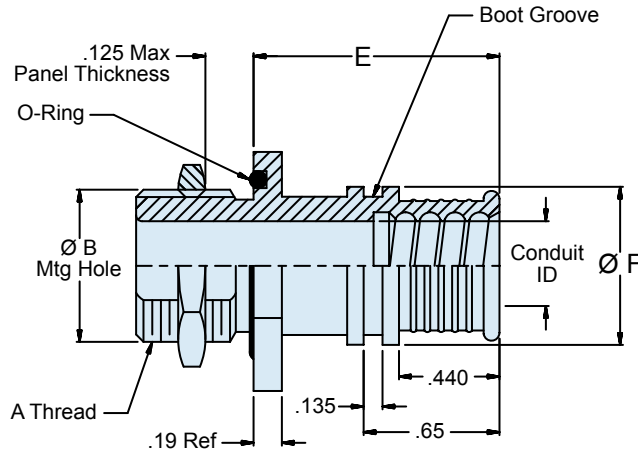
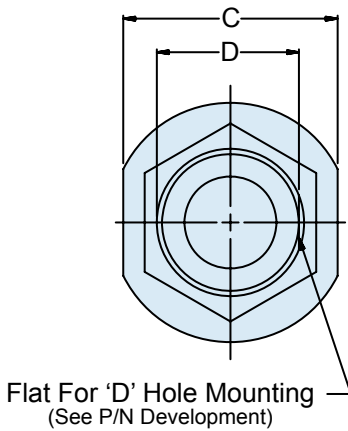
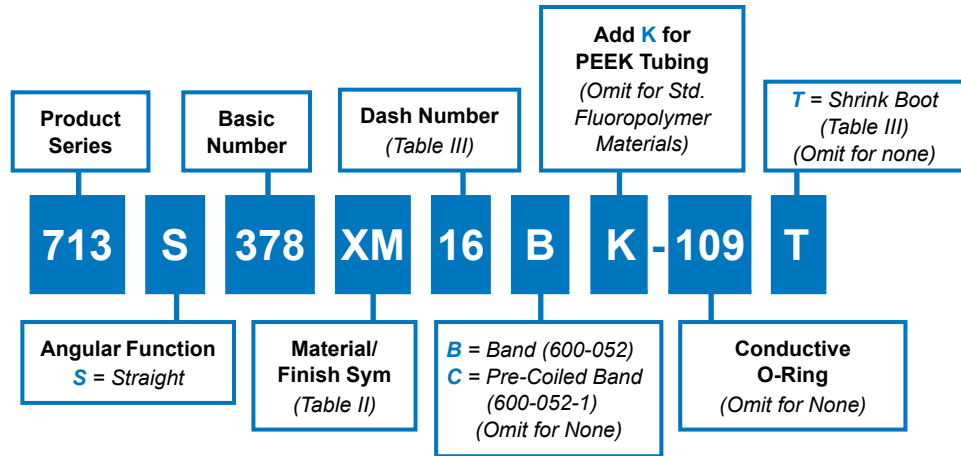


713-378
Hat Trick System
 Environmental Composite Bulkhead Fitting
 with Band Termination for Series 74 Helical Convuluted Tubing

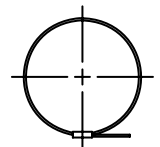
Easy-to-install Hat Trick convoluted tubing-to-bulkhead fitting, composite



How To Order



SYM S - Straight



C Option
Pre-Coiled Band

Material and Finish

- Adapters, Hex Nuts: High grade engineering thermoplastic/see Table II
- O-Ring: Silicone/NA
- Band: SST/Passivate
- Shrink Boot - See individual drawing.

713-378
Hat Trick System
 Environmental Composite Bulkhead Fitting
 with Band Termination for Series 74 Helical Convuluted Tubing



Table III: Dimensions and Shrink Boot

Dash No.	Conduit ID	A Thread Class 2A	Ø B +.015 -.000	C Flat	Ø D +.000 -.015	E Max	Ø F	Shrink Boot Part Number
06	.188 (4.8)	7/16-28 UNEF	.443 (11.3)	.688 (17.5)	.375 (9.5)	.940 (23.9)	.481 (12.2)	770-001S103
09	.281 (7.1)	9/16-24 UNEF	.568 (14.4)	.812 (20.6)	.500 (12.7)	.940 (23.9)	.575 (14.6)	770-001S104
10	.312 (7.9)	9/16-24 UNEF	.568 (14.4)	.812 (20.6)	.500 (12.7)	.940 (23.9)	.611 (15.5)	770-001S104
12	.375 (9.5)	5/8-24 UNEF	.630 (16.0)	.875 (22.2)	.563 (14.3)	.940 (23.9)	.671 (17.0)	770-001S104
14	.437 (11.1)	11/16-24 UNEF	.693 (17.6)	.938 (23.8)	.625 (15.9)	.940 (23.9)	.732 (18.6)	770-001S104
16	.500 (12.7)	3/4-20 UNEF	.755 (19.2)	1.000 (25.4)	.688 (17.5)	.940 (23.9)	.811 (20.6)	770-001S105
20	.625 (15.9)	7/8-20 UNEF	.880 (22.4)	1.125 (28.6)	.812 (20.6)	.940 (23.9)	.931 (23.6)	770-001S106
24	.750 (19.1)	1-20 UNEF	1.005 (25.5)	1.250 (31.8)	.938 (23.8)	.940 (23.9)	1.091 (27.7)	770-001S106
28	.875 (22.2)	1 3/16-18 UNEF	1.193 (30.3)	1.438 (36.5)	1.125 (28.6)	1.000 (25.4)	1.234 (31.2)	770-001S107
32	1.000 (25.4)	1 5/16-18 UNEF	1.318 (33.5)	1.562 (39.7)	1.250 (31.8)	1.000 (25.4)	1.382 (35.1)	770-001S107
40	1.250 (31.8)	1 1/2-18 UNEF	1.505 (38.2)	1.812 (46.0)	1.438 (36.5)	1.310 (33.3)	1.726 (43.9)	770-001S108
48	1.500 (31.8)	1 3/4-18 UNS	1.755 (44.6)	2.062 (52.4)	1.688 (42.9)	1.310 (33.3)	2.019 (53.3)	770-001S108
64	2.500 (63.5)	2 1/4-16 UN	2.255 (57.4)	2.750 (69.6)	2.188 (55.6)	1.310 (33.3)	TBD	TBD



Table II: Finish

Sym	Finish Description
XMT	Nickel-PTFE - Grey (1,000 Hour Salt Spray)
XM	Electroless Nickel
XW	Cadmium/Olive Drab Over Electroless Nickel
XB	Black Color/Unplated
XO	No Plating - Base Material Non-Conductive