

# Swing-Arm® Clamps

## Selection Guide



### Series 870 Saddle Clamp



Swing-Arm saddle clamps are available in three materials: corrosion-free composite material, aluminum alloy or stainless steel.

### Series 871 Flex Clamp



Swing-Arm flex clamps feature high-strength PEEK flexible arms with recess to accept band or cable tie.

### Drop-in Banding Adapter



Swing-Arm clamps are available with "drop-in" brass or aluminum banding adapters. Terminate overall shield and individual shields with Band-Master ATS band.

## Series 87 Swing-Arm Clamps



Swing-Arm® clamps provide cable strain relief for mil spec circular electrical connectors including M38999, M83723, and M5015, along with Glenair's Series 80 Mighty Mouse and Series 806 Mil-Aero connectors. Swing-Arms have repositionable arms for straight, 45° or 90° cable positions. Rugged Swing-Arm clamps offer easy installation, long-term performance, weight savings and SKU reduction.

Performance tested to stringent AS85049 mechanical and electrical standards, self-locking Swing-Arm clamps are suitable for high vibration environments including military and commercial aircraft.

- Repositionable arms adjust to straight, 45° and 90°
- Two styles: saddle clamp and flex clamp
- Corrosion-resistant composite, aluminum or stainless steel
- Two shielding options: braid sock or drop-in banding adapter
- -65 to +200 °C operating temperature
- Outstanding weight and SKU reduction

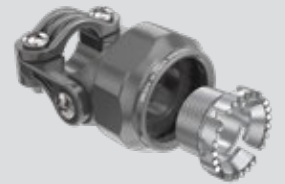
## Series 870 Saddle Clamp Styles



Unshielded



Braid Sock



Drop-In Banding Adapter

## Series 871 Flex Clamp Styles



Unshielded



Braid Sock



Drop-In Banding Adapter

# Swing-Arm® Clamps

## Selection Guide

Adapter Code

# A

AS50151 crimp  
AS95234  
MIL-DTL-26482 Ser. II  
MIL-DTL-83723 Ser. III



SwingArm Saddle Clamp  
Composite/Aluminum/SST  
**870A001**  
Page 87-4



SwingArm Saddle Clamp  
Braid Sock, Composite  
**870A002**  
Page 87-6



SwingArm Saddle Clamp  
Aluminum/SST, Braid Sock  
**870A003**  
Page 87-8



SwingArm Saddle Clamp  
EMI Band Adapter, Composite  
**870A004**  
Page 87-10



SwingArm Saddle Clamp  
EMI Band Adapter, Alum/SST  
**870A005**  
Page 87-12



SwingArm Flex Clamp  
Composite or Aluminum  
**871A001**  
Page 87-14



SwingArm Flex Clamp  
Braid Sock, Composite  
**871A002**  
Page 87-15



SwingArm Flex Clamp  
Braid Sock, Aluminum  
**871A003**  
Page 87-17



SwingArm Flex Clamp  
EMI Band Adapter, Composite  
**871A004**  
Page 87-19



SwingArm Flex Clamp  
EMI Band Adapter, Aluminum  
**871A005**  
Page 87-21

Adapter Code

# F

MIL-DTL-38999  
Series I and II



SwingArm Saddle Clamp  
Composite/Aluminum/SST  
**870F001**  
Page 87-22



SwingArm Saddle Clamp  
Braid Sock, Composite  
**870F002**  
Page 87-24



SwingArm Saddle Clamp  
Aluminum/SST, Braid Sock  
**870F003**  
Page 87-26



SwingArm Saddle Clamp  
EMI Band Adapter, Composite  
**870F004**  
Page 87-28



SwingArm Saddle Clamp  
EMI Band Adapter, Alum/SST  
**870F005**  
Page 87-30



SwingArm Flex Clamp  
Composite or Aluminum  
**871F001**  
Page 87-32



SwingArm Flex Clamp  
Braid Sock, Composite  
**871F002**  
Page 87-33



SwingArm Flex Clamp  
Braid Sock, Aluminum  
**871F003**  
Page 87-35



SwingArm Flex Clamp  
EMI Band Adapter, Composite  
**871F004**  
Page 87-37



SwingArm Flex Clamp  
EMI Band Adapter, Aluminum  
**871F005**  
Page 87-39

Adapter Code

# H

MIL-DTL-38999  
Series III and IV



SwingArm Saddle Clamp  
Composite/Aluminum/SST  
**870H001**  
Page 87-40



SwingArm Saddle Clamp  
Braid Sock, Composite  
**870H002**  
Page 87-42



SwingArm Saddle Clamp  
Aluminum/SST, Braid Sock  
**870H003**  
Page 87-44



SwingArm Saddle Clamp  
EMI Band Adapter, Composite  
**870H004**  
Page 87-46



SwingArm Saddle Clamp  
EMI Band Adapter, Alum/SST  
**870H005**  
Page 87-48



SwingArm Flex Clamp  
Composite or Aluminum  
**871H001**  
Page 87-50



SwingArm Flex Clamp  
Braid Sock, Composite  
**871H002**  
Page 87-51



SwingArm Flex Clamp  
Braid Sock, Aluminum  
**871H003**  
Page 87-53



SwingArm Flex Clamp  
EMI Band Adapter, Composite  
**871H004**  
Page 87-55



SwingArm Flex Clamp  
EMI Band Adapter, Aluminum  
**871H005**  
Page 87-57

# Swing-Arm® Clamps

## Selection Guide

Adapter Code

**M**

**Series 80  
Mighty Mouse**



SwingArm Saddle Clamp  
Composite/Aluminum/SST  
**870M001**  
Page 87-58



SwingArm Saddle Clamp  
Braid Sock, Composite  
**870M002**  
Page 87-60



SwingArm Saddle Clamp  
Aluminum/SST, Braid Sock  
**870M003**  
Page 87-62



SwingArm Saddle Clamp  
EMI Band Adapter, Composite  
**870M004**  
Page 87-64



SwingArm Saddle Clamp  
EMI Band Adapter, Alum/SST  
**870M005**  
Page 87-66



SwingArm Flex Clamp  
Composite or Aluminum  
**871M001**  
Page 87-68



SwingArm Flex Clamp  
Braid Sock, Composite  
**871M002**  
Page 87-69



SwingArm Flex Clamp  
Braid Sock, Aluminum  
**871M003**  
Page 87-71



SwingArm Flex Clamp  
EMI Band Adapter, Composite  
**871M004**  
Page 87-73



SwingArm Flex Clamp  
EMI Band Adapter, Aluminum  
**871M005**  
Page 87-75

Adapter Code

**V**

**Series 806  
Mil-Aero**



SwingArm Saddle Clamp  
Composite/Aluminum/SST  
**870V001**  
Page 87-76



SwingArm Saddle Clamp  
Braid Sock, Composite  
**870V002**  
Page 87-78



SwingArm Saddle Clamp  
Aluminum/SST, Braid Sock  
**870V003**  
Page 87-80



SwingArm Saddle Clamp  
EMI Band Adapter, Composite  
**870V004**  
Page 87-82



SwingArm Saddle Clamp  
EMI Band Adapter, Alum/SST  
**870V005**  
Page 87-84



SwingArm Flex Clamp  
Composite or Aluminum  
**871V001**  
Page 87-86



SwingArm Flex Clamp  
Braid Sock, Composite  
**871V002**  
Page 87-87



SwingArm Flex Clamp  
Braid Sock, Aluminum  
**871V003**  
Page 87-89



SwingArm Flex Clamp  
EMI Band Adapter, Composite  
**871V004**  
Page 87-91



SwingArm Flex Clamp  
EMI Band Adapter, Aluminum  
**871V005**  
Page 87-93