

Series 66 Protective Covers

for MIL-DTL-38999 Series I Connectors

667-467 ProSeal™ Flip Lid Receptacle Cover

M38999/I Receptacle Cover



Spring-loaded, waterproof. ProSeal™ flip lid fits MIL-DTL-38999 Series I scoop-proof bayonet receptacles. Fits standard connector jam nut or square flange mounting holes. Snap lid onto connector face for dust-tight and water-tight seal (IP67 rating). Lid remains in open position when fully raised. -40 to +120 °C.

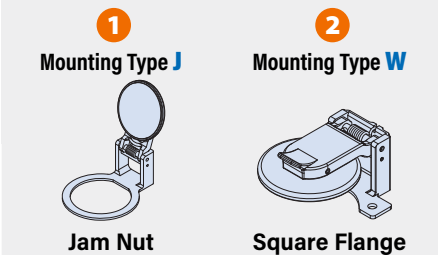
TABLE 1 BRACKET FINISH

C	Black Anodize
M	Electroless Nickel
NF	Olive Drab Cadmium
MT	Nickel-PTFE
ZR	Black Zinc-Nickel
TZ	Tin-Zinc

MATERIALS AND FINISHES

Lid, lever arm, gimbal: thermoplastic, black
 Bracket: aluminum, plated per finish code
 Spring, pin, rivet: SST/passivate
 Sleeve: Delrin
 Gasket: silicone
 Conductive gasket: silver-filled silicone

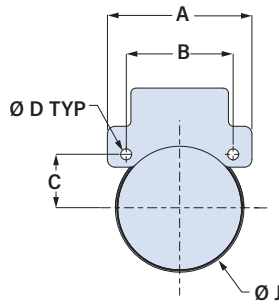
MOUNTING TYPE



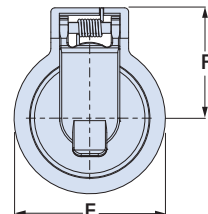
PART NUMBER

		667-467	M	17	T0	W	-59
Base P/N	667-467						
Bracket Finish	See Table 1						
Shell Size	09 11 13 15 17 19 21 23 25						
Panel Thickness	Panel Thickness Code	Square Flange		Jam Nut			
	T0	Front Mount		N/A			
	T1	.062 ± .030 (1.6 ± 0.8)		.062 ± .030 (1.6 ± 0.8)			
	T2	.125 ± .030 (3.2 ± 0.8)		N/A			
Mounting Type	J	Jam Nut (fig. 1)					
	W	Square Flange (fig. 2)					
Modification Code	Omit for standard silicone gasket						
	-59	Silver-Filled Silicone EMI Gasket					

MOUNTING TYPE W SQUARE FLANGE RECEPTACLE



MOUNTING TYPE J JAM NUT RECEPTACLE



WHEN THE LEVER ARM IS LIFTED TO THE OPEN POSITION, IT WILL REMAIN OPEN AT APPROXIMATELY 105° FROM RECEPTACLE FACE.

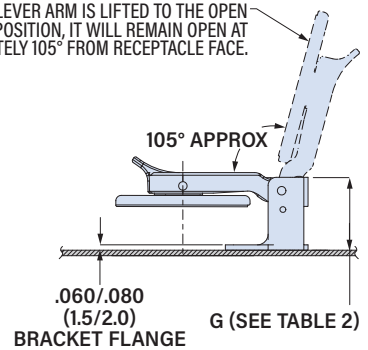


TABLE 2 G DIMENSION

Panel Thickness Code	Shell Size	G Dim. ± .06 (1.5)		B	C	D	E	F Max	J Max						
		Type J	Type W												
		Jam Nut	Square Flange												
		In.	mm.	In.	mm.	In.	mm.	In.	mm.						
09		.937	23.8	.719	18.3	.360	9.1	.128	3.3	1.031	26.2	.841	21.4	.727	18.5
11		1.031	26.2	.812	20.6	.406	10.3	.128	3.3	1.125	28.6	.903	22.9	.853	21.7
13		1.126	28.6	.906	23.0	.453	11.5	.128	3.3	1.375	34.9	1.028	26.1	1.003	25.5
15		1.220	31.0	.969	24.6	.485	12.3	.128	3.3	1.560	39.6	1.113	28.3	1.128	28.7
17		1.311	33.3	1.062	27.0	.531	13.5	.128	3.3	1.625	41.3	1.149	29.2	1.253	31.8
19		1.437	36.5	1.156	29.4	.578	14.7	.128	3.3	1.750	44.5	1.365	34.7	1.360	34.5
21		1.563	39.7	1.250	31.8	.625	15.9	.128	3.3	2.000	50.8	1.429	36.3	1.485	37.7
23		1.689	42.9	1.375	34.9	.688	17.5	.128	3.3	2.150	54.6	1.491	37.9	1.610	40.9
25		1.841	46.8	1.500	38.1	.750	19.1	.128	3.3	2.218	56.3	1.656	42.1	1.735	44.1