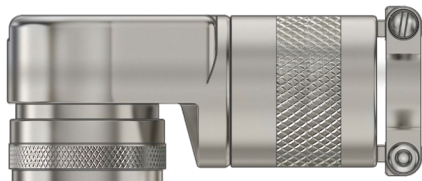


# Series 44 Banding Backshells

for AS50151 Crimp, M26482 Series II, M83723 Series III, AS95234

## 447AC659 Banding Backshell, Shrouded Low Profile 90°



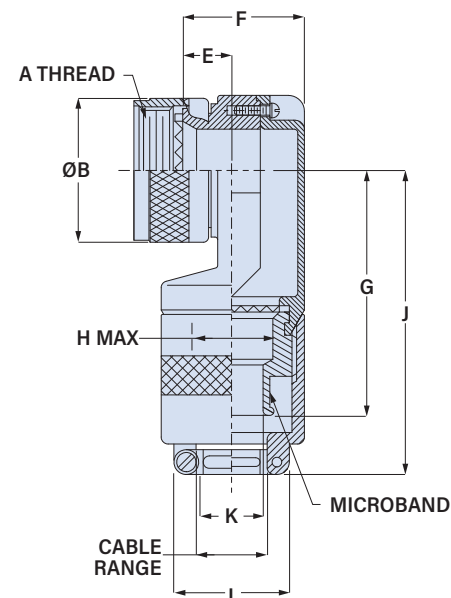
**"Band-in-a-Can" shield termination. Low profile. Saddle clamp.** 447AC659 banding backshell fits AS50151 crimp (MS3450), AS95234, MIL-DTL-26482 Series II, MIL-DTL-83723 Series III connectors. "Cobra" style split construction with screw-on lid for easy wire routing. Terminate cable braid shield to banding platform with micro band strap. Saddle clamp provides cable strain relief. Aluminum. Saddle clamp hardware is passivated SST.

**Adapter Code **A****  
 AS50151 crimp, AS95234, MIL-DTL-26482 Ser. II, MIL-DTL-83723 Ser. III

**BAND**  
 Terminate cable braid to backshell with optional pre-coiled banding strap. Glenair's Band-Master ATS® banding system provides quick, easy, cost-effective and highly reliable termination of braid shield. Stainless steel.



Entry Sizes	Pre-Coiled Band P/N	Length
10 - 16	<b>601-061</b>	8.13 (206)
18 - 20	<b>601-065</b>	14.25 (362)



**PART NUMBER**

<b>Base P/N</b>	<b>447AC659</b>	<b>M</b>	<b>18</b>	<b>14</b>	<b>K</b>																																													
<b>Material/Finish</b>	<b>M</b> Alum/ Electroless Nickel <b>MT</b> Alum/ Nickel-PTFE <b>NF</b> Alum/ Olive Drab Cadmium <b>ZR</b> Alum/ Black Zinc-Nickel <b>TZ</b> Alum/ Tin-Zinc																																																	
<b>Shell Size</b>	<b>08 10 12 14 16 18 20 22 24</b>																																																	
<b>Entry Size</b>	<table border="1"> <thead> <tr> <th rowspan="2">Entry Size</th> <th colspan="4">Cable Range</th> <th rowspan="2">Shell Sizes</th> </tr> <tr> <th colspan="2">Inches</th> <th colspan="2">mm</th> </tr> </thead> <tbody> <tr> <td><b>10</b></td> <td>.130</td> <td>.250</td> <td>3.3</td> <td>6.4</td> <td>08-24</td> </tr> <tr> <td><b>12</b></td> <td>.250</td> <td>.380</td> <td>6.4</td> <td>9.7</td> <td>10-24</td> </tr> <tr> <td><b>14</b></td> <td>.310</td> <td>.440</td> <td>7.9</td> <td>11.2</td> <td>14-24</td> </tr> <tr> <td><b>16</b></td> <td>.375</td> <td>.630</td> <td>9.5</td> <td>16.0</td> <td>16-24</td> </tr> <tr> <td><b>18</b></td> <td>.560</td> <td>.690</td> <td>14.2</td> <td>17.5</td> <td>22-24</td> </tr> <tr> <td><b>20</b></td> <td>.630</td> <td>.750</td> <td>16.0</td> <td>19.1</td> <td>22-24</td> </tr> </tbody> </table>	Entry Size	Cable Range				Shell Sizes	Inches		mm		<b>10</b>	.130	.250	3.3	6.4	08-24	<b>12</b>	.250	.380	6.4	9.7	10-24	<b>14</b>	.310	.440	7.9	11.2	14-24	<b>16</b>	.375	.630	9.5	16.0	16-24	<b>18</b>	.560	.690	14.2	17.5	22-24	<b>20</b>	.630	.750	16.0	19.1	22-24			
Entry Size	Cable Range				Shell Sizes																																													
	Inches		mm																																															
<b>10</b>	.130	.250	3.3	6.4	08-24																																													
<b>12</b>	.250	.380	6.4	9.7	10-24																																													
<b>14</b>	.310	.440	7.9	11.2	14-24																																													
<b>16</b>	.375	.630	9.5	16.0	16-24																																													
<b>18</b>	.560	.690	14.2	17.5	22-24																																													
<b>20</b>	.630	.750	16.0	19.1	22-24																																													
<b>Band</b>	Omit if not required <b>K</b> Pre-Coiled Band Included With Backshell																																																	

Shell Size	A Thread Class 2B	øB Max in mm	E Max. in mm	F Max. in mm	G Max. in mm	H Max. in mm	J Max. in mm	Max Entry Size
<b>08</b>	0.500-20 UNF	.65 16.5	.34 8.6	.681 17.3	1.62 41.1	.25 6.4	2.12 53.8	<b>10</b>
<b>10</b>	0.625-24 UNEF	.77 19.6	.27 6.9	.731 18.6	1.78 45.2	.38 9.5	2.28 57.9	<b>12</b>
<b>12</b>	0.750-20 UNEF	.94 23.9	.27 6.9	.731 18.6	1.78 45.2	.38 9.5	2.28 57.9	<b>12</b>
<b>14</b>	0.875-20 UNEF	1.02 25.9	.28 7.1	.831 21.1	1.85 47.0	.50 12.7	2.35 59.7	<b>14</b>
<b>16</b>	1.000-20 UNEF	1.21 30.7	.42 10.7	.981 24.9	1.90 48.3	.63 15.9	2.40 61.0	<b>16</b>
<b>18</b>	1.0625-18 UNEF	1.23 31.2	.64 16.3	1.181 30.0	1.93 49.0	.63 15.9	2.43 61.7	<b>16</b>
<b>20</b>	1.1875-18 UNEF	1.36 34.5	.64 16.3	1.181 30.0	1.93 49.0	.63 15.9	2.43 61.7	<b>16</b>
<b>22</b>	1.3125-18 UNEF	1.48 37.6	.54 13.7	1.181 30.0	2.08 52.8	.75 19.1	2.58 65.5	<b>20</b>
<b>24</b>	1.4375-18 UNEF	1.73 43.9	.54 13.7	1.181 30.0	2.08 52.8	.75 19.1	2.58 65.5	<b>20</b>

Entry Size	ø K		L Max in mm	Cable Range		Shell Sizes
	±.03 (0.8) in	mm		Inches	mm	
<b>10</b>	.22	5.6	1.00 25.4	.130 .250	3.3 6.4	08-24
<b>12</b>	.31	7.9	1.25 31.8	.250 .380	6.4 9.7	12-24
<b>14</b>	.44	11.2	1.34 34.0	.310 .440	7.9 11.2	14-24
<b>16</b>	.56	14.2	1.47 37.3	.375 .630	9.5 16.0	16-24
<b>18</b>	.63	16.0	1.56 38.1	.560 .690	14.2 17.5	22-24
<b>20</b>	.75	19.1	1.62 41.1	.630 .750	16.0 19.1	22-24