

Series 42 LFMC Conduit Adapters

Selection Guide

Series 42 LFMC Conduit Adapters

Series 42 LFMC conduit adapters fit standard mil spec circular electrical connectors. These adapters are compatible with Liquid-tight Flexible Metal Conduit (LFMC), including Sealtite® Type UA. Grounding ferrule slips over conduit end. When adapter nut is tightened, ferrule compresses onto metal conduit core and jacket for grounding and environmental sealing.

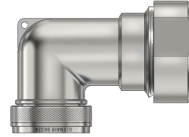


- Use with Liquid-tight Flexible Metal Conduit (LFMC)
- Compression ferrule provides secure grounding and watertight seal

Adapter Code

A

AS50151 crimp
AS95234
MIL-DTL-26482 Ser. II
MIL-DTL-83723 Ser. III

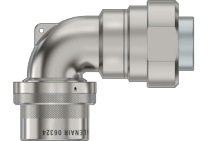


LFMC Conduit Adapter,
Spin Coupling
420A*001
Page 40-2

Adapter Code

B

AS50151 Solder

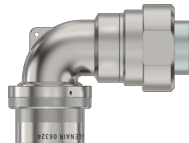


LFMC Conduit Adapter,
Direct Coupling
420B*002
Page 40-4

Adapter Code

D

MIL-DTL-26482
Series I



LFMC Conduit Adapter,
Direct Coupling
420D*002
Page 40-6

Adapter Code

F

MIL-DTL-38999
Series I and II

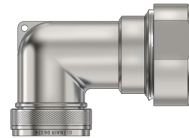


LFMC Conduit Adapter,
Spin Coupling
420F*001
Page 40-8

Adapter Code

H

MIL-DTL-38999
Series III and IV



LFMC Conduit Adapter,
Spin Coupling
420H*001
Page 40-10