

Series 39 EMI+Environmental Backshells

Selection Guide

Series 39 EMI+Environmental Backshells



Series 39 EMI+Environmental Backshells protect wiring harnesses from EMI/RFI interference and water ingress. Type F dual ground rings accept individual and overall braid shields. Type H heavy duty saddle clamp has telescoping stainless steel screws, or choose low profile gland nut. Silicone grommet compresses onto cable jacket for watertight seal.

Adapter Code

A

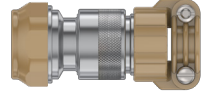
AS50151 crimp
AS95234
MIL-DTL-26482 Ser. II
MIL-DTL-83723 Ser. III



EMI+Environmental
Backshell, Spin Coupling
390A*053
Page 39-2



EMI+Environmental
Backshell, Self-Locking
390A*055
Page 39-4



EMI+Environmental
Backshell, Composite
390A*052
Page 39-6

Adapter Code

B

AS50151 Solder



EMI+Environmental
Backshell, Direct Coupling
390B*002
Page 39-7

Adapter Code

D

MIL-DTL-26482
Series I



EMI+Environmental
Backshell, Direct Coupling
390D*002
Page 39-9

Adapter Code

F

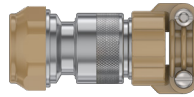
MIL-DTL-38999
Series I and II



EMI+Environmental
Backshell, Spin Coupling
390F*053
Page 39-11



EMI+Environmental
Backshell, Self-Locking
390F*055
Page 39-13



EMI+Environmental
Backshell, Composite
390F*052
Page 39-15

Adapter Code

G

MIL-DTL-28840



EMI+Environmental
Backshell, Spin Coupling
390G*013
Page 39-21

Adapter Code

H

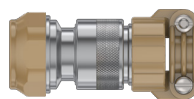
MIL-DTL-38999
Series III and IV



EMI+Environmental
Backshell, Spin Coupling
390H*053
Page 39-16



EMI+Environmental
Backshell, Self-Locking
390H*055
Page 39-18



EMI+Environmental
Backshell, Composite
390H*052
Page 39-20

Adapter Code

P

Series 970
PowerTrip

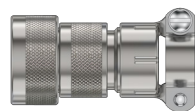


EMI+Environmental
Backshell, Self-Locking
390P*055
Page 39-28

Adapter Code

M

Series 80
Mighty Mouse



EMI+Environmental
Backshell, Direct Coupling
390MS076
Page 39-23

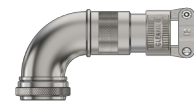


EMI+Environmental
Backshell, Spin Coupling
390M*077
Page 39-24

Adapter Code

V

Series 806
Mil-Aero



EMI+Environmental
Backshell, Self-Locking
390V*091
Page 39-26