

# Series 37 Environmental Backshells

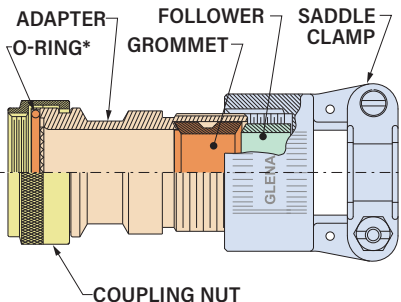
## Selection Guide

### Series 37 Environmental Backshells



Series 37 environmental backshells protect electrical wiring harnesses from water ingress and mechanical strain. For use with unshielded jacketed cable. Strain reliefs include saddle clamp or gland nut. When strain relief is tightened onto backshell, silicone grommet compresses onto cable jacket for a watertight seal.

- Environmental
- Heavy-duty saddle clamp with telescoping screws
- Aluminum or stainless steel
- Straight, 45° and 90°
- Silicone cable sealing grommet
- Compatible with standard mil spec circular electrical connectors



\* NO O-RING FOR ADAPTER CODES A, G

Adapter Code

# A

AS50151 crimp  
AS95234  
MIL-DTL-26482 Ser. II  
MIL-DTL-83723 Ser. III



Environmental Backshell,  
Spin Coupling  
**370A\*001**  
Page 37-2

Adapter Code

# B

AS50151 Solder



Environmental Backshell,  
Direct Coupling  
**370B\*002**  
Page 37-4

Adapter Code

# D

MIL-DTL-26482  
Series I



Environmental Backshell,  
Direct Coupling  
**370D\*002**  
Page 37-7

Adapter Code

# E

MIL-DTL-26500



Environmental Backshell,  
Direct Coupling  
**370E\*002**  
Page 37-9

Adapter Code

# F

MIL-DTL-38999  
Series I and II



Environmental Backshell,  
Spin Coupling  
**370F\*001**  
Page 37-11

Adapter Code

# G

MIL-DTL-28840



Environmental Backshell,  
Spin Coupling  
**370G\*007**  
Page 37-15

Adapter Code

# H

MIL-DTL-38999  
Series III and IV



Environmental Backshell,  
Spin Coupling  
**370H\*001**  
Page 37-13

Adapter Code

# P

Series 970  
PowerTrip

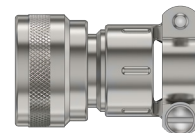


Environmental Backshell,  
Spin Coupling  
**370P\*024**  
Page 37-20

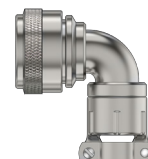
Adapter Code

# M

Series 80  
Mighty Mouse



Environmental Backshell,  
Direct Coupling  
**370MS037**  
Page 37-17



Environmental Backshell,  
Spin Coupling  
**370M\*038**  
Page 37-18