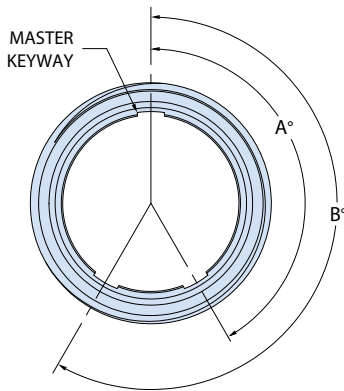




# SeaKing™ Junior Dry-Mate Subsea Connectors



## 707-0498-7 Bulkhead Connector Receptacle (BCR)



ALTERNATE KEY POSITIONS		
Position	A°	B°
N	150°	210°
A	75°	210°
B	95°	230°
C	140°	275°

CURRENT RATINGS	
Contact Size	AMPS
16	13
12	23
8	60
4	100
1/0	175

HOW TO ORDER									
Sample Part Number	707-0498	-7	-52	-36	B8	G	-Z1	P	N
Product Series	707-0498 = Bulkhead Connector Receptacle								
Connector Type	1 = CCP    5 = CCR 6 = FCR    7 = BCR								
Shell Size	See Dimensions table								
Insulator Size	See Dimensions table								
Arrangement	See Insert Arrangements table								
Grommet Designator	G = Grommet Seal Included Leave Blank for No Grommet Seal								
Shell, Nut and Washer Material	Z1 = Stainless Steel, Passivated TA = Titanium with Anodic Coating See Component Materials table								
Insert/Contact Designator	P = Pin Insulator with Pin Contacts Included S = Socket Insulator with Socket Contacts Included A = Pin Insulator Less Pin Contacts B = Socket Insulator Less Socket Contacts								
Polarization	See Polarization table								

INSERT ARRANGEMENTS													
Insert Arr.	Contact Size and Quantity						Insert Arr.	Contact Size and Quantity					
	#16	#12	#8	#4	#1/0	#2/0		#16	#12	#8	#4	#1/0	#2/0
18-2			2				32-12	2		10			
18-4		2	2				32-2					2	
20-3			3				32-20	1	19				
20-4			4				32-3					3	
20-5		2	3				32-4				2	2	
20-7	4		3				32-5				5		
24-1					1		32-6		3			3	
24-2				2			32-7				7		
24-3				3			32-A22		22				
24-5			5				36-16	3		13			
24-6		4		2			36-2					2	
24-A1						1	36-4					4	
24-A6		3		3			36-9	14	14	2	1		
28-12	6		6				36-A8				8		
28-15	15						36-B8	4				4	
28-4				4			40-10	16		9	4		
28-8		1	7				40-21			21			
28-9	5			4			40-5					5	

### NOTES

Electrical rating:

- Voltage: 600 vdc / 425 vac
- Current: see Current Ratings table

Pressure rating

- Mated condition: 1,450 psi (1,000 meters depth)
- Open face: not rated

Contact installation: "crimp and poke" contacts are installed at the cable assembly level. Contacts are provided loose at this level.

Assembly is identified here with "06324 Glenair", part number and date code.

Packaging: product is fitted with dust caps and packaged with packing foam within a cardboard box.

### MATERIAL COMPOSITION

Shell and flange: see part number development

Insulators: glass-reinforced P.E.E.K.

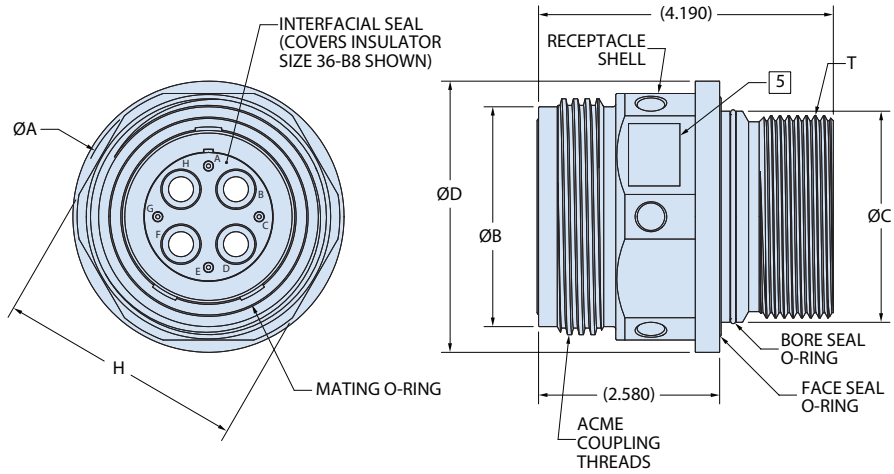
O-ring: nitrile

Interfacial seal and grommet seal: fluorosilicone

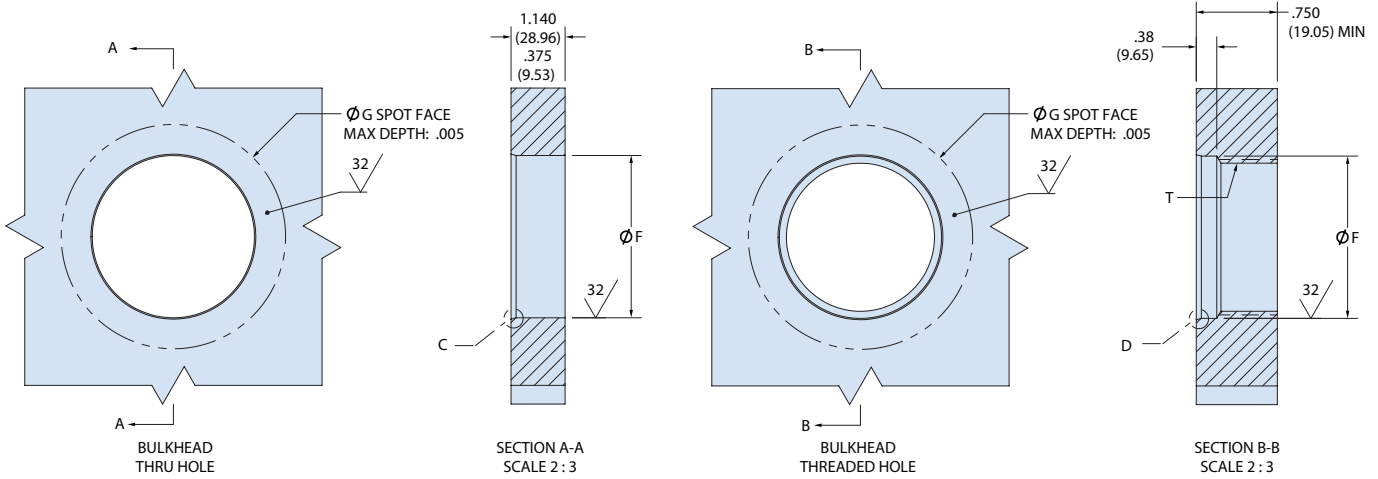


# SeaKing™ Junior Dry-Mate Subsea Connectors

## 707-0498-7 Bulkhead Connector Receptacle (BCR)



DIMENSIONS														
Shell Size	Insulation Size	ØA		ØB		ØC +.002 -.002		ØD		H		Mating O-Ring Size	Bore Seal O-Ring Size	Face Seal O-Ring Size
		inch	mm	inch	mm	inch	mm	inch	mm	inch	mm			
44	28	3.230	82.04	1.620	41.15	2.498	63.45	3.350	85.09	3.000	76.20	2-034	2-036	2-038
48	32	3.480	88.39	2.870	72.90	2.748	69.80	3.600	91.44	3.250	82.55	2-036	2-038	2-040
52	36	3.730	94.74	3.120	79.25	2.998	76.15	3.850	97.79	3.500	88.90	2-038	2-040	2-042
56	40	3.980	101.09	3.370	85.60	3.248	82.50	4.100	104.14	3.750	95.25	2-040	2-042	2-044



BULKHEAD DIMENSIONS					
Shell Size	ØF +.002 -.002		ØG Minimum		T UN-2B Threads
	inch	mm	inch	mm	
44	2.500	63.50	3.400	86.36)	2.375-8
48	2.750	69.85	3.650	92.71)	2.625-8
52	3.000	76.20	3.900	99.06)	2.875-8
56	3.250	82.55	4.150	105.41)	3.125-8

