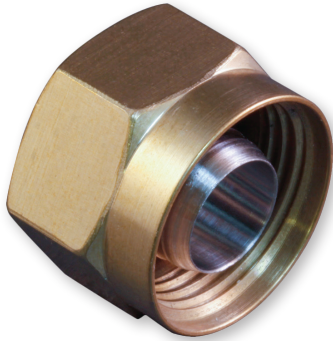


# SERIES 802 2400M / 3500 PSI Ultraminiature Subsea Connectors



## 667-241 and 667-242 3500 PSI Protective covers



**Protect Connectors From Damage** – These covers prevent ingress of water and contamination. Stainless steel plug covers feature Viton® O-rings for 3500 PSI sealing. Receptacle covers are made from marine bronze to minimize galling. For low-pressure IP68 receptacle sealing only, use part number 660-088.

**Polyurethane-Coated SST Wire Rope** offers high strength, excellent abrasion resistance and good flexibility. Or, choose Fluoropolymer jacket for high temperature exposure.

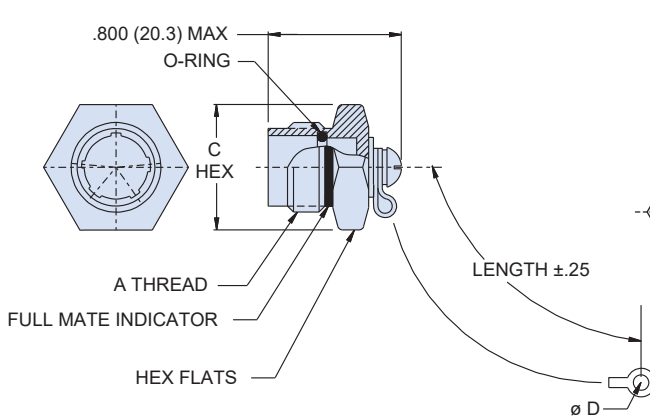
**Braided Nylon Rope** provides excellent flexibility and good abrasion resistance, and can be ordered with slip knot fittings for easy installation on any size cable.

SUBSEA/SHALLOW WATER: AQUAMOUSE™

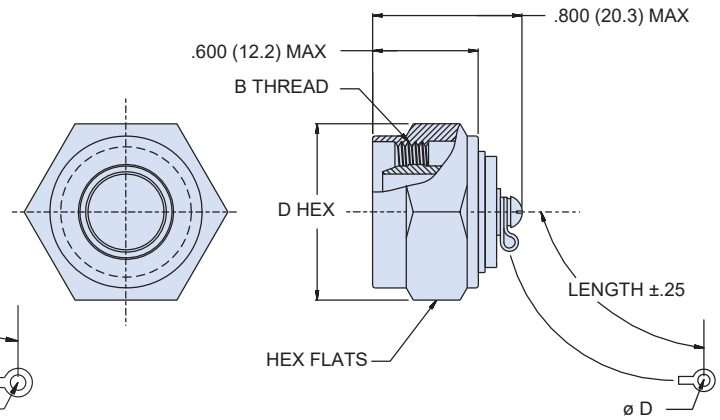
How To Order	
<b>Sample Part Number</b>	<b>667-241</b> <b>-S</b> <b>6</b> <b>03</b> <b>-6</b>
<b>Series</b> (See Table I)	<b>667-241</b> = Plug Cover <b>667-242</b> = Receptacle Cover
<b>Attachment Type</b>	- <b>D</b> = Bead Chain, Cres., Passivate - <b>F</b> = Wire Rope, Nylon Jacket - <b>G</b> = Nylon Rope - <b>H</b> = SST Wire Rope, Fluoropolymer Jacket - <b>N</b> = No Attachment - <b>R</b> = Wire Rope, PVC Jacket - <b>S</b> = SST Sash Chain - <b>T</b> = SST Wire Rope, No Jacket - <b>U</b> = SST Wire Rope, Polyurethane Jacket  "SST" = Stainless Steel
<b>Shell Size</b>	<b>5, 6, 7, 8, 9, 10, 12, 14, 15, 21</b>
<b>Attachment Code</b> (See Table II)	Small Ring = <b>01</b> thru <b>06</b> Solid Ring = <b>14</b> thru <b>33</b>
<b>Attachment Length (inches)</b>	Omit for attachment Type N (No Attachment) Example "-6" equals six inch length

Table I: Cover Style	
<b>667-241</b> High Pressure Plug Cover	<b>667-242</b> High Pressure Receptacle Cover

Table II: Attachment Code	
Omit for attachment Type N (No Attachment)	
 Small Ring	<b>01</b> – .125 (3.2) I.D. <b>02</b> – .140 (3.6) I.D. <b>04</b> – .182 (4.6) I.D. <b>06</b> – .197 (5.0) I.D.
 Solid Ring	<b>14</b> – .385 (9.8) I.D. <b>15</b> – .445 (11.3) I.D. <b>16</b> – .570 (14.5) I.D. <b>17</b> – .635 (16.1) I.D. <b>18</b> – .695 (17.7) I.D. <b>19</b> – .885 (22.5) I.D. <b>20</b> – 1.070 (27.2) I.D. <b>21</b> – 1.135 (28.8) I.D. <b>22</b> – 1.210 (30.7) I.D. <b>23</b> – 1.275 (32.4) I.D. <b>24</b> – 1.530 (38.9) I.D. <b>26</b> – .510 (13.0) I.D. <b>27</b> – .766 (19.5) I.D. <b>28</b> – 1.015 (25.8) I.D. <b>29</b> – .315 (8.0) I.D. <b>30</b> – 1.380 (35.1) I.D. <b>31</b> – .820 (20.8) I.D. <b>32</b> – .265 (6.7) I.D. <b>33</b> – .510 (13.0) I.D.







**667-241 High-Pressure Plug Cover**



**667-242 High-Pressure Receptacle Cover**

667-241 (Plug Cover) Dimensions				
Attachment Code	Shell Size	A Thread	C Hex.	
			In.	mm.
32	5	.4375-28 UNEF-2A	.500	12.70
14	6	.5625-20 UN-2A	.625	15.88
33	7	.6250-20 UN-2A	.688	17.48
16	8	.6875-20 UN-2A	.750	19.05
17	9	.7500-20 UNEF-2A	.812	20.62
17	10	.8125 20 UNEF-2A	.875	22.23
18	12	.8750-20 UNEF-2A	.938	23.83
19	14	1.0625-20 UN-2A	1.125	28.58
26	15	1.1250-20 UN-2A	1.188	30.18
23	21	1.4375-20 UN-2A	1.562	39.67

667-242 (Receptacle Cover) Dimensions				
Attachment Code	Shell Size	B Thread	D Hex	
			In.	mm.
33	5	.4375-28 UNEF-2B	.500	12.70
17	6	.5625-20 UN-2B	.625	15.88
18	7	.6250-20 UN-2B	.688	17.48
27	8	.6875-20 UN-2B	.750	19.05
31	9	.7500-20 UNEF-2B	.812	20.62
19	10	.8125-20 UNEF-2B	.875	22.23
26	12	.8750-20 UNEF-2B	.938	23.83
21	14	1.0625-20 UN-2B	1.125	28.58
22	15	1.1250-20 UN-2B	1.188	30.2
24	21	1.4375-20 UN-2B	1.562	39.7

Table V: Lanyard Options	
 Nylon Rope	-65° to +100°C., black, very flexible, very good abrasion resistance, good resistance to fuels, .120" (3mm) diameter
 Polyurethane Coated Wire Rope	Black polyurethane over stainless steel rope, -65° to +125°C., very flexible, excellent abrasion resistance, excellent resistance to fuels, .080" (2mm) diameter
 Fluoropolymer Jacketed Wire Rope	Translucent FEP jacket over stainless steel rope, -65° to +200°C., fair flexibility, good abrasion resistance, .100" diameter
 Sash Chain	Stainless steel, #8 chain, .240" (6mm)

**NOTES**

**Materials and Finishes**

- Plug Cover: 316 Stainless Steel
- Receptacle Cover: Nickel-Aluminum-Bronze.
- Receptacle Shell: 316 Stainless Steel
- Plug O-Ring: Viton

