

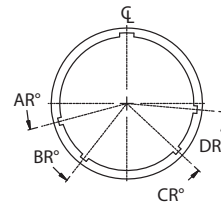
MIL-DTL-38999 Series III Type

233-263 Bulkhead feed-thru with 10G High-Speed Contacts

Part Number Development	
Sample Part Number	233-263 -H7 ZL 25 -7 S N -2
Series - Basic Part No.	233-263 = SuperNine Hermetic High-Speed Bulkhead Feedthru
Connector Style*	H2 = Square Flange Mount H7 = Jam-Nut Mount DH7 = Dual O-ring Jam-Nut Mount H8 = Weld Mount
Material/Finish	Z1 = 300 Series CRES; Passivated ZL = 300 Series CRES; Electroless Nickel
Shell Size	11, 19, 21, 25
Insert Arrangement	See Insert Arrangement Table
Module Type	P = Pin S = Socket A = Connector Less Contacts
Alternate Polarization	A, B, C, D, E, N = Normal (IAW MIL-DTL-38999 Series III); see alternate keyway positions table.
Panel Thickness	2 = .250



Receptacle, Alternate Keyway Positions

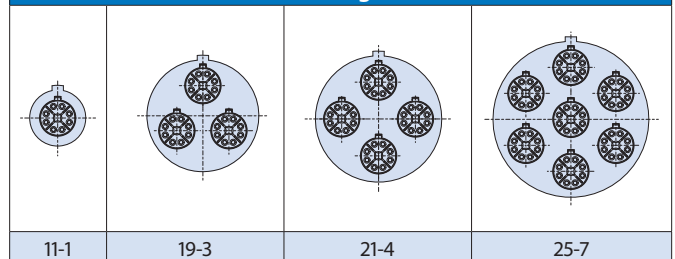


Shell Size Code	Shell Size	Alternate Position Code	AR°	BR°	CR°	DR°
B	11	N	95	141	208	236
		A	113	156	182	292
		B	90	145	195	252
		C	53	156	220	255
		D	119	146	176	298
		E	51	141	184	242
F G J	19 21 25	N	80	142	196	293
		A	135	170	200	310
		B	49	169	200	244
		C	66	140	200	257
		D	62	145	180	280
		E	79	153	197	272

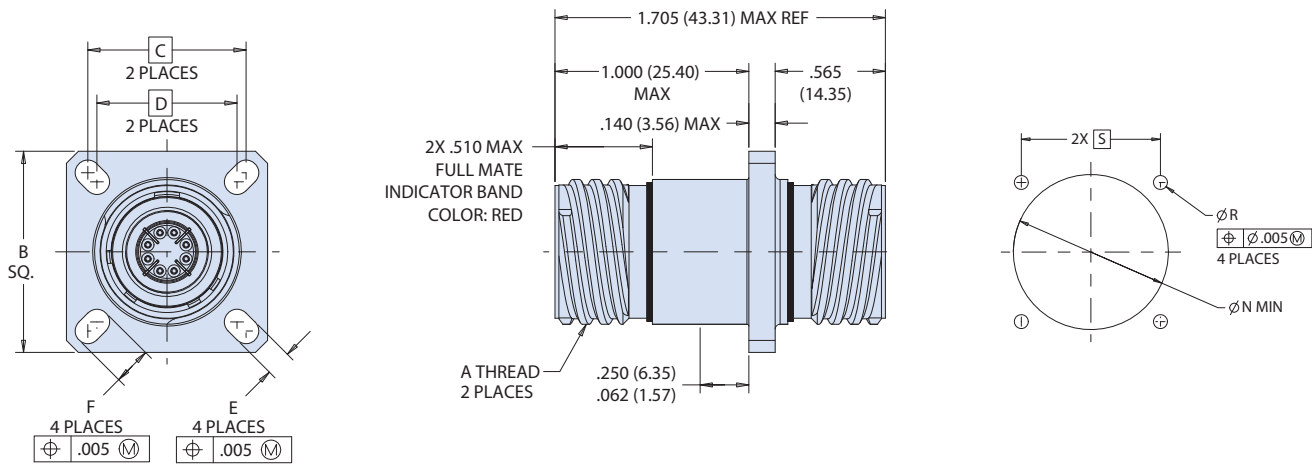
NOTES

- Contact factory for other plating options
- SpeedMaster insert arrangements are exclusive to SpeedMaster™ and are unrelated to other insert patterns of the same name
- Glenair 233-263 is only designed to mate with Glenair 233-219-G6 connector of the same shell size, polarization, and opposite gender
- Hermeticity: less than 1×10^{-7} ccHe/sec at 1 atmosphere differential.
- 233-263 connector is only available as pin to socket or socket to pin
- Contacts are non removable
- Material / Finish
 - Shell and jam-nut: CRES/passivate or CRES/nickel plate
 - Contacts pin: nickel/iron alloy/gold
 - Contacts sockets: copper alloy/gold
 - Insulator hermetic: full glass/N.A
 - Insulator socket: high grade dielectric/N.A
 - Grounding members: copper alloy/electroless nickel
 - Seals: fluorosilicone blend/N.A.

Insert Arrangements



H2 - SQUARE FLANGE MOUNT BULKHEAD FEED-THRU

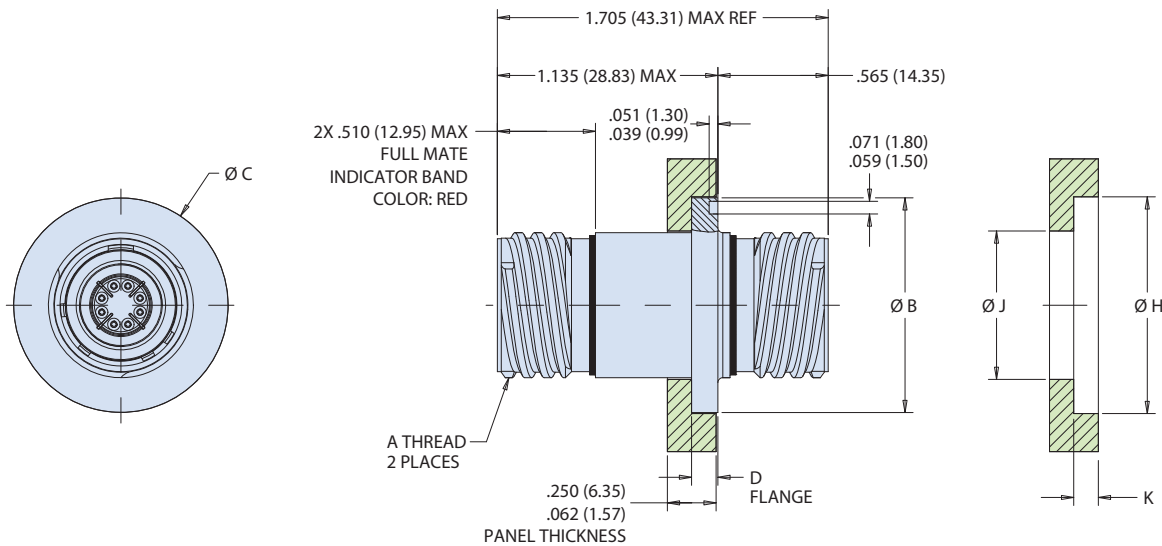


Square Flange Mount Dimensions								
Shell Size	A THREAD	B	C Basic	D Basic	E	F	ØR Holes	S Basic
11	.7500-.1P-.3L-TS-2A	1.040 (26.42) 1.016 (25.81)	0.812 (20.62)	0.719 (18.26)		0.198 (5.03) 0.190 (4.83)		0.812 (20.62)
19	1.2500-.1P-.3L-TS-2A	1.449 (36.80) 1.425 (36.20)	1.156 (29.36)	1.062 (26.97)	0.136 (3.45) 0.120 (3.05)	0.202 (5.13) 0.186 (4.72)	0.133 (3.38) 0.123 (3.12)	1.156 (29.36) 1.250 (31.75)
21	1.3750-.1P-.3L-TS-2A	1.575 (40.00) 1.551 (39.40)	1.250 (31.75)	1.156 (29.36)				
25	1.6250-.1P-.3L-TS-2A	1.823 (46.30) 1.799 (45.69)	1.500 (38.10)	1.375 (34.92)	0.162 (4.11) 0.146 (3.71)	0.250 (6.35) 0.234 (5.94)	0.155 (3.94) 0.145 (3.68)	1.500 (38.10)

MIL-DTL-38999 Series III Type

233-263 Bulkhead feed-thru with 10G High-Speed Contacts

H8 - WELD MOUNT BULKHEAD FEED-THRU



HERMETIC CONNECTORS

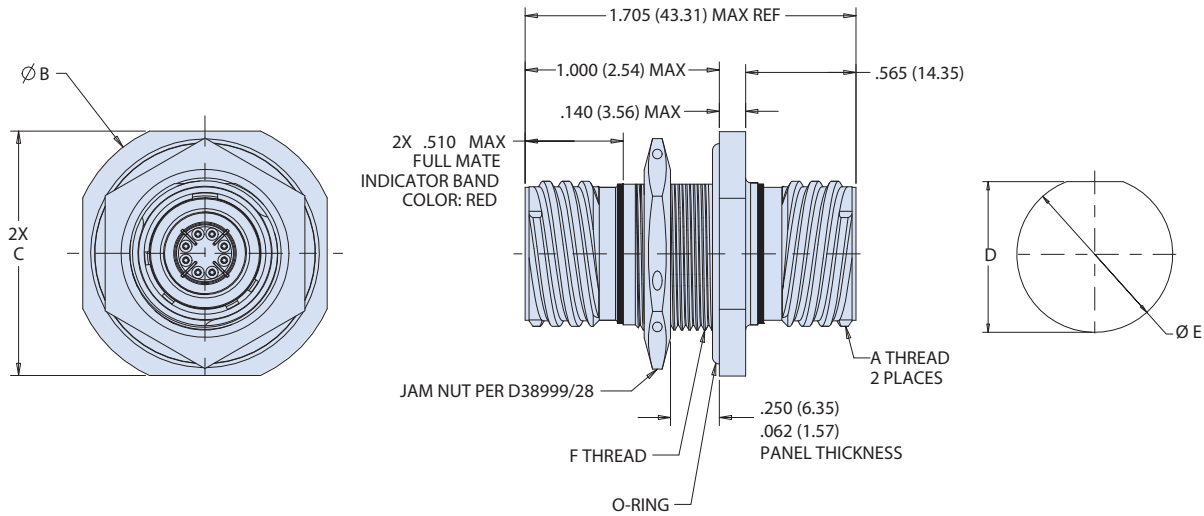
Weld Mount Dimensions								
Shell Size	A Thread	B	C	D	$\varnothing H$	$\varnothing J$	$\varnothing K \pm .005 (0.13)$	
11	.7500-.1P-.3L-TS-2A	1.063 (27.00)	1.106 (28.09)	0.134 (3.40)	1.112 (28.24)	.760 (19.30)	.126 (3.20)	
		1.051 (26.70)	1.094 (27.79)		1.107 (28.12)			
19	1.2500-.1P-.3L-TS-2A	1.547 (39.29)	1.591 (40.41)		0.118 (3.00)	1.597 (40.56)		1.260 (32.00)
		1.535 (38.99)	1.579 (40.11)			1.592 (40.44)		
21	1.3750-.1P-.3L-TS-2A	1.689 (42.90)	1.732 (43.99)	0.165 (4.19)	1.738 (44.15)	1.385 (35.18)		
		1.677 (42.60)	1.720 (43.69)		1.733 (44.02)			
25	1.6250-.1P-.3L-TS-2A	1.941 (49.30)	1.984 (50.39)		0.149 (3.78)	1.990 (50.55)	1.635 (41.53)	
		1.929 (49.00)	1.972 (50.09)			1.985 (50.42)		

MIL-DTL-38999 Series III Type

233-263 Bulkhead feed-thru with 10G High-Speed Contacts

HERMETIC CONNECTORS

H7 - JAM-NUT MOUNT BULKHEAD FEED-THRU



Jam-Nut Mount Dimensions				
Shell Size	A Thread	$\varnothing B$	C Max	F Thread
11	.7500-.1P-.3L-TS-2A	1.375 (34.92)	1.252 (31.80)	M20x1.0-6g 0.100R
19	1.2500-.1P-.3L-TS-2A	1.937 (49.20)	1.811 (46.00)	M35x1.0-6g 0.100R
21	1.3750-.1P-.3L-TS-2A	2.063 (52.40)	1.937 (49.20)	M38x1.0-6g 0.100R
25	1.6250-.1P-.3L-TS-2A	2.311 (58.70)	2.189 (55.60)	M44x1.0-6g 0.100R

Dual O-Ring Jam-Nut Mount Dimensions				
Shell Size	A Thread	$\varnothing B$	C Max	F Thread
11	.7500-.1P-.3L-TS-2A	1.625 (41.28)	1.500 (38.10)	M20x1.0-6g 0.100R
19	1.2500-.1P-.3L-TS-2A	2.189 (55.60)	2.063 (52.40)	M35x1.0-6g 0.100R
21	1.3750-.1P-.3L-TS-2A	2.311 (58.70)	2.189 (55.60)	M38x1.0-6g 0.100R
25	1.6250-.1P-.3L-TS-2A	2.625 (66.68)	2.400 (60.96)	M44x1.0-6g 0.100R

Jam-Nut Panel Cut-Out Dimensions		
SHELL SIZE	$\varnothing D$	E FLAT
11	0.835 (21.21)	0.771 (19.58)
	0.825 (20.96)	0.761 (19.33)
19	1.395 (35.43)	1.335 (33.91)
	1.385 (35.18)	1.325 (33.65)
21	1.520 (38.61)	1.460 (37.08)
	1.510 (38.35)	1.450 (36.83)
25	1.770 (44.96)	1.710 (43.43)
	1.760 (44.70)	1.700 (43.18)