



REVERSE-BAYONET Super ITS-MB Seacrow™ Marine Bronze Connectors



How to order



Super ITS-MB Seacrow advanced durability reverse-bayonet signal / power connectors

Super ITS-MB Seacrow connectors are precision-machined, reverse-bayonet interconnects with improved 1000 hr salt spray and 2000 mating cycle durability. VG95234 compliant. Accommodates wires from 32 AWG to 4/0. Available backshell options are suited for the broad range of above-deck shipboard and other harsh naval application environments. IP67 standard with IP68 available on request.

SUPER ITS: HARSH ENVIRONMENT

How To Order												
SAMPLE PART NUMBER	FR	ITB	G	41	00	R		20-27	P	Y	B1	MB
Elastomer Option	OMIT for polychloroprene FR = Fire resistant elastomer S = Silicone elastomer V = Viton elastomer											
Series Designator	ITS = Plug ITB = Receptacle											
Plug Grounding Fingers	G = Plug grounding fingers; plug only											
Contact Type	31 = Solder 41 = Crimp											
Shell Style*	See shell style options table											
Class Type*	See class options table											
Mounting Holes	FP = Through-holes Omit for threaded holes Option only available for wall mount shell styles 03, 030, and 038											
Shell Size/Insert Arrangement	See Appendix											
Contact Gender	P = Pin S = Socket											
Polarization	W, X, Y, Z insert rotations, see Appendix											
Contact Options	See contact options table											
Accessory Option**	NØ = No accessory; see accessory options											
Material / Finish Option	MB = Marine Bronze											

* Class type will automatically default to "A" if accessory option NØ is selected.

** Refer to shell style / class availability matrix below



REVERSE-BAYONET Super ITS-MB Seacrow™ Marine Bronze Connectors



How to order

Shell Style / Class Matrix									
Shell Style	Class								
	R	AR	F	GR	GS	RS	SP	KG	Y
ITB 00	✓		✓	✓		✓	✓		
ITB 01	✓		✓	✓		✓	✓	✓	
ITB 02	✓								✓
ITB 03	✓								✓
ITB 030	✓		✓	✓		✓	✓		
ITB 038	✓								
ITB 07	✓								
ITB 070		✓		✓					
ITB 078	✓								
ITS 26	✓								
ITS 06	✓		✓	✓		✓	✓	✓	
ITS 08	✓		✓	✓	✓		✓		

Plug and Receptacle Shell Style Options	
Sym	Description
00	Front panel mount, wall mount receptacle
01	Inline cable receptacle connector
02	Front panel mount, box mount receptacle with through-holes; no accessory threads
02PP	Front panel mount, wall mount bulkhead feed-through with threaded holes
03 ¹	Rear panel mount, box mount receptacle; No accessory threads
030 ¹	Rear panel mount, wall mount receptacle
038 ¹	Rear panel mount, wall mount receptacle and right angle adapter
07	Rear panel mount, jam-nut receptacle; no accessory threads
070	Rear panel mount, jam-nut receptacle with accessory threads
078	Rear panel mount, jam-nut receptacle with 90° adapter
06	Inline cable plug connector
08 ²	Inline cable plug with 90° adapter
26	Panel mount plug; no accessory threads

Class Options	
Code	Description
A	Non-environmental; without grommet
R	Environmental backshell with sealed insulator and wire sealing grommet
F	Environmental cable sealing backshell with cable clamp and individual wire sealing grommet
GR	Environmental backshell with rotatable coupling nut, heat shrink boot termination and wire sealing grommet
GS	Environmental 90° backshell with knurled heat shrink boot termination and wire sealing grommet
RS	Environmental lipped backshell with wire sealing grommet
SP	Environmental backshell with wire sealing grommet and EMI/RFI cable shield termination and heat shrink boot groove
Y	PC tail connector; available for 02 and 03 type shells only

Contact Options	
Sym	Description
B0	Connector without contacts
B1	Connector with gold plated contacts
Omit for standard version (silver plated)	

Material Performance	
Property	Marine Bronze/Unplated MB
Temperature Range	-55°C + 200°C
Salt Spray Hours	1000
Electrical Conductivity	Very Good
Mating Cycles	1000

NOTES

1. Shell styles 03, 030 and 038 may be ordered with threaded or through-hole mounting
2. BR accessories require additional ordering information; see BR Code Table for minimum and maximum cable diameters and code
3. PG accessories require additional ordering information; see PG Code Table for thread options
4. FM accessories require additional ordering information; see FM Code Table for thread options
5. PHM and PHM EMI accessories require additional ordering information; see PHM/PHM-EMI Code Table for minimum and maximum cable diameters

SUPER ITS: HARSH ENVIRONMENT

A

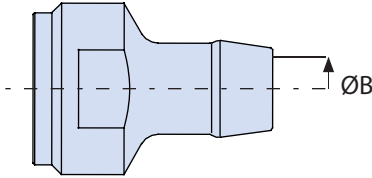


REVERSE-BAYONET Super ITS-MB Seacrow™ Marine Bronze Connectors



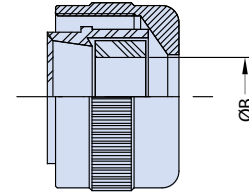
How to Order - Accessory Options

BR ADAPTER



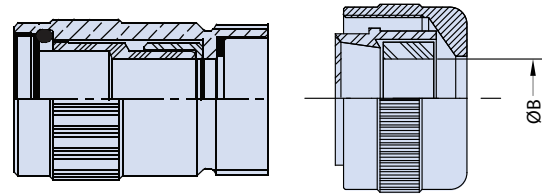
Shell Size	Standard UNI 4883 Tubing Dimensions		ØB	BR Code
	Outer Dia.	Inner Dia.		
10 SL	17.0 (0.67)	12.0 (0.47)	10.5 (0.41)	BR1712
14 S	27.0 (1.06)	22.0 (0.87)	16.5 (0.65)	BR2722
16-16 S	17.0 (0.67)	12.0 (0.47)	10.5 (0.41)	BR1712
16-16 S	20.0 (0.79)	15.0 (0.59)	14.0 (0.55)	BR2015
18	27.0 (1.06)	22.0 (0.87)	20.5 (0.81)	BR2722
20-22	17.0 (0.67)	12.0 (0.47)	10.5 (0.41)	BR1712
20-22	25.0 (0.98)	20.0 (0.79)	18.5 (0.73)	BR2520
20-22	27.0 (1.06)	22.0 (0.87)	20.5 (0.81)	BR2722
20-22	33.0 (1.30)	28.0 (1.10)	25.0 (0.98)	BR3328
20-22	35.0 (1.38)	30.0 (1.18)	28.5 (1.12)	BR3530
20-22	38.0 (1.50)	33.0 (1.30)	31.5 (1.24)	BR3833
24-28	25.0 (0.98)	20.0 (0.79)	18.5 (0.73)	BR2520
24-28	27.0 (1.06)	22.0 (0.87)	20.5 (0.81)	BR2722
24-28	30.0 (1.18)	25.0 (0.98)	23.5 (0.93)	BR3025
24-28	33.0 (1.30)	28.0 (1.10)	26.5 (1.04)	BR3328
24-28	35.0 (1.38)	30.0 (1.18)	28.5 (1.12)	BR3530
24-28	38.0 (1.50)	33.0 (1.30)	31.5 (1.24)	BR3833
24-28	50.0 (1.97)	45.0 (1.77)	43.5 (1.71)	BR5045
32	30.0 (1.18)	25.0 (0.98)	23.5 (0.93)	BR3025
32	33.0 (1.30)	28.0 (1.10)	26.5 (1.04)	BR3328
32	35.0 (1.38)	30.0 (1.18)	28.5 (1.12)	BR3530
32	40.0 (1.57)	35.0 (1.38)	31.5 (1.24)	BR4035
32	45.0 (1.77)	40.0 (1.57)	38.5 (1.52)	BR4540
32	50.0 (1.97)	45.0 (1.77)	40.0 (1.57)	BR5045
36	35.0 (1.38)	30.0 (1.18)	28.5 (1.12)	BR3530
36	40.0 (1.57)	35.0 (1.38)	31.5 (1.24)	BR4035
36	50.0 (1.97)	45.0 (1.77)	43.5 (1.71)	BR5045
40	35.0 (1.38)	30.0 (1.18)	28.5 (1.12)	BR3530
40	40.0 (1.57)	35.0 (1.38)	31.5 (1.24)	BR4035
40	45.0 (1.77)	40.0 (1.57)	38.5 (1.52)	BR4540
40	50.0 (1.97)	45.0 (1.77)	43.5 (1.71)	BR5045
40	55.0 (2.17)	50.0 (1.97)	48.5 (1.91)	BR5550

PHM BACKSHELL



Shell Size	Ø B		PHM Size
	Min. - Max.		
10 SL	2-9		PHM9
14 S	2-11		PHM11
16 S	2-11		PHM11
16	2-11		PHM11
18	2-11 / 2-16.5		PHM 11 / 18
20	2-11 / 2-16.5		PHM 11 / 18
22	2-16.5		PHM18
24	2-16.5 / 15-20 / 19-24		PHM 18 / 22 / 24
28	2-16.5 / 15-20 / 19-24		PHM 18 / 22 / 24
32	15-20 / 19-24		PHM 22 / 24
36	23-35		PHM35
40	23-35		PHM35

PHM-EMI BACKSHELL



Shell Size	Ø B		PHM Size	EMI Adapter
	Min. - Max.			
10 SL	2-9		PHM9	EMI67
14 S	2-11		PHM11	EMI67
16 S	2-11		PHM11	EMI67
16	2-11		PHM11	EMI67
18	2-11 / 2-16.5		PHM11 / 18	EMI67
20	2-11 / 2-16.5		PHM11 / 18	EMI67
22	2-16.5		PHM18	EMI67
24	2-16.5 / 15-20 / 19-24		PHM 18 / 22 / 24	EMI67
28	2-16.5 / 15-20 / 19-24		PHM 18 / 22 / 24	EMI67
32	15-20 / 19-24		PHM 22 / 24	EMI67
36	23-35		PHM35	EMI67
40	23-35		PHM35	EMI67

SUPER ITS: HARSH ENVIRONMENT

A

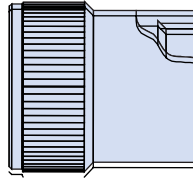


REVERSE-BAYONET Super ITS-MB Seacrow™ Marine Bronze Connectors



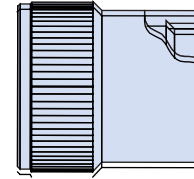
How to Order - Accessory Options

PG THREAD ADAPTER



Shell Size	PG Thread Size	Code
10 SL	7 / 9 / 11	7, 9 or 11
14 S	9 / 11 / 13.5	9, 11 or 13.5
16 S	11 / 13.5 / 16	11, 13.5 or 16
16	11 / 13.5 / 16	11, 13.5 or 16
18	13.5 / 16 / 21	13.5, 16 or 21
20	13.5 / 16 / 21	13.5, 16 or 21
22	13.5 / 16 / 21	13.5, 16 or 21
24	16 / 21 / 29	16, 21 or 29
28	16 / 21 / 29	16, 21 or 29
32	16 / 21 / 29	16, 21 or 29
36	21 / 29 / 36	21, 29 or 36
40	21 / 29 / 36	21, 29 or 36

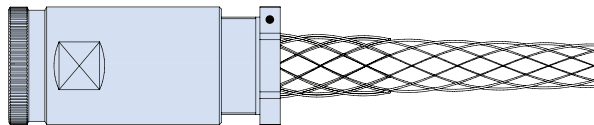
FM THREAD ADAPTER



Shell Size	FM Thread Size ¹	FM Thread Code
10 SL	M12x1.5	M12
14 S	M16x1.5	M16
16 S	M16x1.5	M16
16	M16x1.5	M16
18	M20x1.5	M20
20	M25x1.5	M25
22	M25x1.5	M25
24	M32x1.5	M32
28	M32x1.5	M32
32	M36x1.5	M36
36	M40x1.5	M40
40	M40x1.5	M40

1. Other threads available upon request

KG WIRE MESH GRIP ADAPTER



Wire Mesh Grip Size	Shell Size	Cable Range		CH Key
		Min	Max	
KG1	32	21.10 (0.831)	24.60 (0.969)	52
KG2		25.50 (1.004)	29.10 (1.146)	52
KG3		26.80 (1.055)	32.00 (1.260)	52
KG4		17.47 (0.688)	21.45 (0.844)	52
KG13		30.10 (1.185)	34.10 (1.343)	52
KG1	36	21.10 (0.831)	24.60 (0.969)	52
KG2		25.50 (1.004)	29.10 (1.146)	52
KG3		26.80 (1.055)	32.00 (1.260)	52
KG4		17.47 (0.688)	21.45 (0.844)	52
KG13		30.10 (1.185)	34.10 (1.343)	52
KG2	40	25.50 (1.004)	29.10 (1.146)	52
KG3		26.80 (1.055)	32.00 (1.260)	52
KG13		30.10 (1.185)	34.10 (1.343)	52
KG15		34.50 (1.358)	38.50 (1.516)	62
KG19		39.40 (1.551)	44.40 (1.748)	62

SUPER ITS: HARSH ENVIRONMENT

A