



REVERSE-BAYONET Super ITS-IGE MB Seacrow™ Single-Pole Marine Bronze Connectors



How to Order



Super ITS - IGE MB Seacrow reverse-bayonet single pole power connector with advanced sealing and durability

Super ITS IGE-MB Seacrow high-power single-pole connectors are used with cables from 16 to 240 mm. These connectors achieve high-performance working current and peak current, and are ideal for engines, power supplies, and power distribution boxes. Marine bronze backshells are available, either straight or right angle. IP67 protection is the standard performance, IP68 on request.

IGE-MB How To Order								
Sample Part Number	IGE	6E	22H9	Z	N	B	-14	MB
Series	IGE = Super ITS single-pole marine bronze connector							
Shell Style	See shell styles table							
Shell Size/Contact Size	16H2, 18H5, 22H9, 28H15, 32H24; see wire accommodation table							
Contact Gender	Z = Male F = Female X = Pin/Socket; for bulkhead feed through connectors (9E & 9EFP) only							
Insert Rotation	N = Standard W = Alternate; see alternate positions							
Coupling	B = Bayonet							
Accessory Options	NØ = No accessory; see accessory options table and reference shell style / accessory code matrix table for availability							
Material/Finish	MB = Marine bronze TZ = Tin-zinc; omit for aluminum alloy shell with cad/olive drab finish							

Shell Styles	
Shell Style	Description
0E	Rear panel mount, wall mount receptacle with threaded mounting holes
1E	In-line receptacle
2E	Front panel mount, box mount receptacle with threaded mounting holes
2EFP	Front panel mount, box mount receptacle with through mounting holes
2EFF	Front panel mount, box mount receptacle with threaded mounting holes
03	Connector with shrink boot adapter
04	Connector with crimp contacts
6E	Plug connector
7E	Rear panel mount, jam-nut receptacle
8E	Plug with grounding fingers and right angle backshell with cable shield termination and shrink boot groove
9E	Bulkhead feedthrough with threaded mounting holes
9EFP	Bulkhead feedthrough with through mounting holes

Accessory Options	
Code	Description
03	Connector with shrink boot abapter
04	Connector with crimp contacts
14	Connector and adapter with cable shield termination and shrink boot groove; grounding fingers standard when combined with plug (6E) shell style
16	Connector with threaded post
ZL	Connector and backshell with banding porch and shrink boot groove; without band
ZLF	Connector and backshell with banding porch and shrink boot groove; with band

Shell Style / Accessory Code Matrix						
Shell Styles	Accessory Codes					
	03	04	14	16	ZL	ZLF
0E	X				X	X
1E	X		X			
2E		X		X		
2EFF				X		
2EFP		X				
6E	X		X	X		
7E				X		
8E			X			

No Modification codes available for 9E or 9EFP Shell Styles

SUPER ITS: HARSH ENVIRONMENT

A



REVERSE-BAYONET Super IGE-MB Seacrow™ Single-Pole Marine Bronze Connectors



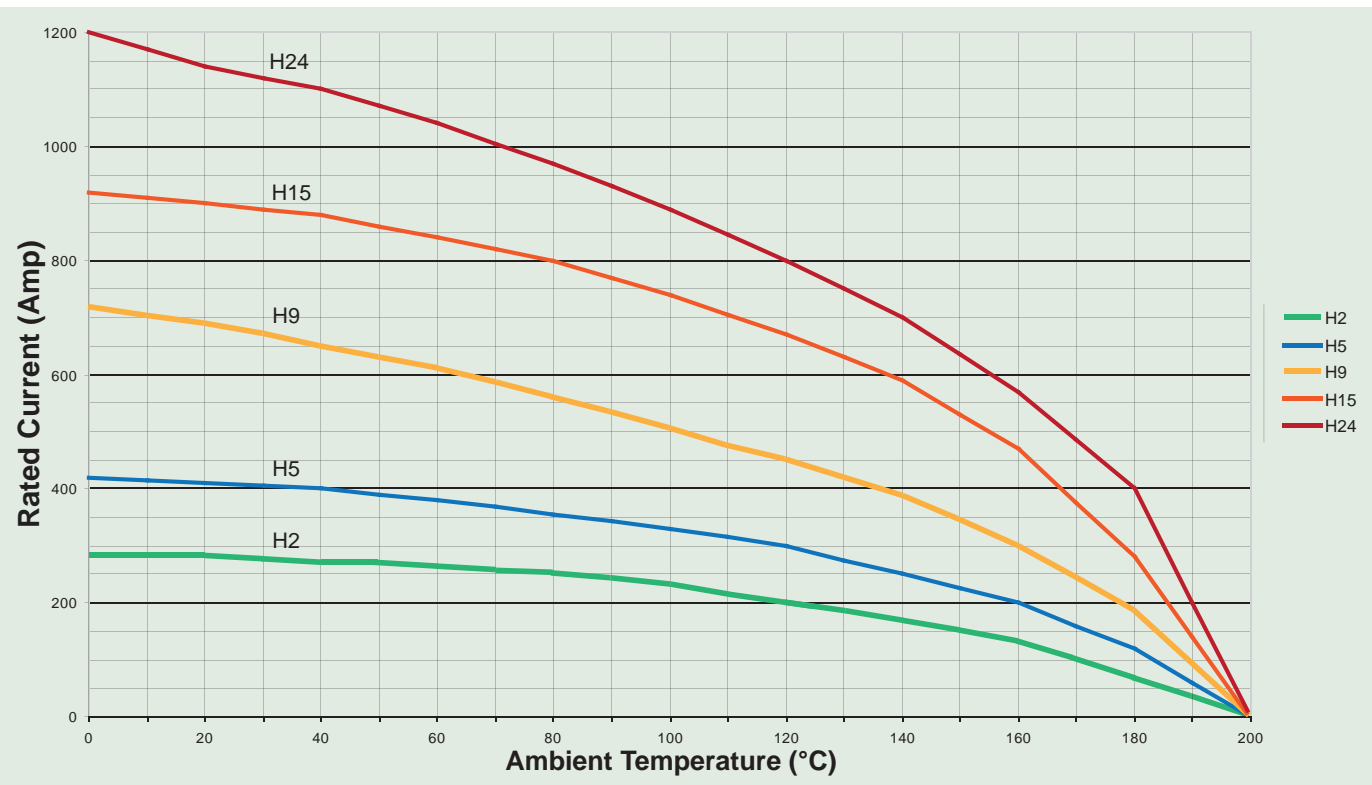
Power Connector Performance Specifications

Mechanical Performance	
Water Resistance	1 Bar
Vibration Resistance	200 m/s ² 10 to 2000 Hz
Temperature Range	-55°C to 150°C
Mating Cycles	500

Electrical Performance	
Insulating Resistance	5000 MΩ min
Test Voltage	1050 Vac
Working Voltage	350 Vac

According to MIL-STD-1344

Contact Sizes. Wire Accommodation. Electrical Performance and Coupling Torque								
Contact Size	Shell Size	Wire Size	Current Rating at 125° C	Maximum Short-Duration Current 0.5÷1s	Max Contact Resistance	Contact Retention Test Force (VG95319-2) Minimum	Coupling Torque	
							Opening and Closing Max	Opening Min
H2	16	25 mm ²	See Graphic Below	750 A	0.60 mΩ	100 N	5.5 Nm	0.5 Nm
H5	18	50 mm ²		1,000A	0.30 mΩ	120 N	8.0 Nm	0.6 Nm
H9	22	95 mm ²		2,000 A	0.15 mΩ	140 N	11.0 Nm	0.8 Nm
H15	28	150 mm ²		3,000 A	0.10 mΩ	160 N	17.0 Nm	0.9 Nm
H24	38	240 mm ²		5,000 A	0.07 mΩ	200 N	19.0 Nm	1.0 Nm



SUPER ITS: HARSH ENVIRONMENT

A



REVERSE-BAYONET
Super IGE-MB Seacrow™
Single-Pole Marine Bronze Connectors
Contact Specifications



**IGE 0E, 1E, 2EFF, AND 2EFP
 CRIMP SOCKET CONTACTS**

Shell Size	IGE Shell Style	Contact Kit Part Number
SIZE 16	0E, 1E, 2EFF, and 2EFP	K-IGE16H2F
SIZE 18		K-IGE-60H5FCG10
SIZE 22		K-IGE-60H9FCG10
SIZE 28		K-IGE-60H15FCG10
SIZE 32		K-IGE-60H24FCG10

**IGE 0E, 1E, 2EFF, AND 2EFP
 CRIMP PIN CONTACTS**

Shell Size	IGE Shell Style	Contact Kit Part Number
SIZE 16	0E, 1E, 2EFF, and 2EFP	K-IGE16H2Z
SIZE 18		K-IGE-60H5ZCG10
SIZE 22		K-IGE-60H9ZCG10
SIZE 28		K-IGE-60H15ZCG10
SIZE 32		K-IGE-60H24ZCG10

IGE 8E CRIMP SOCKET CONTACTS

Shell Size	IGE Shell Style	Contact Kit Part Number
SIZE 22	8E	K-IGE8-60H9FCG10
SIZE 28		K-IGE8-60H15FCG10
SIZE 32		K-IGE8-60H24FCG10

IGE 8E CRIMP PIN CONTACTS

Shell Size	IGE Shell Style	Contact Kit Part Number
SIZE 22	8E	K-IGE8-60H9ZCG10
SIZE 28		K-IGE8-60H15ZCG10
SIZE 32		K-IGE8-60H24ZCG10

IGE 7E CRIMP SOCKET CONTACTS

Shell Size	IGE Shell Style	Contact Kit Part Number
SIZE 22	7E	K-IGE7-60H9FCG10

IGE 7E CRIMP PIN CONTACTS

Shell Size	IGE Shell Style	Contact Kit Part Number
SIZE 22	7E	K-IGE7-60H9ZCG10

IGE 6E AND 2E THREADED SOCKET CONTACTS

Shell Size	IGE Shell Style	Contact Kit Part Number
SIZE 18	6E, and 2E	K-IGE-60H5FG10
SIZE 22		K-IGE-60H9FG10
SIZE 28		K-IGE-60H15FG10
SIZE 32		K-IGE-60H24FG10

IGE 6E AND 2E THREADED PIN CONTACTS

Shell Size	IGE Shell Style	Contact Kit Part Number
SIZE 18	6E, and 2E	K-IGE-60H5Z-TG10
SIZE 22		K-IGE-60H9Z-TG10
SIZE 28		K-IGE-60H15Z-TG10
SIZE 32		K-IGE-60H24Z-TG10

**IGE 9E AND 9EFP SOLID CONTACT
 (PIN/SOCKET) FEED-THRU CONTACTS**

Shell Size	IGE Shell Style	Contact Kit Part Number
SIZE 22	9E, 9EFP	K-IGE9-60H9CG10
SIZE 28		K-IGE9-60H15CG10
SIZE 32		K-IGE9-60H24CG10

SUPER ITS: HARSH ENVIRONMENT

A



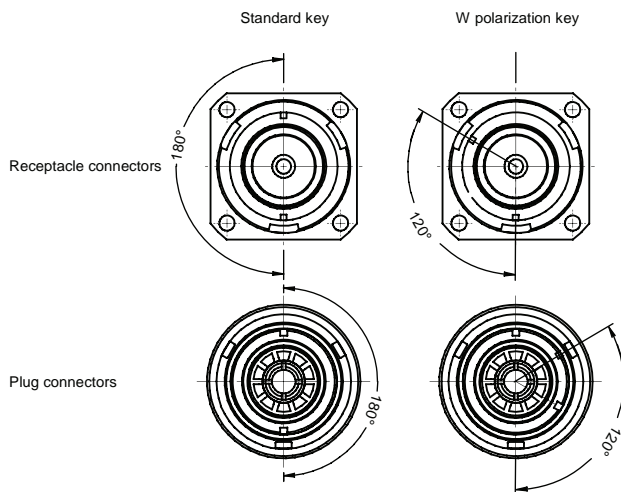
REVERSE-BAYONET Super ITS-IGE MB Seacrow™ Single-Pole Marine Bronze Connectors



How to Order

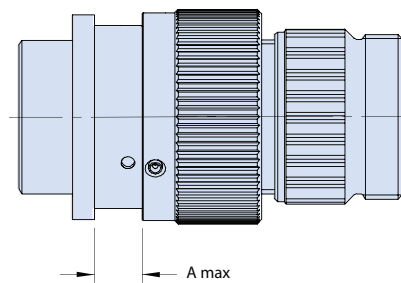
ALTERNATE KEY AND KEYWAY POSTIONS

To avoid mismatching of similar connectors . IGE connectors are available with key and keyway in two different positions:
W: 120° N: 180°



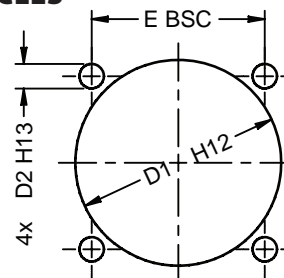
Contact Wire accommodation					
Shell Size	Contact Size	Wire Size	Current Rating at 85°C		Max. Contact Resistance
16	H2	25 mm ²	225 A	750 A	0.60 mΩ
18	H5	50 mm ²	350 A	1.000 A	0.30 mΩ
22	H9	95 mm ²	570 A	2.000 A	0.15 mΩ
28	H15	150 mm ²	750 A	3.000 A	0.10 mΩ
32	H24	240 mm ²	950 A	5.000 A	0.07 mΩ

MAXIMUM PANEL ACCOMMODATION



Shell Size	16	18	22	28	32
A Max	3.7 (0.15)	3.7 (0.15)	3.7 (0.15)	5.25 (0.21)	6.1 (0.24)

MOUNTING DIMENSIONS FOR SQUARE FLANGE RECEPTACLES



Size	D1		D2			E
	Front	Rear	2E-16	9EFP	0E-03 9E	
16	-	1.09 (0.043)	M4	M4	0.18 (0.007)	0.97 (0.038)
18	1.08 (0.043)	1.22 (0.048)	M4	M4	0.18 (0.007)	1.06 (0.042)
22	1.33 (0.052)	1.49 (0.059)	M4	M4	0.18 (0.007)	1.25 (0.049)
28	1.70 (0.067)	1.85 (0.073)	M4	M5	0.22 (0.009)	1.56 (0.061)
32	1.96 (0.077)	2.12 (0.083)	M4	M5	0.22 (0.009)	1.75 (0.069)

SUPER ITS: HARSH ENVIRONMENT

A

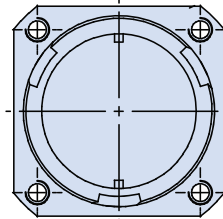
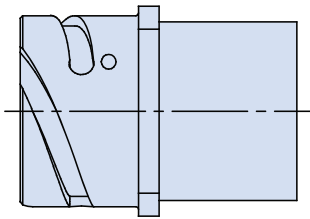


REVERSE-BAYONET Super ITS-IGE MB Seacrow™ Single-Pole Marine Bronze Connectors



Power Connector and Backshell Combinations

STYLE 2E AND 2EFP: FRONT PANEL MOUNT, BOX MOUNT RECEPTACLE — THREADED OR THROUGH-HOLE WITH CRIMP CONTACT

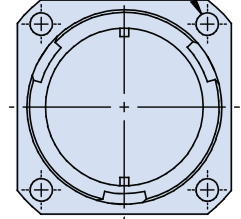
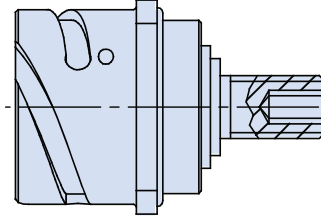


2E = Threaded. Front Panel Mount



2EFP = Through-Hole. Front Panel Mount

STYLE 2E AND 2EFP: FRONT PANEL MOUNT, BOX MOUNT RECEPTACLE — THREADED OR THROUGH-HOLE WITH THREADED CONTACT TERMINATION



2E = Threaded. Rear Panel Mount



2EFP = Through-Hole. Front Panel Mount

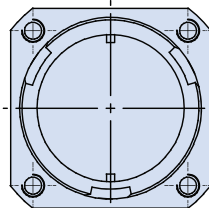
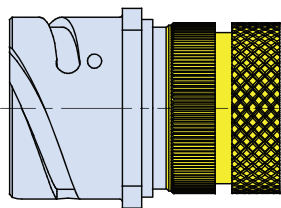
Sample Part Number

IGE	2E	22H9	Z	N	B	-04	MB
Basic P/N	Shell Style 2E or 2EFP	Shell Size and Contact Size	Contacts F = Socket Z = Pin	Keyway N - Stand. W - Alt.	Bayonet Coupling	Access. Code 04	Marine Bronze Finish

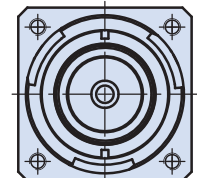
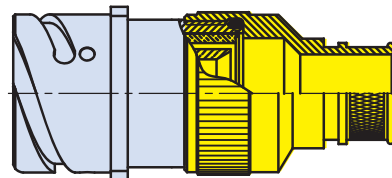
Sample Part Number

IGE	2E	22H9	Z	N	B	-16	MB
Basic P/N	Shell Style 2E or 2EFP	Shell Size and Contact Size	Contacts F - Socket Z - Pin	Keyway N - Stand. W - Alt.	Bayonet Coupling	Access. Code	Marine Bronze Finish

STYLE 0E: REAR PANEL MOUNT, WALL MOUNT RECEPTACLE WITH THREADED HOLES AND SHRINK BOOT ADAPTER



STYLE 0E: REAR PANEL MOUNT, WALL MOUNT RECEPTACLE WITH THREADED HOLES AND ADAPTER WITH SHRINK BOOT GROOVE AND BANDING PORCH WITH OR WITHOUT BAND



ZL - Supplied with Band
ZLF - Supplied without Band

Sample Part Number

IGE	0E	22H9	Z	N	B	-03	MB
Basic P/N	Shell Style	Shell Size and Contact Size	Contacts F = Socket Z = Pin	Keyway N - Stand. W - Alt.	Bayonet Coupling	Access. Code	Marine Bronze Finish

Sample Part Number

IGE	0E	22H9	Z	N	B	-ZL	MB
Basic P/N	Shell Style	Shell Size and Contact Size	Contacts F - Socket Z - Pin	Keyway N - Stand. W - Alt.	Bayonet Coupling	Access. Code ZL - No Band ZLF - Band	Marine Bronze Finish

SUPER ITS: HARSH ENVIRONMENT

A



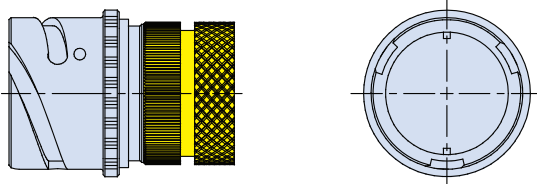
REVERSE-BAYONET

Super ITS-IGE MB Seacrow™ Single-Pole Marine Bronze Connectors

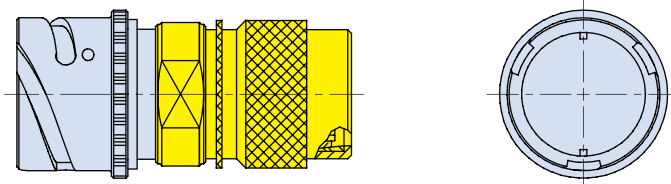


Power Connector and Backshell Combinations

STYLE 1E: IN-LINE RECEPTACLE WITH CRIMP CONTACT AND SHRINK BOOT ADAPTER



STYLE 1E: IN-LINE RECEPTACLE WITH CRIMP CONTACT AND ROTATABLE COUPLING ADAPTER WITH CABLE SHIELD TERMINATION AND SHRINK BOOT GROOVE



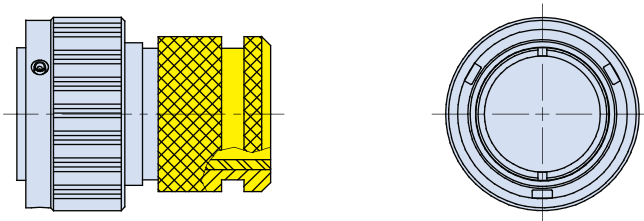
Sample Part Number

IGE	1E	22H9	Z	N	B	-03	MB
Basic P/N	Shell Style	Shell Size and Contact Size	Contacts F - Socket Z - Pin	Keyway N - Stand. W - Alt.	Bayonet Coupling	Access. Code 03	Marine Bronze Finish

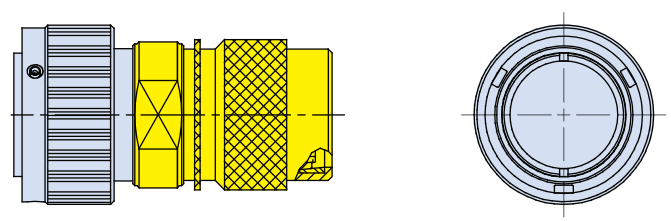
Sample Part Number

IGE	1E	22H9	Z	N	B	-14	MB
Basic P/N	Shell Style	Shell Size and Contact Size	Contacts F - Socket Z - Pin	Keyway N - Stand. W - Alt.	Bayonet Coupling	Access. Code	Marine Bronze Finish

STYLE 6E: PLUG WITH GROUNDING FINGERS AND SHRINK BOOT ADAPTER



STYLE 6E: STRAIGHT PLUG WITH GROUNDING FINGERS AND ADAPTER WITH CABLE SHIELD BANDING PORCH AND BOOT GROOVE



Sample Part Number

IGE	6E	22H9	Z	N	B	-03	MB
Basic P/N	Shell Style	Shell Size and Contact Size	Contacts F - Socket Z - Pin	Keyway N - Stand. W - Alt.	Bayonet Coupling	Access. Code	Marine Bronze Finish

Sample Part Number

IGE	6E	22H9	Z	N	B	-14	MB
Basic P/N	Shell Style	Shell Size and Contact Size	Contacts F - Socket Z - Pin	Keyway N - Stand. W - Alt.	Bayonet Coupling	Access. Code	Marine Bronze Finish

SUPER ITS: HARSH ENVIRONMENT

A

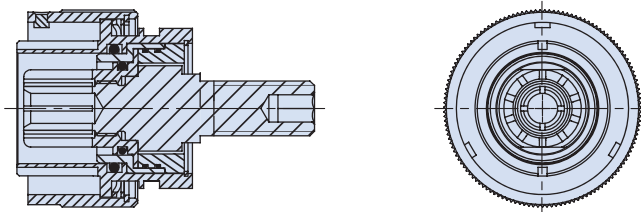


REVERSE-BAYONET Super ITS-IGE MB Seacrow™ Single-Pole Marine Bronze Connectors

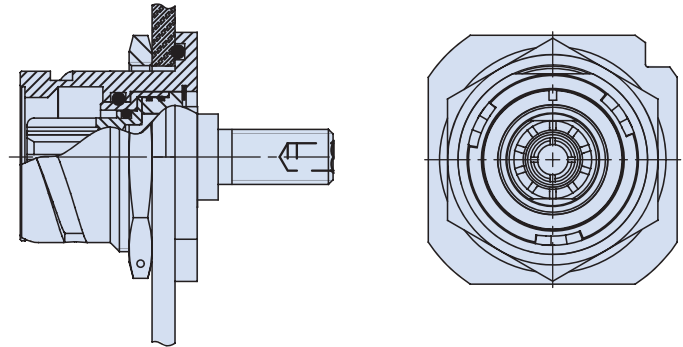


Power Connector and Backshell Combinations

STYLE 6E: STRAIGHT PLUG WITH GROUNDING FINGERS AND INTEGRAL SHRINK BOOT GROOVE



JAM NUT RECEPTACLE WITH THREADED CONTACT



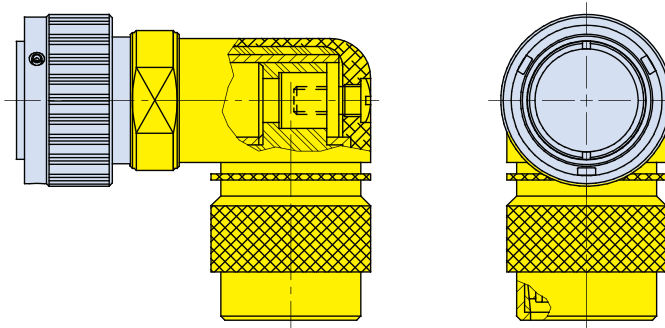
Sample Part Number

IGE	6E	22H9	Z	N	B	-16	MB
Basic P/N	Shell Style	Shell Size and Contact Size	Contacts F - Socket Z - Pin	Keyway N - Stand. W - Alt.	Bayonet Coupling	Access. Code	Marine Bronze Finish

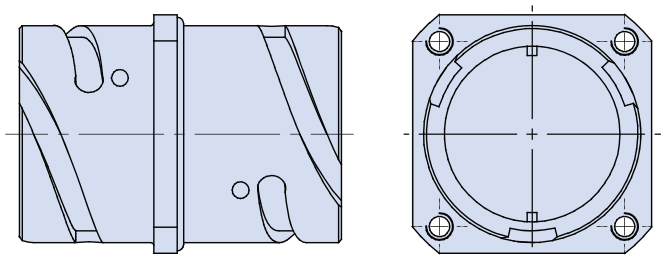
Sample Part Number

IGE	7E	22H9	Z	N	B	-16	MB
Basic P/N	Shell Style	Shell Size and Contact Size	Contacts F - Socket Z - Pin	Keyway N - Stand. W - Alt.	Bayonet Coupling	Access. Code	Marine Bronze Finish

RIGHT ANGLE PLUG WITH GROUNDING FINGERS PLUS ADAPTER WITH ROTATABLE COUPLING, CABLE SHIELD TERMINATION AND SHRINK BOOT GROOVE



BULKHEAD FEED-THROUGH WITH THREADED HOLES OR THROUGH HOLES



9E = Threaded Mounting Holes



9EFP = Through Mounting Holes

Sample Part Number

IGE	8E	22H9	Z	N	B	-14	MB
Basic P/N	Shell Style	Shell Size and Contact Size	Contacts F - Socket Z - Pin	Keyway N - Stand. W - Alt.	Bayonet Coupling	Access. Code	Marine Bronze Finish

Sample Part Number

IGE	9E	22H9	W	X	-B	MB
Basic P/N	Shell Style 9E or 9EFP	Shell Size and Contact Size	Keyway N - Stand. W - Alt.	Contact X = Pin/ Socket	Bayonet Coupling	Marine Bronze Finish

SUPER ITS: HARSH ENVIRONMENT

A