

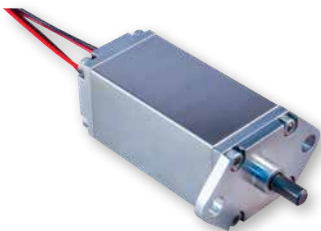
061-013

Medium duty pin pushers and pullers

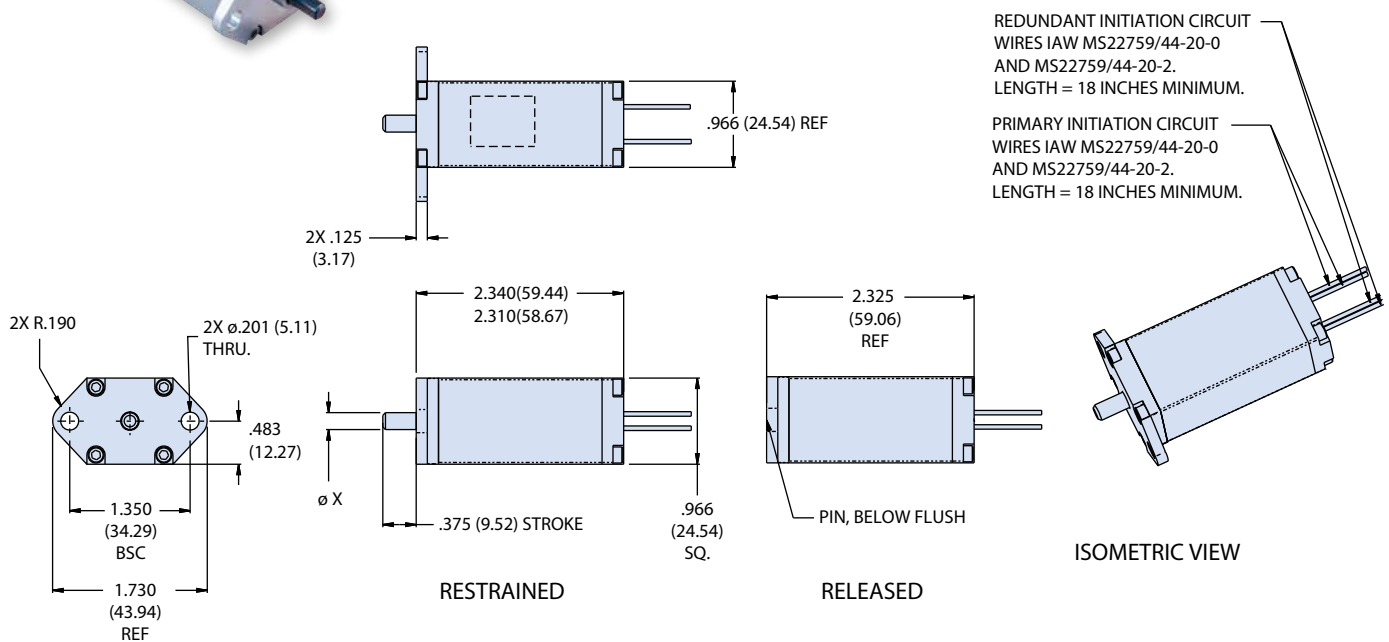
50 lb. pull force
Redundant circuit



ELECTRICALLY REDUNDANT PIN PULLER MECHANISM, MEDIUM DUTY



How To Order		
Sample Part No.	061-013	-190
Basic Part No.	Medium-Duty Pin Puller	
Pin Diameter/Side Load:	Per Table I	



NOTES

- Primary initiation circuit identified with "P" and redundant with "R".
- Pull force: 50 lbs. (222 N)
- Baseline pin puller qualification test parameters:
 - Survive static load: 330 Lbs
 - Hold and release: 40 Lbs
 - Random vibration 28.2 GRMS
 - Shock input: 2849 Gs
 - Thermal vacuum: 3 cycles -65°C to +70°C, 1.5×10^{-6} Torr, actuations at each extreme
 - Thermal vacuum no fire current: .250A, 5 minutes
 - Life cycle: 5 releases (one unit)
- Reference Glenair P/N 060-113 for refurbishment initiator
- Threads are available on the pin if needed. Metric threads also available
- Consult factory for additional options

Physical characteristics	
Mass	145.8 grams approximate weight
Material list	IAW MSFC-STD-3029
Device features	
Redundant initiation	2 initiation points
Field refurbishable	Initiator can be replaced in less than 15 minutes by trained personnel
Packaging	External housing typically supplied with two mounting points. Custom housings and mountings available
Connectorization	Standard design supplied with wire inputs. Connectorized versions available
*Size callout based on the bolt size to be used. Metric thread also available. Consult factory for qualification test report.	

Part Number Definition		
Dash Number	"X" (Pin ϕ)	Maximum Static Side Load (LBS)
-190	.190	330
-375	.375	1200



50 lb. pull force, Actuation curve

A

Actuation Curve for Pin Puller Mechanism
(ambient conditions)

