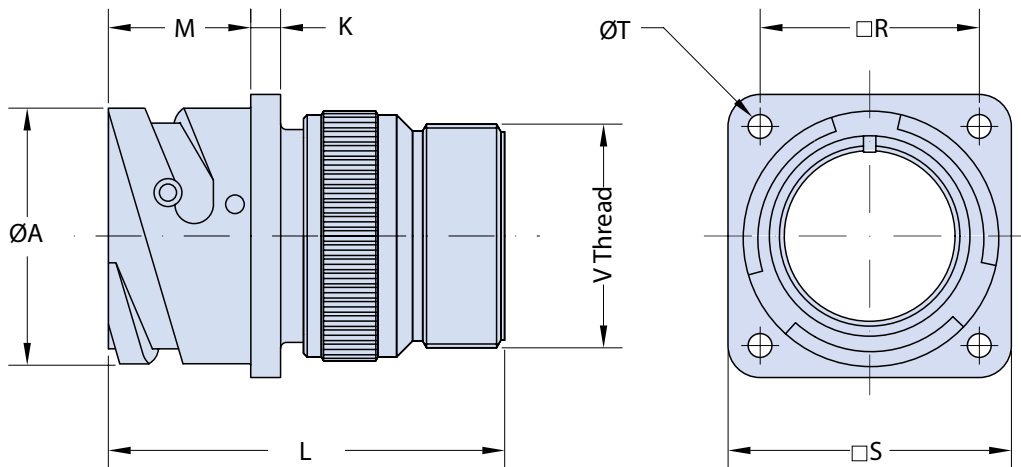
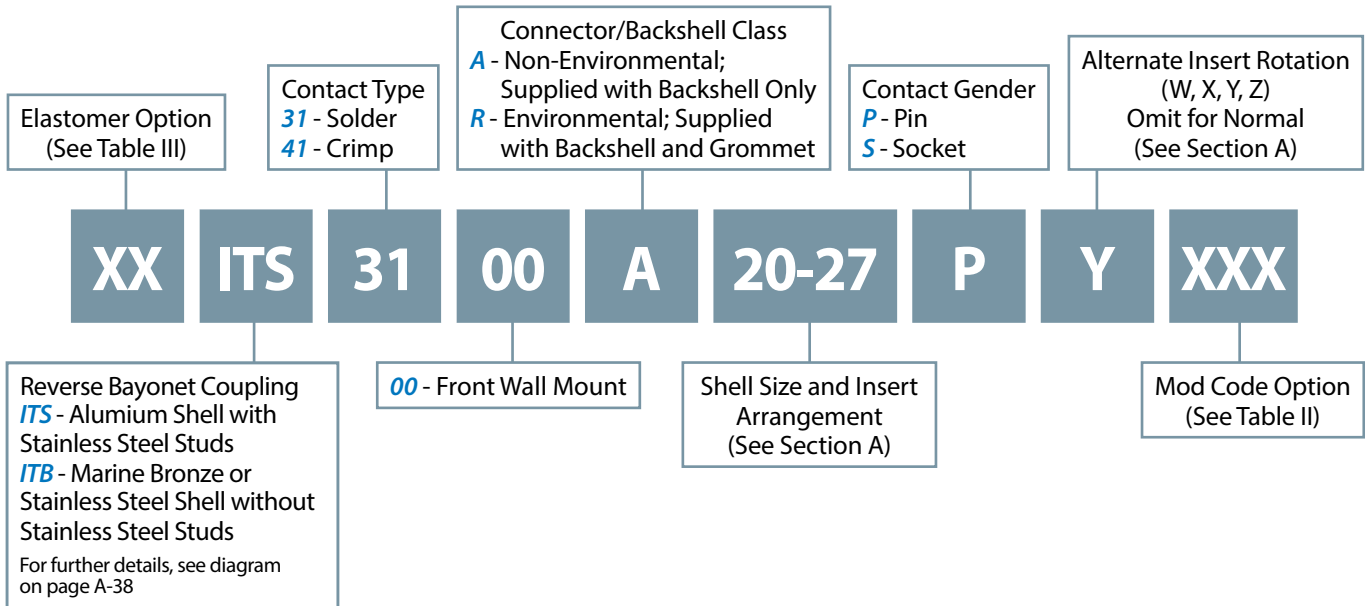


ITS 3100 A and ITS 3100 R  
ITS 4100 A and ITS 4100 R  
Front Panel Mount Square Flange Receptacle Assembly  
with Backshell for the Attachment of Additional Accessories



#### Application Notes

1. Front panel mount square flange receptacle with backshell for the attachment of strain relief cable clamps or other accessories. Through mounting holes.
2. Connector/Backshell Class "A" (non-environmental)—Not supplied with wire sealing grommet; Class "R" (environmental)—Supplied with grommet.
3. Standard materials configuration consists of aluminum alloy. For platings, see TABLE II finish options.
4. Standard contact material consists of copper alloy with silver plating or gold plating.
5. A broad range of other front and rear connector accessories are available. See our website and/or contact the factory for complete information.
6. Order cable clamps separately.

**ITS 3100 A and ITS 3100 R  
ITS 4100 A and ITS 4100 R**  
**Front Panel Mount Square Flange Receptacle Assembly  
with Backshell for the Attachment of Additional Accessories**



**TABLE I: DIMENSIONS**

| Shell Size   | ØA<br>+0.2<br>-0.1 | K<br>±0.2 | L<br>Max. | M<br>+0.4<br>-0 | R<br>±0.2 | S<br>±0.2 | ØT<br>+0.1<br>-0 | V<br>Thread     |
|--------------|--------------------|-----------|-----------|-----------------|-----------|-----------|------------------|-----------------|
| <b>10 SL</b> | 18.2               | 2.8       | 44.0      | 14.2            | 18.25     | 25.4      | 3.2              | 0.6250 - 24UNEF |
| <b>14 S</b>  | 24.5               | 3.2       | 46.5      | 14.2            | 23.00     | 30.4      | 3.2              | 0.7500 - 20UNEF |
| <b>16 S</b>  | 27.2               | 3.2       | 46.5      | 14.2            | 24.60     | 32.5      | 3.2              | 0.8750 - 20UNEF |
| <b>16</b>    | 27.2               | 3.2       | 57.0      | 19.0            | 24.60     | 32.5      | 3.2              | 0.8750 - 20UNEF |
| <b>18</b>    | 30.7               | 4.0       | 58.0      | 19.0            | 27.00     | 35.0      | 3.2              | 1.0000 - 20UNEF |
| <b>20</b>    | 34.0               | 4.0       | 58.0      | 19.0            | 29.40     | 38.0      | 3.2              | 1.1875 - 18UNEF |
| <b>22</b>    | 37.3               | 4.0       | 58.5      | 19.0            | 31.75     | 41.0      | 3.2              | 1.1875 - 18UNEF |
| <b>24</b>    | 40.9               | 4.0       | 60.5      | 20.6            | 34.90     | 44.5      | 3.7              | 1.4375 - 18UNEF |
| <b>28</b>    | 46.7               | 4.0       | 66.5      | 20.6            | 39.70     | 50.9      | 3.7              | 1.4375 - 18UNEF |
| <b>32</b>    | 53.4               | 4.0       | 71.5      | 22.2            | 44.50     | 57.0      | 4.3              | 1.7500 - 18UNS  |
| <b>36</b>    | 59.6               | 4.0       | 77.0      | 22.2            | 49.20     | 63.5      | 4.3              | 2.0000 - 18UNS  |
| <b>40</b>    | 65.5               | 4.0       | 77.0      | 22.2            | 55.55     | 69.9      | 4.3              | 2.2500 - 16UN   |

**B**

**TABLE II: MODIFICATION CODES**

| CONTACT OPTIONS                                  |  |      |
|--|--|------|
| Sym  | Description                            |      |
| B0   | Connector without Contacts**           |      |
| B1   | Connector with Gold Plated Contacts    |      |
| <b>Omit for standard version (Silver plated)</b> |  |      |
| STANDARD MATERIAL AND FINISH (*)                 |  |      |
| Sym  | Description                            | RoHS |
|  | Omit for Aluminum/ Cadmium Olive Drab  |      |
| F6   | Aluminum/ Black Electrodeposited Paint | ✓    |
| F7   | Aluminum/ Black Zinc Nickel            | ✓    |
| F11  | Aluminum/ Electroless Nickel           | ✓    |
| MB   | Marine Bronze/ Unplated                | ✓    |
| FK   | Stainless Steel/ Passivate             | ✓    |

**TABLE III**

| ELASTOMER OPTIONS |                                    |
|-------------------|------------------------------------|
| Sym               | Description                        |
|                   | Omit for Polychloroprene Elastomer |
| FR                | Fire Resistant Elastomer           |
| S                 | Silicone Elastomer                 |

(\*) For further options, please contact the factory.

(\*\*) Crimp Contacts Only