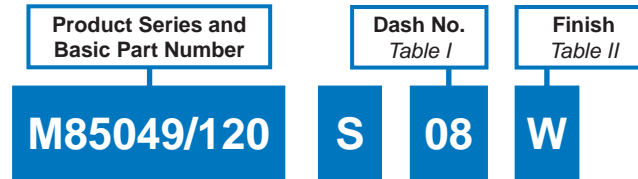


BACKSHELLS AND ACCESSORIES FOR AS81703 SERIES 3 TYPE CONNECTORS

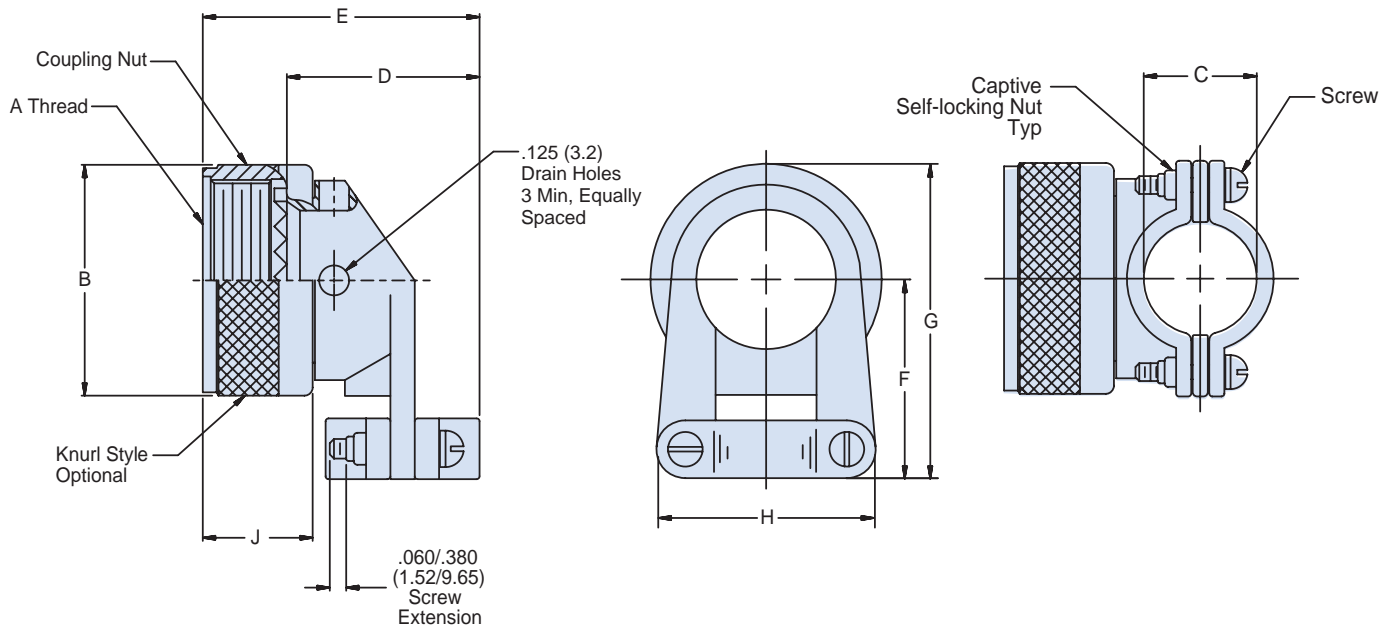
90° Strain Relief



AS85049/120



S = Detented Self-Locking
N = Non-Detented Self-Locking
 Use Dash (-) for Non-Self-Locking



| Dash No. | Screw Size | Shell Size | A Thread Class 2B | B Dia Max | C Dim ±.031 (0.8) | D Max | E Max Length | F Dim Max | G Dim Max | H Dim Max | J Dim Max |
|----------|------------|------------|-------------------|-------------|-------------------|-------------|--------------|-------------|-------------|-------------|-------------|
| 03 | 4-40 | 3 | 9/16-24 UNEF | .95 (24.1) | .219 (5.6) | .93 (23.6) | 1.29 (32.8) | .84 (21.3) | 1.32 (33.5) | .88 (22.4) | .710 (18.0) |
| 12 | 4-40 | 7 | 3/4-20 UNEF | 1.14 (29.0) | .344 (8.7) | 1.21 (30.7) | 1.57 (39.9) | .93 (23.6) | 1.50 (38.1) | 1.12 (28.4) | .710 (18.0) |
| 14 | 4-40 | 12 | 7/8-20 UNEF | 1.26 (32.0) | .460 (11.7) | 1.27 (32.3) | 1.63 (41.4) | 1.00 (25.4) | 1.62 (41.4) | 1.19 (30.2) | .710 (18.0) |
| 16 | 4-40 | 19 | 1-20 UNEF | 1.39 (35.3) | .545 (13.8) | 1.42 (36.1) | 1.78 (45.2) | 1.06 (26.9) | 1.75 (44.5) | 1.44 (36.6) | .710 (18.0) |
| 18 | 6-32 | 27 | 11/16-18 UNEF | 1.51 (38.4) | .615 (15.6) | 1.53 (38.9) | 1.89 (48.0) | 1.23 (31.2) | 1.99 (50.5) | 1.56 (39.6) | .710 (18.0) |
| 20 | 6-32 | 37 | 1 3/16-18 UNEF | 1.64 (41.7) | .698 (17.7) | 1.65 (41.9) | 2.01 (51.1) | 1.30 (33.0) | 2.07 (52.6) | 1.69 (42.9) | .710 (18.0) |
| 61 | 8-32 | 61 | 1 1/2-18 UNEF | 1.95 (49.5) | .850 (21.6) | 1.90 (48.3) | 2.26 (57.4) | 1.45 (36.8) | 2.43 (61.7) | 1.88 (47.8) | .710 (18.0) |

| Sym. | Material | Finish |
|------|----------------|-----------------------------|
| A | Aluminum Alloy | Black Anodize |
| N | | Electroless Nickel |
| W | | Cadmium, Olive Drab |
| X | | Nickel Fluorocarbon Polymer |
| Z | | Zinc Nickel |

NOTES

- Glenair Series 600 Backshell Assembly Tools are recommended for assembly and installation.
- Cable entry is measured with saddle bars closed and bottomed on clamp ears.
- Material/Finish:
 Clamp body, coupling nut, saddles - Al alloy or 300 Series SST/See Table II.
 Clamp screws and lock nuts - CRES/Passivated, Silver plate optional.
 Anti-rotation device - Corrosion resistant material