

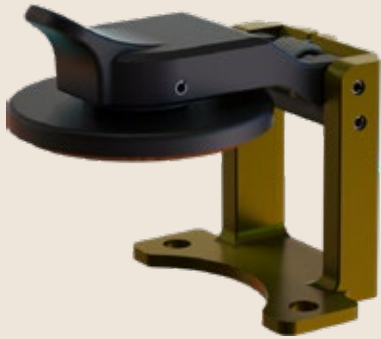
SPRING ACTION

# ProSeal™ environmental connector covers

for MIL-DTL-5015, ITS31030 and GT030 connectors  
 Pressure seal, dust and immersion resistant



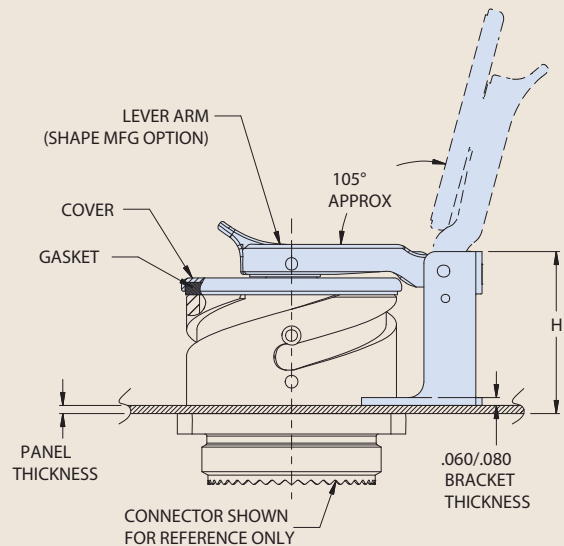
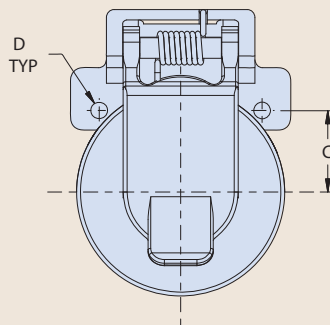
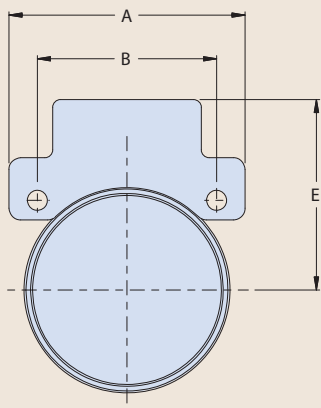
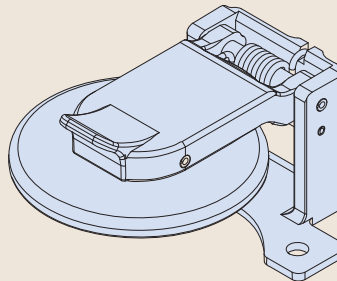
## 667-488 PROSEAL PROTECTIVE COVER FOR MIL-DTL-5015, ITS31030, AND GT030 CONNECTORS



How to Order 667-488					
<b>Sample Part Number</b>	<b>667-488</b>	<b>NF</b>	<b>06</b>	<b>T1</b>	<b>W</b>
<b>Series</b>	ProSeal protective cover for MIL-DTL-5015, ITS31030, and GT030 connectors				
<b>Material / Finish</b>	See Table II				
<b>Dash No. /Shell Size</b>	See Table I				
<b>Panel Thickness</b>	See Table III				
<b>Type of Mounting</b>	<b>W</b> = Wall Mount Receptacle				

- Pressure seal, dust and immersion resistant
- Self-aligning
- Positive spring-action in closed position. Locks open at approximately 105° from receptacle face.

Wall mount, shown closed



### MATERIAL / FINISH

Cover, Lever Arm, Gimbal - Thermoplastic / Black  
 Bracket - see Table II  
 Spring / Pin / Rivet - SST / Passivate  
 Sleeve - Delrin  
 Gasket - Silicone (optional)

SPRING ACTION

# ProSeal™ environmental connector covers

for MIL-DTL-5015, ITS31030 and GT030 connectors  
Pressure seal, dust and immersion resistant



Table I: Dimensions													
Dash No.	Shell Size	A max		B ±.015 (.38)		C ±.015 (.38)		D ±.008 (.20)		E max		H max	
		in	mm	in	mm	in	mm	in	mm	in	mm	in	mm
02	10S, 10SL	1.061	26.95	0.719	18.26	.360	9.14	.134	3.40	.903	22.94	1.133	28.78
06	14S	1.250	31.75	0.906	23.01	.453	11.51	.134	3.40	1.034	26.26	1.133	28.78
07	16	1.341	33.89	0.969	24.61	.485	12.32	.134	3.40	1.113	28.27	1.323	33.60
08	16S	1.341	33.89	0.969	24.61	.485	12.32	.134	3.40	1.113	28.27	1.133	28.78
09	18	1.467	37.26	1.062	26.97	.531	13.49	.134	3.40	1.149	29.18	1.384	35.15
10	20	1.593	40.46	1.156	29.36	.578	14.68	.134	3.40	1.365	34.67	1.469	37.31
11	22	1.719	43.66	1.250	31.75	.625	15.88	.134	3.40	1.429	36.30	1.469	37.31
12	24	1.871	47.52	1.375	34.93	.688	17.48	.154	3.91	1.491	37.87	1.407	35.74
13	28	2.042	51.87	1.562	39.67	.781	19.84	.154	3.91	1.589	40.36	1.447	36.75
14	32	2.230	56.64	1.750	44.45	.875	22.23	.177	4.50	1.714	43.54	1.446	36.73

5015 · VG95234

Table II: Material and Finish		
Sym	Material	Finish
MT	Aluminum	Nickel-PTFE
ZR		Zinc-Nickel, Black (Tri-Valent CR)
M		Electroless Nickel
NF		Cad Plate / Olive Drab over Electroless Nickel
C		Anodize / Black
UC		Zinc Cobalt / Black

Table III: Panel Thickness		
Dash No.	Panel Thickness* ±.030 (.76)	
	in	mm
T1	.062	1.57
T2	.125	3.18