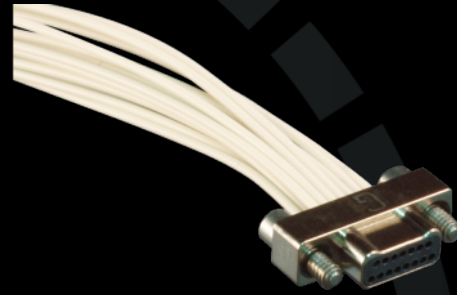
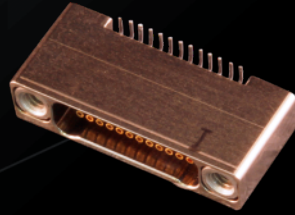
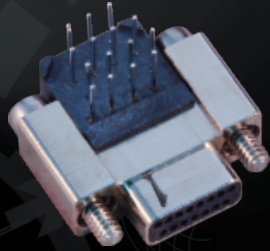


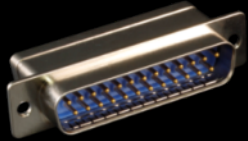
The widest range of  
mission-critical interconnect  
technologies in the world



**Nanominiature Connectors**

# Glenair Rectangular Connector Series Summary

## HiPer-D



*Glenair Sr. 28*

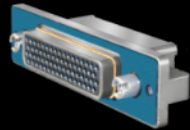
M24308

5 - 40 AMPs

31 Layouts

9-104 Ways

## Micro-Crimp



*Glenair Sr. 79*

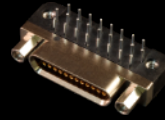
N/A

5-23 AMP

**33** Layouts

2-102 Ways

## Micro-D



*Glenair Sr. 17*

M83513

3 AMP

8 Layouts

9-100 Ways

## AlphaLink



*Glenair Sr. 171*

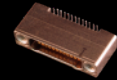
N/A

2 AMP

12 Layouts

4-40 Ways

## Nano



*Glenair Sr. 89*

M32139

1 AMP

7 Layouts

9-85 Ways

# Series 89

## Nano Connector Features

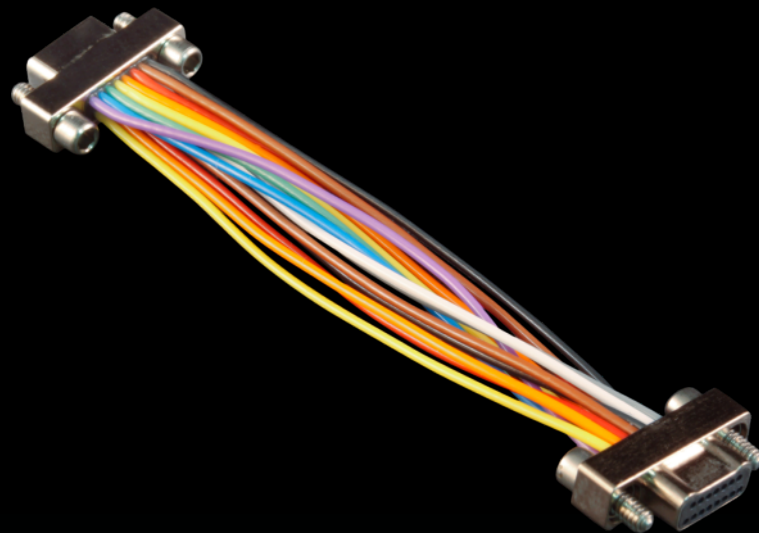
- Super small, lightweight and versatile
- High reliability TwistPin contact system for added performance and reliability
- Ideally suited for use in down-hole electronics, space systems, missile systems and avionic enclosures



# Series 89

## Nano Connector Features

- Contact spacing 0.025 inches (0.635 mm) housed within a metal body
- Available harsh-environment materials:
  - Plated aluminium (CAD and Electroless Nickel)
  - Stainless Steel
  - Titanium
- Single or Dual row layouts
- Contact arrangement 9 to 51 way and 65, 69, 85
- Qualified MIL-DTL-32139 and commercial versions



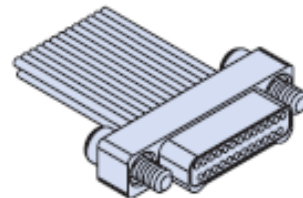
# Series 89

## Nano Connector Features

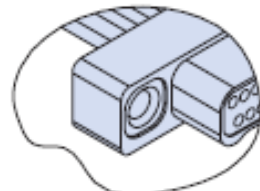


- Captivated 300 SST hardware
- Electrical performance
  - Current rating -1 amp
  - Voltage rating - (DWV) 250 VAC RMS at sea level; 100 VAC RMS @ 70,000 feet
- Contact engaging and separation force: 2 ounce maximum, 0.5 ounce minimum
- 200 mating cycles
- Operating temp -55°C to +125°C

### PLUG (PIN) CONNECTOR

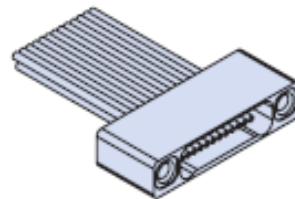


"J" Jackscrew Option

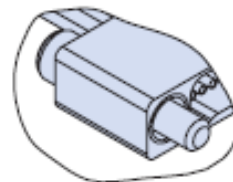


"T" Threaded Insert Option

### RECEPTACLE (SOCKET) CONNECTOR

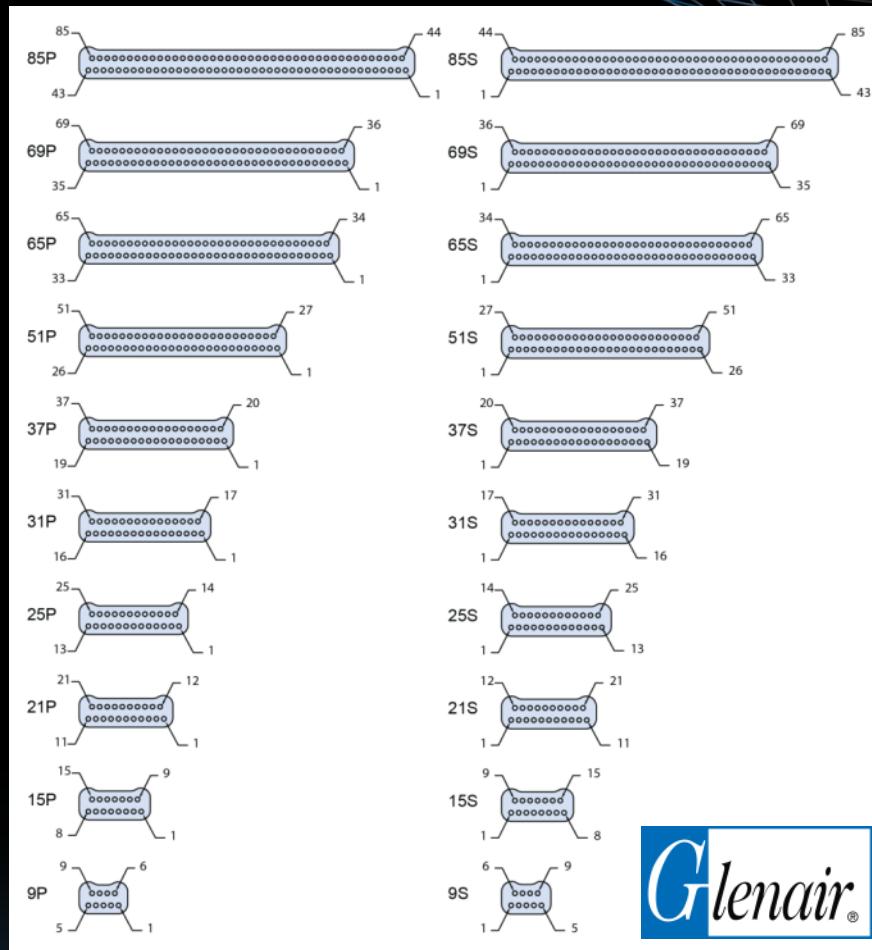
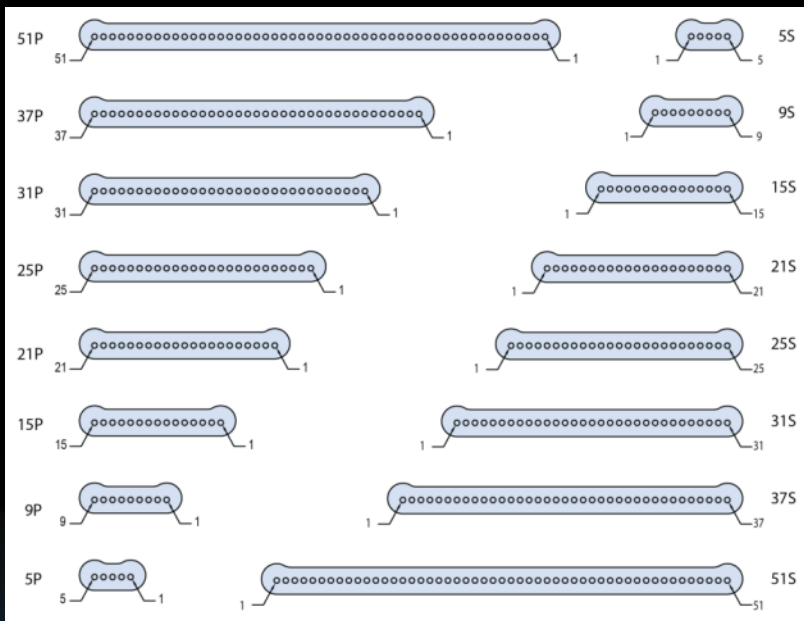


"T" Threaded Insert Option



"J" Jackscrew Option

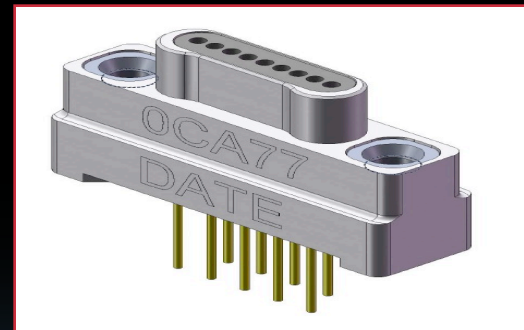
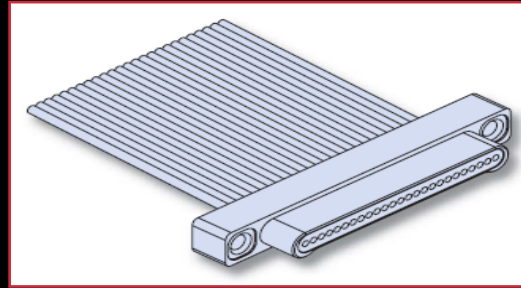
# Nanominiature Contact Arrangements, 9 to 85 Way



# Series 89

## Connector Types

- 890 Family – Single Row
  - Pre-Wired
    - ✓ Insulated Wire
    - ✓ Un-insulated Wire
    - ✓ Back to Back Jumper cables
  - Printed Circuit
    - ✓ Thru-Hole Vertical
    - ✓ Thru-hole 90°
    - ✓ Surface Mount Vertical
    - ✓ Surface Mount 90°

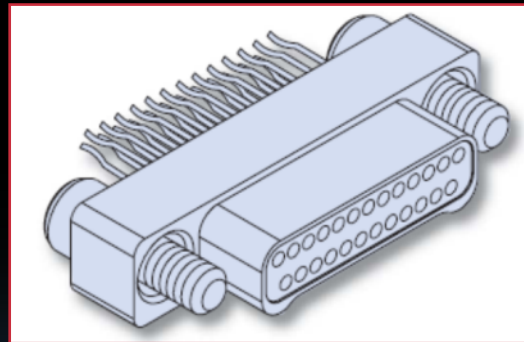
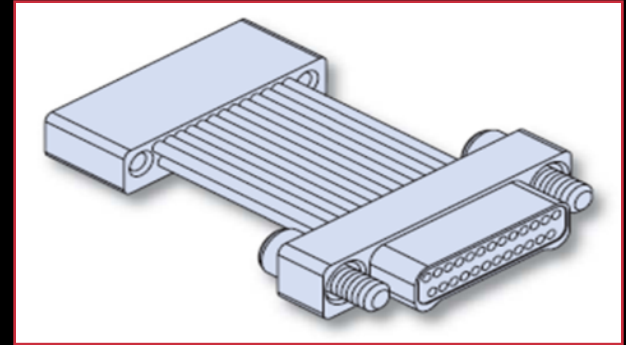




# Series 89 Connector Types



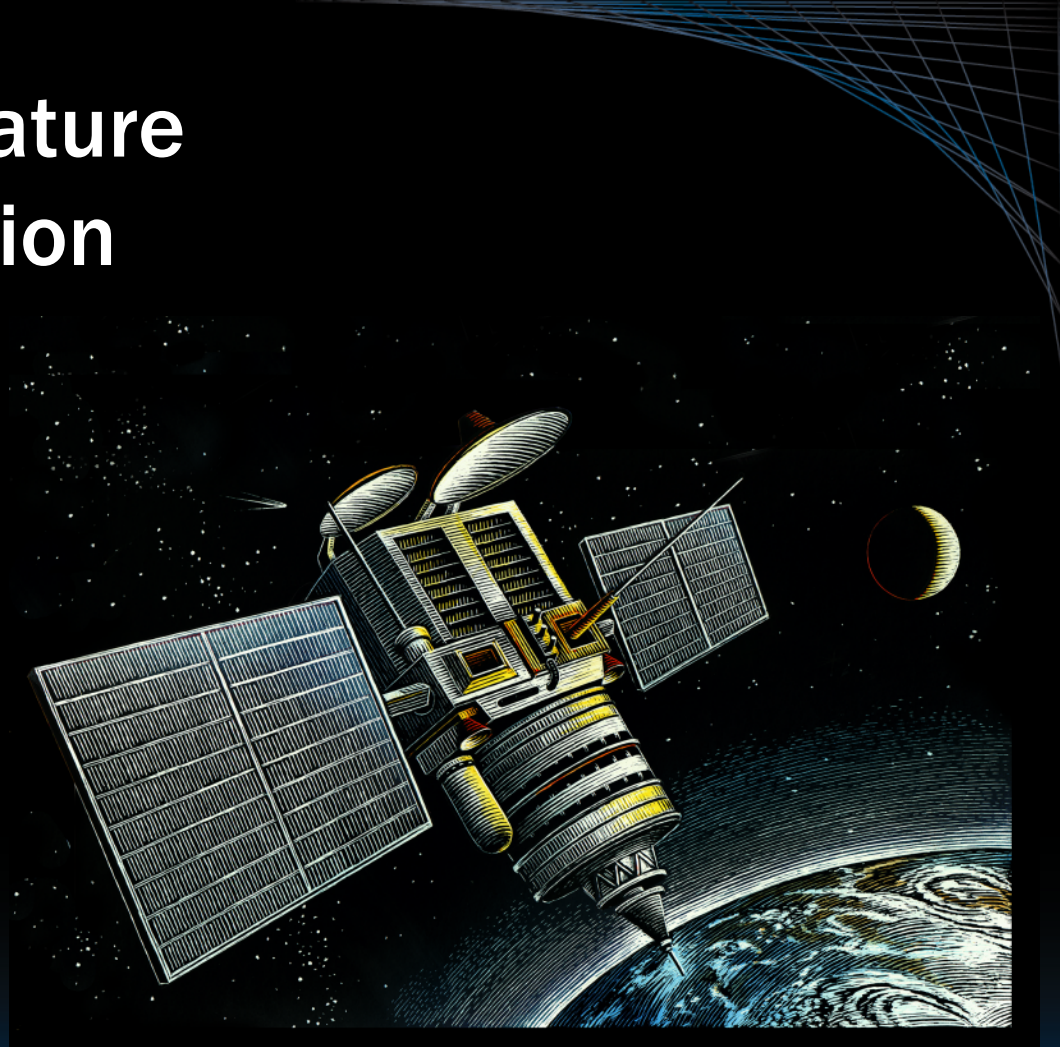
- 891 Family – Dual Row
  - Pre-Wired
    - ✓ Insulated Wire
    - ✓ Un-insulated Wire
    - ✓ Back to Back Jumper cables
  - Printed Circuit
    - ✓ Thru-Hole Vertical
    - ✓ Thru-hole 90°
    - ✓ Surface Mount Vertical
    - ✓ Surface Mount 90°
    - ✓ Surface Mount Straddle





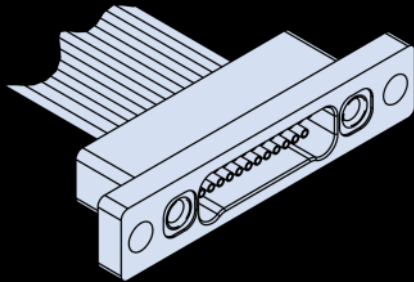
# Series 89 Nanominiature Product Line Expansion

New products for 2017

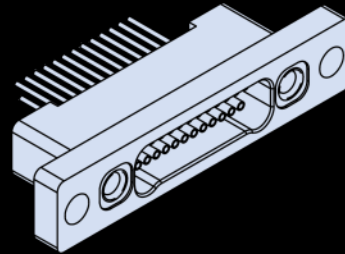


# Dual-Row Nanominiature Connectors

Front panel mount, insulated and uninsulated wire



891-050  
Insulated wire



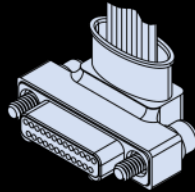
891-052  
Uninsulated wire

Note: aluminum shells available

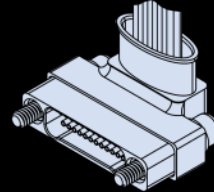
# Dual-Row Nanominiature Connectors

Jumper cable with backshell

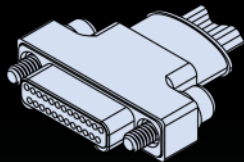
891-031 single-ended • 891-032 double-ended



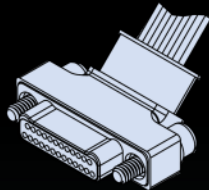
891-032  
90° plug



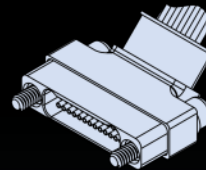
891-032  
90° receptacle



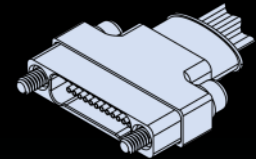
891-032  
Straight plug



891-032  
45° plug



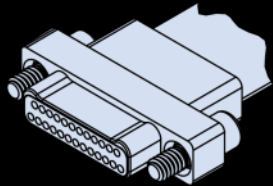
891-032  
45° receptacle



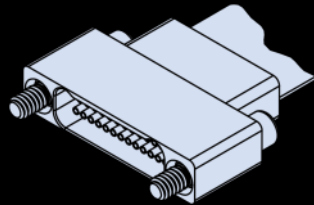
891-032  
Straight receptacle

# Dual-Row Nanominiature Connectors

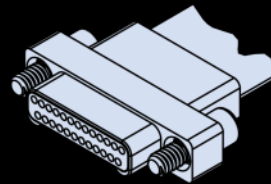
## Flex Jumpers



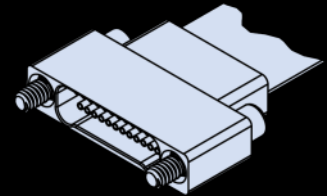
891-033  
Straight  
board level plug



891-033  
Straight  
board level receptacle



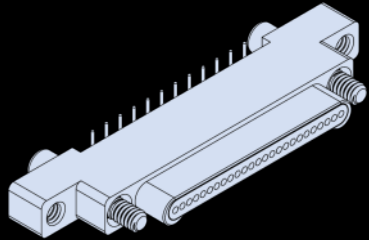
891-034  
90°  
board level plug



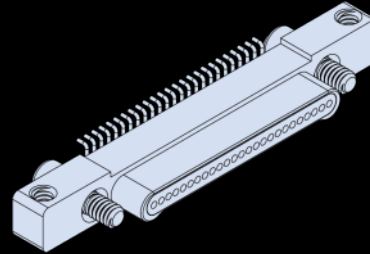
891-034  
90°  
board level receptacle

# Single-Row Nanominiature Connectors

## Surface mount connectors



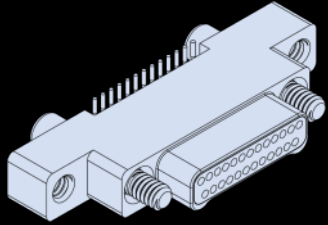
890-017P  
Vertical mount plug



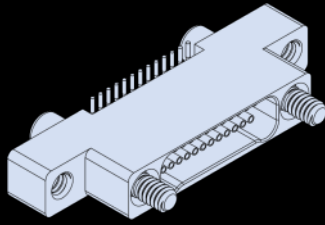
890-019P  
90° mount plug

Note: typically used on flex circuits

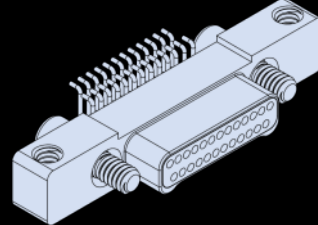
# PCB Dual-Row Nanominiature Connectors



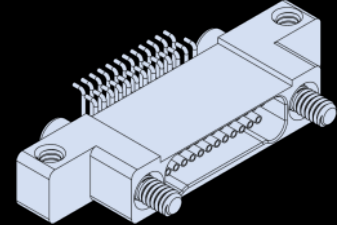
891-017  
Vertical mount  
plug



891-018  
Vertical mount  
receptacle



891-019  
Right-angle plug



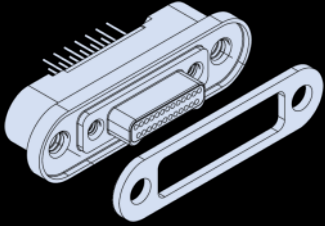
891-020  
Right-angle receptacle

Note: typically used on flex circuits

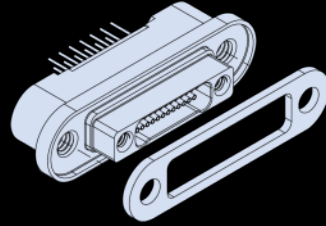


# Rear Panel Mount Dual-Row Nanominiature Connectors

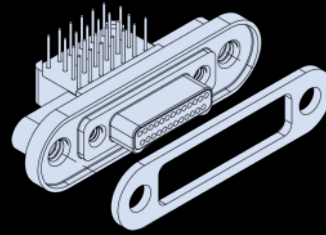
## Thru-hole connectors with gasket seal



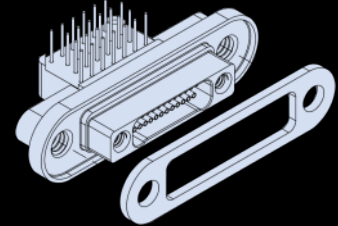
891-029  
Vertical mount  
plug



891-030  
Vertical mount  
receptacle



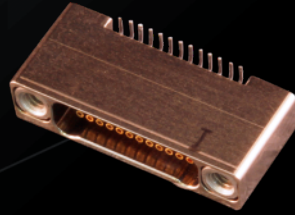
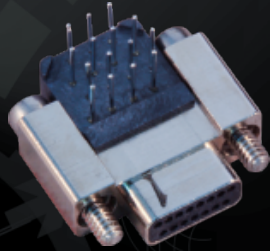
891-027  
Right-angle plug



891-028  
Right-angle receptacle

Note: dual row only available in stainless steel and titanium (no aluminum)

The widest range of  
mission-critical interconnect  
technologies in the world



**Nanominiature Connectors**