

The snap-lock, trigger-release connector

860-005R Panel Mounting Receptacles With Solder Cup Terminals



860-005R

Specifications

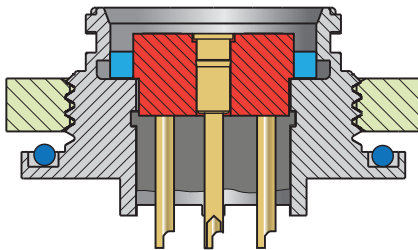
- Operating temperature: -55°C to +125°C
- Dielectric withstanding voltage: 500 VAC
- Current rating: 5 A
- Contact resistance: 20 milliohms
- Wire size: #22 AWG maximum
- Water immersion: MIL-STD-810G Method 512.5
- Ingress protection: IP67
- Mechanical life: 2000 cycles

Connector Construction

- Shell: stainless steel
- Jam nut: stainless steel
- Contacts: copper alloy, gold plated
- Insert: glass-filled thermoplastic
- O-ring: fluorosilicone
- Peripheral seal: fluorosilicone
- Potting compound: RTV silicone

860-005R panel mount MouseBud receptacles with “hot shoe” type contacts are lightweight, ultra low profile and are rated for 2000 mating cycles. Suitable for hostile environments including soldier-wearable electronics, these receptacle connectors meet MIL-STD-810G immersion requirements mated or unmated. Contacts are easy to clean, damage resistant and non-removable. Solder cups accept up to #22 AWG wire. Gold plated contacts, stainless steel shell and thermoplastic insulator. 5A current rating, 500VAC dielectric withstanding voltage rating. -55° to +125° C operating temperature.

How To Order	
	860-005R- B7 ZR 07 A- 12
Product	860-005R = MouseBud panel mount receptacle with solder cup terminals
Contact Arrangement (Table 1)	B7 = seven contacts, size B shell
Finish	M = electroless NI MT = Nickel-PTFE ZR = Black zinc-nickel
Shell Style	00 = front panel mounting 07 = rear panel mounting
Key Position (Table 2)	A = position A D = position D B = position B E = position E C = position C F = position F
Panel Thickness	15 = .062 (1.5) 30 = .125 (3.0)



Mounting Style 07
 for rear panel mounting

Table 1: Contact Arrangement		
<p>B7</p>	Contact Arr.	B7
	# of Contacts	7
	Contact Diameter	.038 (0.96)
	Current Rating	5A

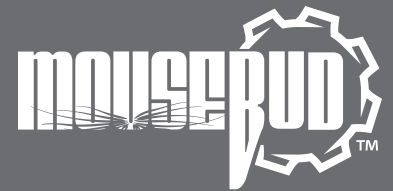
Table 2: Key Positions				
	Code	A°	B°	C°
	A	120°	200°	265°
	B	80°	150°	265°
	C	95°	150°	235°
	D	95°	200°	320°
	E	95°	225°	265°
	F	120°	225°	320°

SERIES 860

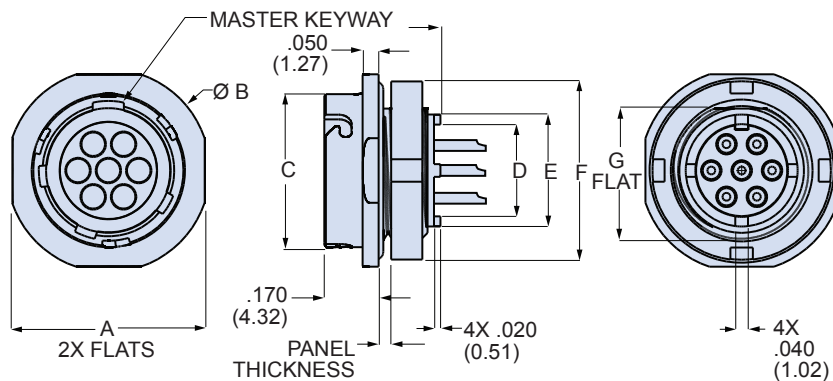
MouseBud™

The snap-lock, trigger-release connector

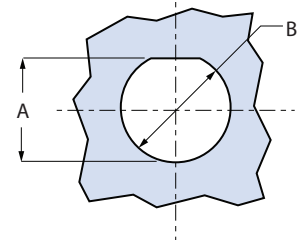
860-005R Panel Mounting Receptacles With Solder Cup Terminals



Front Panel Mount Style 00 Dimensions														
Contact Arr.	A		B		C		D		E		F		G	
	In.	mm.	In.	mm.	In.	mm.	In.	mm.	In.	mm.	In.	mm.	In.	mm.
B7	.602	15.29	.635	16.13	.480	12.19	.290	7.37	.350	8.89	.562	14.27	.410	10.41

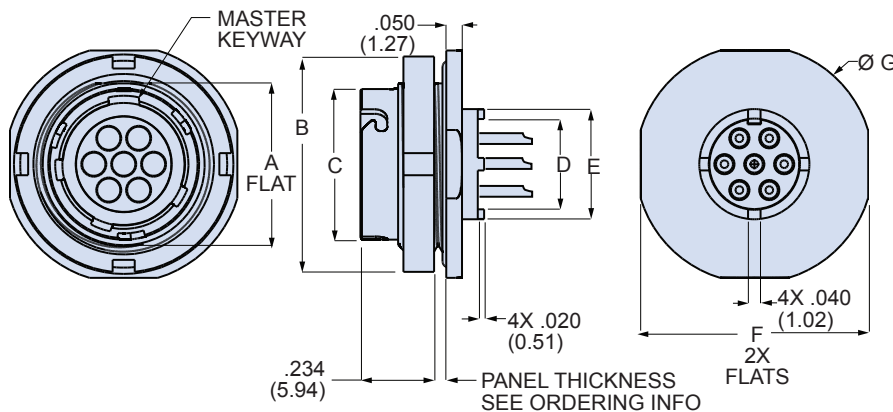


Style 00 Panel Cutout

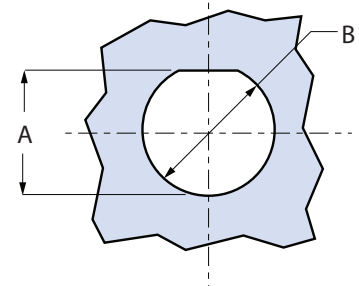


Contact Arr.	Shell Style	A		B	
		± .002 (0.05)	± .002 (0.05)	In.	mm.
B7	00	.416	10.57	.447	11.35

Rear Panel Mount Style 07 Dimensions														
Contact Arr.	A		B		C		D		E		F		G	
	In.	mm.	In.	mm.	In.	mm.	In.	mm.	In.	mm.	In.	mm.	In.	mm.
B7	.536	13.60	.688	17.48	.480	12.19	.290	7.37	.350	8.89	.723	18.36	.755	19.18



Style 07 Panel Cutout



Contact Arr.	Shell Style	A		B	
		± .002 (0.05)	± .002 (0.05)	In.	mm.
B7	07	.542	13.77	.572	14.53

Jam Nut Tightening Tools



Use these tools to install spanner-type jam nuts. 1/4 inch square drive. 20-25 in.-lbs. recommended torque. Hardened steel, nickel plated.

Layout	Mounting Style	Tool PN
B7	Style 00 Front Mt	600-146-05
B7	Style 07 Rear Mt	600-147-6