

SERIES 804 QDC PUSH-PULL

Mighty Mouse Connectors and Cables



Light Weight, Hermetic Jam-Nut Mount Receptacles with PC Tails or Solder Cups

CODE REDTM



CODE RED Light Weight Hermetic Panel Mount Receptacles

Quick Disconnect Series 804 Hermetic Connectors feature aluminum shells with advanced encapsulant sealing technology and gold-plated copper contacts. Contacts are factory-installed and non-removable. Choose solder cup or PC Tail terminals. Front or rear jam-nut panel mount versions available. Select front panel mount to reduce snagging and lower profile, or choose rear panel mount style where space within a box enclosure is limited. 100% tested to meet 1 X 10⁻⁷ ccHe/sec @ 1 atm helium leak rate. Operating temperature range of -65°C to +200° C. Coil spring securely retains mating plug connector and provides low shell-to-shell resistance for excellent EMI shielding. Not for use in liquid environments.

How To Order	
Sample Part Number	804-140 -07 ZNU 6-4 P N
Series	804-140 = Hermetic Receptacle
Shell Style (See Table I)	-00 = Jam-Nut, Front Panel Mount -07 = Jam-Nut, Rear Panel Mount
Shell Material and Finish	M = Aluminum / Electroless Nickel ME = Aluminum / Electroless Nickel, Thick NF = Aluminum / Cadmium-Nickel / Olive Drab ZN = Aluminum / Zinc-Nickel / Olivew Drab ZNU / ZR = Aluminum / Zinc-Nickel / Black Chromate
Shell Size - Insert Arrangement	See Contact Arrangements Page H-6
Contact Type	E = Pin, Solder Cup P = Pin, PC Tail F = Socket, Solder Cup S = Socket, PC Tail
Polarization (See Table II)	Omit = Single Master Key A = Normal B = Pos. B C = Pos. C D = Pos. D E = Pos. E F = Pos. F

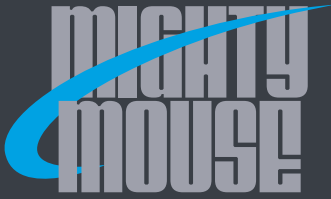
NOTES

1. Red Stripe indicator for alignment during mating
2. Contacts are non removable
3. Receptacle connector mates with all push/pull high density plug connectors with same polarization and opposite contact gender, 804-001, 804-002, 804-009, 804-006, and 804-080.
4. See page H-9 for recommended panel cut-outs
5. Performances:
 - temperature range:-65°C to +200°C
 - Hemeticity: -1 x 10⁻⁷ cc He/sec @ 1 ATM differential
 - DWM: 750 VAC @ seal level
 - IR: 5000 megohms @ 500 VDC minimum, room temperature
 - Connector shall not be used in liquid environment

Table I: Shell Style	
-00 Jam-Nut, Front Panel Mount	-07 Jam-Nut, Rear Panel Mount

Table II: Keyway Positions	
Pos.	A° B°
A	150° 210°
B	75° 210°
C	95° 230°
D	140° 275°
E	75° 210°
F	95° 210°

SERIES 804 QDC PUSH-PULL

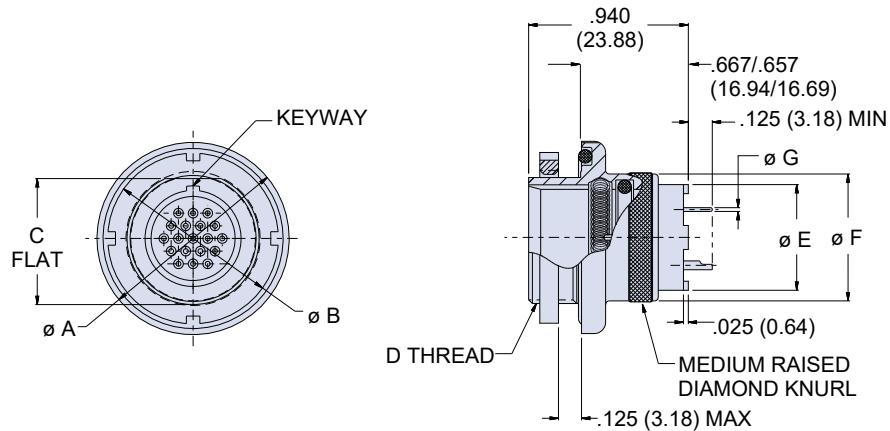


SERIES 804 QDC PUSH-PULL Mighty Mouse Connectors and Cables



Light Weight, Hermetic Jam-Nut Mount Receptacles with PC Tails or Solder Cups

JAM-NUT, REAR PANEL MOUNT RECEPTACLE - SHELL STYLE 07

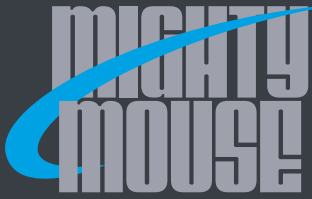


Dimensions							
Shell Size	ø A	ø B	C Flat	D Threads	ø E	ø F	ø G Tail Dia.
5	.790 (20.07)	.562 (14.27)	.415 (10.54)	.4375-32 UN-2A	.250 (6.35)	.450 (11.43)	#23 .018/.022 (0.46/0.56)
6	.830 (21.08)	.625 (15.88)	.467 (11.86)	.5000-32 UN-2A	.330	.520 (13.21)	
7	.910 (23.11)	.750 (19.05)	.594 (15.09)	.6250-28 UN-2A	.432 (10.97)	.580 (14.73)	
8	.955 (24.26)	.750 (19.05)	.594 (15.09)	.6250-28 UN-2A	.432 (10.97)	.580 (14.73)	#20 .024/.028 (0.61/0.71)
9	1.000 (25.40)	.812 (20.62)	.655 (16.64)	.6875-28 UN-2A	.551 (14.00)	.695 (17.65)	#16 .060/.064 (1.52/1.63)
10	1.085 (27.56)	.875 (22.23)	.721 (18.31)	.7500-28 UN-2A	.620 (15.75)	.735 (18.67)	
11	1.135 (28.83)	.938 (23.83)	.790 (20.07)	.8125-28 UN-2A	.662 (16.81)	.810 (20.57)	
12	1.190 (30.23)	1.000 (25.40)	.843 (21.41)	.8750-28 UN-2A	.703 (17.86)	.880 (22.35)	#12 .092/.096 (2.34/2.44)
14	1.325 (33.65)	1.125 (28.58)	.968 (24.59)	1.0000-28 UN-2A	.863 (21.92)	1.010 (25.65)	

Material and Finish

- Shell, jam-nut: see how to order table
- Insulator: high grade rigid dielectric / N.A.
- Interfacial seal and O-ring: fluorosilicone / N.A.
- Contact: copper alloy / gold plate per ASTM B 488, Type II, Code C, Class 1.25, over suitable underplate
- Sealing compound: potting encapsulant

SERIES 804 QDC PUSH-PULL



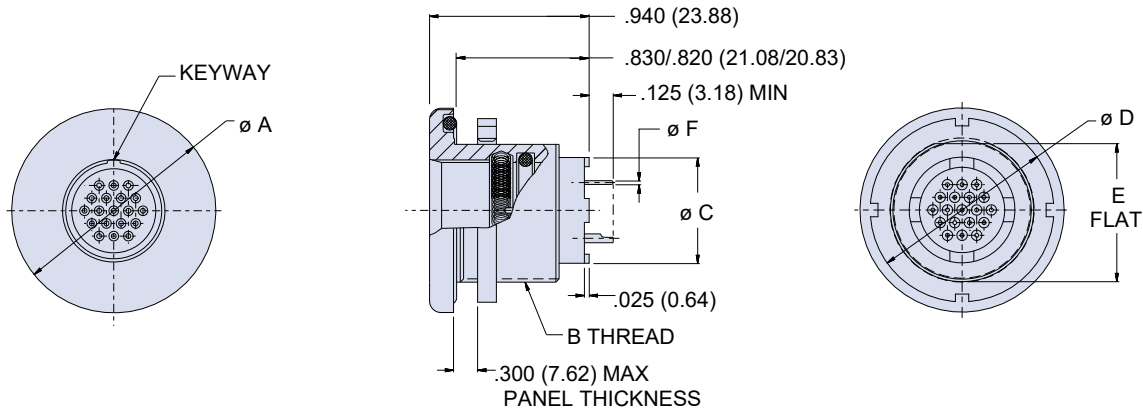
SERIES 804 QDC PUSH-PULL

Mighty Mouse Connectors and Cables



Light Weight, Hermetic Jam-Nut Mount Receptacles with PC Tails or Solder Cups

JAM-NUT, FRONT PANEL MOUNT RECEPTACLE- SHELL STYLE 00



Dimensions						
Shell Size	Ø A	B Threads	Ø C	Ø D	E Flat	Ø F Tail Dia.
5	.830 (21.08)	.5000-32 UN-2A	.250	.625 (15.88)	.470 (11.94)	#23 .018/.022 (0.46/0.56)
6	.885 (22.48)	.5625-28 UN-2A	.330	.688 (17.48)	.530 (13.46)	
7	.995 (25.27)	.6875-28 UN-2A	.432 (10.97)	.812 (20.62)	.663 (16.84)	
8	.995 (25.27)	.6875-28 UN-2A	.432 (10.97)	.812 (20.62)	.663 (16.84)	#20 .024/.028 (0.61/0.71)
9	1.075 (27.30)	.7500-28 UN-2A	.551 (14.00)	.875 (22.23)	.720 (18.29)	
10	1.140 (28.96)	.8125-28 UN-2A	.620 (15.75)	.938 (23.83)	.788 (20.02)	#16 .060/.064 (1.52/1.63)
11	1.190 (30.23)	.8750-28 UN-2A	.662 (16.81)	1.000 (25.40)	.843 (21.41)	
12	1.340 (34.04)	1.0000-28 UN-2A	.703 (17.86)	1.125 (28.58)	.970 (24.64)	#12 .092/.096 (2.34/2.44)
14	1.390 (35.31)	1.0625-20 UN-2A	.863 (21.92)	1.162 (29.51)	1.020 (25.91)	

Material and Finish

- Shell, jam-nut: see how to order table
- Insulator: high grade rigid dielectric / N.A.
- Interfacial seal and O-ring: fluorosilicone / N.A.
- Contact: copper alloy / gold plate per ASTM B 488, Type II, Code C, Class 1.25, over suitable underplate
- Sealing compound: potting encapsulant

SERIES 804 QDC PUSH-PULL