

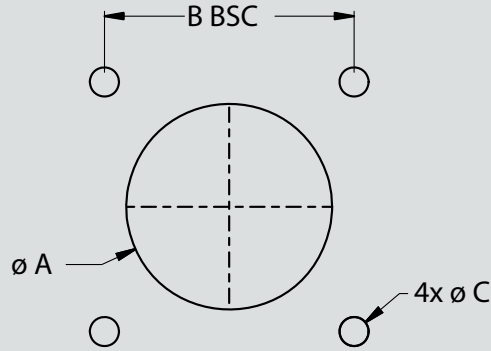
SERIES 80

Mighty Mouse Connectors and Cables



Square Flange Panel Cutout Dimensions

**SERIES 800, 801, 802, AND 805 SQUARE FLANGE PANEL CUTOUT DIMENSIONS**



Series 800				Series 801				Series 802				Series 805			
Shell Size	Ø A	B BSC	Ø C	Shell Size	Ø A	B BSC	Ø C	Shell Size	Ø A	B BSC	Ø C	Shell Size	Ø A	B BSC	Ø C
5	.328 (8.33)	.363 (9.22)	.098 (2.49) .094 (2.39)	5	.328 (8.33)	.363 (9.22)	.096 (2.44) .091 (2.31)	5	.332 (8.43)	.500 (12.70)	.125 (3.18)	8	.5155 (13.09)	.660 (16.76)	.096 (2.44) .091 (2.31)
6	.390 (9.91)	.423 (10.74)	.098 (2.49) .094 (2.39)	6	.390 (9.91)	.423 (10.74)	.096 (2.44) .091 (2.31)	6	.389 (9.88)	.625 (15.88)	.125 (3.18)	9	.578 (14.68)	4.723 (119.96)	.096 (2.44) .091 (2.31)
7	.453 (11.51)	.483 (12.27)	.132 (3.35) .128 (3.25)	7	.453 (11.51)	.483 (12.27)	.096 (2.44) .091 (2.31)	7	.515 (13.08)	.688 (17.48)	.125 (3.18)	10	.640 (16.26)	.785 (19.94)	.096 (2.44) .091 (2.31)
8	.515 (13.08)	.542 (13.77)	.132 (3.35) .128 (3.25)	8	.515 (13.08)	.545 (13.84)	.096 (2.44) .091 (2.31)	8	.567 (14.40)	.7450 (18.92)	.125 (3.18)	11	.7403 (18.80)	.848 (21.54)	.096 (2.44) .091 (2.31)
9	.578 (14.68)	.719 (18.26)	.132 (3.35) .128 (3.25)	9	.578 (14.68)	.607 (15.42)	.130 (3.30) .126 (3.20)	9	.639 (16.23)	.812 (20.62)	.125 (3.18)	12	.765 (19.43)	.909 (23.09)	.096 (2.44) .091 (2.31)
10	.640 (16.26)	.719 (18.26)	.132 (3.35) .128 (3.25)	10	.640 (16.26)	.670 (17.02)	.130 (3.30) .126 (3.20)	10	.694 (17.63)	.875 (22.23)	.125 (3.18)	13	.828 (21.03)	.973 (24.71)	.096 (2.44) .091 (2.31)
12	.765 (19.43)	.812 (20.62)	.132 (3.35) .128 (3.25)	11	.703 (17.86)	.715 (18.16)	.130 (3.30) .126 (3.20)	12	.770 (19.56)	.938 (23.83)	.125 (3.18)	15	.953 (24.21)	1.058 (26.87)	.130 (3.30) .126 (3.20)
14	.890 (22.61)	.906 (23.01)	.132 (3.35) .128 (3.25)	13	.828 (21.03)	.812 (20.62)	.130 (3.30) .126 (3.20)	14	.9415 (23.91)	1.125 (28.58)	.125 (3.18)	18	1.140 (28.96)	1.255 (31.88)	.130 (3.30) .126 (3.20)
15	.953 (24.21)	.969 (24.61)	.132 (3.35) .128 (3.25)	16	1.015 (25.78)	.981 (24.92)	.130 (3.30) .126 (3.20)	15	1.020 (25.91)	1.188 (30.18)	.125 (3.18)	19	1.203 (30.56)	1.327 (33.71)	.130 (3.30) .126 (3.20)
				17	1.078 (27.38)	1.060 (26.92)	.130 (3.30) .126 (3.20)					21	1.328 (33.73)	1.452 (36.88)	.130 (3.30) .126 (3.20)
				19	1.203 (30.56)	1.191 (30.25)	.130 (3.30) .126 (3.20)					23	1.453 (36.91)	1.570 (39.88)	.130 (3.30) .126 (3.20)
				21	1.328 (33.73)	1.322 (33.58)	.130 (3.30) .126 (3.20)								

General Information and Reference