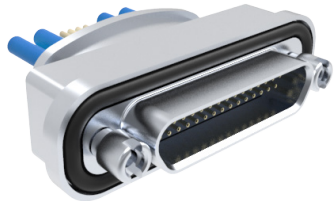


GHSRPM Prewired pin and socket rear panel-mount connectors:  
single-ended pigtails

GHSRPM



How To Order	
<b>Sample Part Number</b>	<b>GHSRPM 2 R -31 P -A 8 J 1 -18 R3 N</b>
<b>Series</b>	GHSRPM = Glenair High-Speed Micro-D, Rear Panel Mount
<b>Shell Finish</b>	2 = Nickel 5 = Gold
<b>Insulator Material</b>	R = PPS
<b>Contact Layout</b>	9, 15, 15E, 15U, 21, 25, 31, 37, 51-2, 67
<b>Contact Type</b>	P = Pin (Plug) S = Socket (Receptacle)
<b>High-Speed Cable Type</b>	A = Glenair Cable 963-128-28 (100 Ohm) B = Glenair Cable 963-130-28 (90 Ohm)
<b>Discrete Wire Gage (AWG)</b>	8 = #28 0 = #30 (J Wire Type only)
<b>Discrete Wire Type</b>	K = M22759/11 600 VRMS Teflon (TFE) J = M22759/33 600 VRMS Modified Cross-Linked Tefzel (ETFE)
<b>Discrete Wire Color</b>	1 = White 7 = Ten Color Repeating
<b>Wire Length</b>	Wire Length in Inches, 6 Inch Minimum; 18 = 18 Inches
<b>Hardware Type*</b>	Rear Panel Jackpost options R1 = .031" Panel R2 = .047" Panel R3 = .062" Panel R4 = .094" Panel R5 = .125" Panel R6 = .080" Panel
<b>O-Ring Material</b>	C = Conductive N = Non-Conductive (Nitrile)

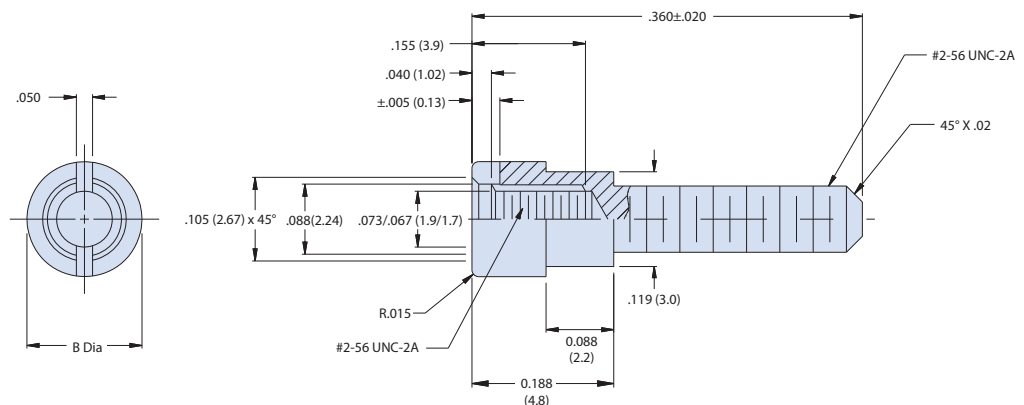
\*Refer to Appendix A for recommended panel cutout.



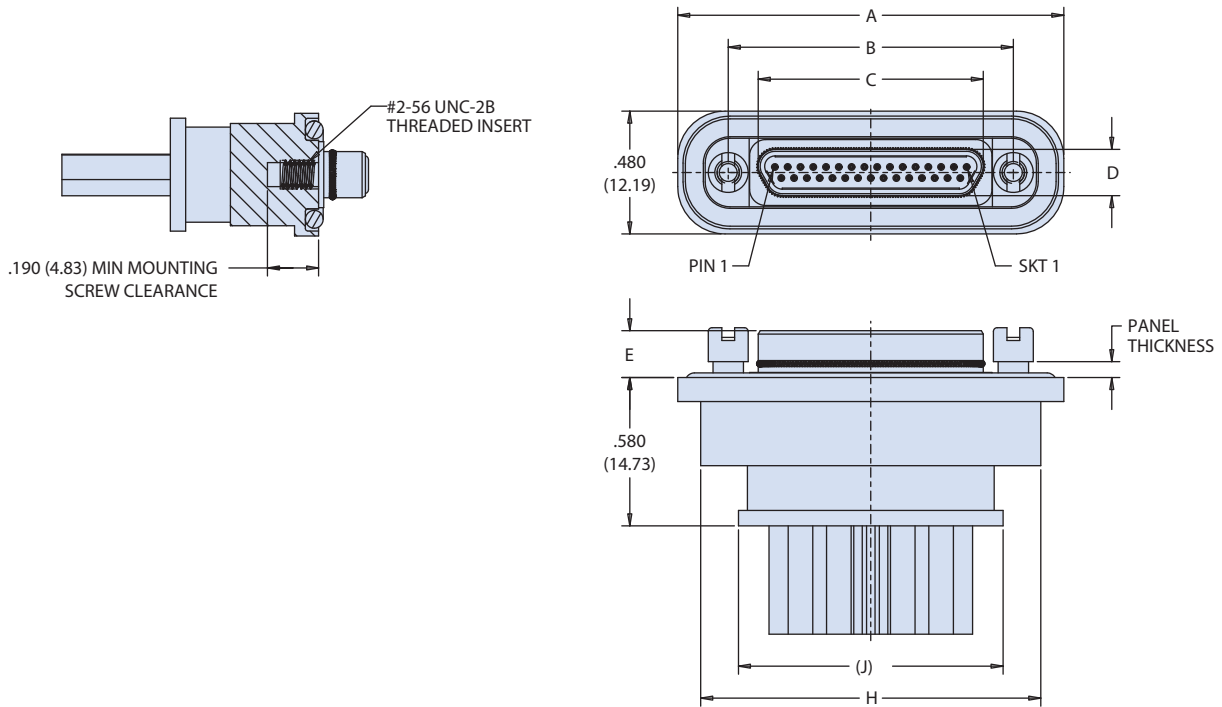
Rear Panel-Mount Mounting Hardware				
Code	Panel Thickness		J ± .003 (0.08)	K ± .005 (0.13)
	Fractional Value	Decimal Value		
R1	1/32	.031 (0.8)	.024 (0.6)	.050 (1.3)
R2	3/64	.047 (1.2)	.041 (1.0)	.050 (1.3)
R3	1/16	.062 (1.6)	.055 (1.4)	.050 (1.3)
R4	3/32	.094 (2.4)	.086 (2.2)	.050 (1.3)
R5	1/8	.125 (3.2)	.118 (3.0)	.030 (0.8)
R6	2/25	.080 (2.0)	.074 (1.9)	.050 (1.3)

**HARDWARE MATERIAL**

Corrosion-Resistant Steel IAW  
ASTM-A484 and ASTM-A582



GHSRPM Prewired pin and socket rear panel-mount connectors:  
single-ended pigtails



GHSRPM

Dimensions								
LAYOUT	A	B±.003	C MAX	D MAX	E±.003	F ±.003	J Ref	H
9P	1.510 (38.35)	.565 (14.35)	.333 (8.46)	.184 (4.67)	.183 (4.65)	1.110 (28.19)	.450 (11.43)	.720 (18.29)
9S	1.510 (38.35)	.565 (14.35)	.400 (10.16)	.250 (6.35)	.195 (4.95)	1.110 (28.19)	.450 (11.43)	.720 (18.29)
15P	1.660 (42.16)	.715 (18.16)	.483 (12.27)	.184 (4.67)	.183 (4.65)	1.260 (32.00)	.600 (15.24)	.870 (22.10)
15S	1.660 (42.16)	.715 (18.16)	.551 (14.00)	.250 (6.35)	.195 (4.95)	1.260 (32.00)	.600 (15.24)	.870 (22.10)
21P	1.810 (45.97)	.865 (21.97)	.633 (16.08)	.184 (4.67)	.183 (4.65)	1.410 (35.81)	.750 (19.05)	1.020 (25.91)
21S	1.810 (45.97)	.865 (21.97)	.701 (17.81)	.250 (6.35)	.195 (4.95)	1.410 (35.81)	.750 (19.05)	1.020 (25.91)
25P	1.910 (48.51)	.965 (24.51)	.733 (18.62)	.184 (4.67)	.183 (4.65)	1.510 (38.35)	.850 (21.59)	1.120 (28.45)
25S	1.910 (48.51)	.965 (24.51)	.801 (20.35)	.250 (6.35)	.195 (4.95)	1.510 (38.35)	.850 (21.59)	1.120 (28.45)
31P	2.060 (52.32)	1.115 (28.32)	.883 (22.43)	.184 (4.67)	.183 (4.65)	1.660 (42.16)	1.000 (25.40)	1.270 (32.26)
31S	2.060 (52.32)	1.115 (28.32)	.951 (24.16)	.250 (6.35)	.195 (4.95)	1.660 (42.16)	1.000 (25.40)	1.270 (32.26)
37P	2.210 (56.13)	1.265 (32.13)	1.033 (26.24)	.184 (4.67)	.183 (4.65)	1.810 (45.97)	1.150 (29.21)	1.420 (36.07)
37S	2.210 (56.13)	1.265 (32.13)	1.101 (27.97)	.250 (6.35)	.195 (4.95)	1.810 (45.97)	1.150 (29.21)	1.420 (36.07)
51-2P	2.560 (65.02)	1.615 (41.02)	1.384 (35.15)	.184 (4.67)	.183 (4.65)	2.160 (54.86)	1.500 (38.10)	1.770 (44.96)
51-2S	2.560 (65.02)	1.615 (41.02)	1.450 (36.83)	.250 (6.35)	.195 (4.95)	2.160 (54.86)	1.500 (38.10)	1.770 (44.96)
67P	2.960 (75.18)	2.015 (51.18)	1.784 (45.31)	.184 (4.67)	.183 (4.65)	2.560 (65.02)	1.900 (48.26)	2.170 (55.12)
67S	2.960 (75.18)	2.015 (51.18)	1.850 (46.99)	.250 (6.35)	.195 (4.95)	2.560 (65.02)	1.900 (48.26)	2.170 (55.12)