



240-804

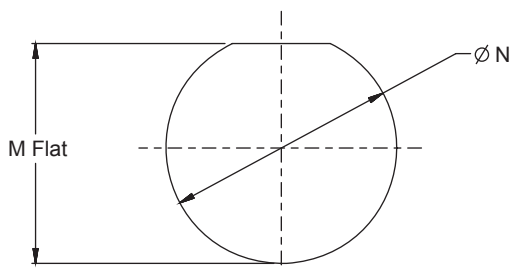
## Series 804 Mighty Mouse Filter Connector Jam Nut Receptacle, Push-Pull Quick Disconnect

### MIGHTY MOUSE PUSH-PULL JAM NUT RECEPTACLE FILTER CONNECTOR

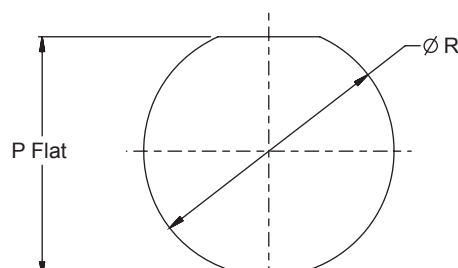
How To Order	
Sample Part Number	240-804- 07 M 6-7 P S P A A
Filter Connector	Series 804 Mighty Mouse Push-Pull
Shell Style	07 = Rear mount jam nut receptacle with PCB contacts      08 = Front mount jam nut receptacle with PCB contacts
Shell Material/Finish	See Table I
Insert Arrangement	See pages C-3 – C-7
Contact Gender	P = Pin    S = Socket
Termination Type	P = PC Tail    S = Solder Cup
Filter Type	P = Pi Circuit    C = C Circuit (See Note 1)
Capacitance	See Table II
Alternate Key Position	A, B, C, D, E, F, U    A = Normal, U = Universal (See page C-2)

Sym	Material	Finish Description
M	Aluminum	Electroless Nickel
MT		Ni-PTFE 1000 Hour Grey™ Nickel Fluorocarbon Polymer
NF		Cadmium, Olive Drab over Electroless Nickel
ZN		Zinc-Nickel, Olive Drab
ZR		Zinc-Nickel, Black - RoHS
ZL	Stainless Steel	Electro-Deposited Nickel

Class	Pi - Circuit (pF)	C - Circuit (pF)
A	38,000 - 56,000	19,000 - 28,000
B	32,000 - 45,000	16,000 - 22,500
C	18,000 - 33,000	9,000 - 16,500
D	8,000 - 12,000	4,000 - 6,000
E	3,300 - 5,000	1,650 - 2,500
F	800 - 1,300	400 - 650
G	400 - 600	200 - 300
J	70 - 120	35 - 60



Recommended Panel Cut-Out for  
Rear Mount Jam Nut Receptacle



Recommended Panel Cut-Out for  
Front Mount Jam Nut Receptacle

Contact Size	Ø U
23	.022 (0.56)
	.018 (0.46)
20	.028 (0.71)
	.024 (0.61)
16	.042 (1.07)
	.038 (0.97)
12	.096 (2.44)
	.092 (2.34)

#### Notes

- Other filter styles (C-L, L-C, Unbalanced Pi, Multi-Stage, Multi-Value) are available, please consult the factory.

Dimensions in inches (millimeters) and are subject to change without notice.