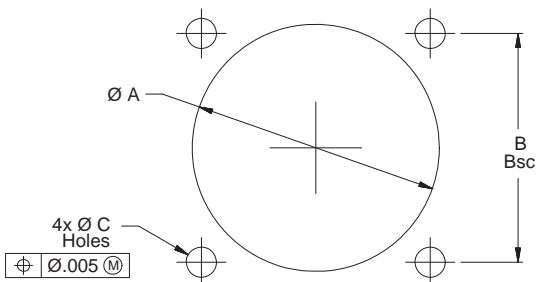


MIL-DTL-26482 Series II Type Filter Connector with Bayonet Coupling Insert Arrangements



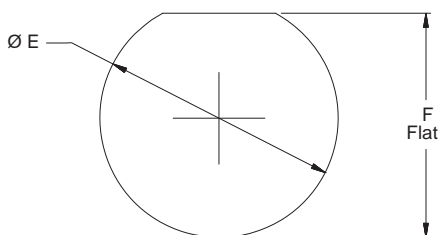
MIL-DTL-26482
Type



Narrow Flange
Mount Per MS3470

| MIL-DTL-26482 Series II Narrow Flange Panel Cutouts | | | |
|--|--------------|--------------|--------------------------|
| Shell Size | Ø A | B Bsc | Ø C Holes |
| 8 | .573 (14.6) | .594 (15.1) | .130 (3.3) .110 (2.8) |
| | .563 (14.3) | | |
| 10 | .690 (17.5) | .719 (18.3) | |
| | .680 (17.3) | | |
| 12 | .869 (22.1) | .812 (20.6) | |
| | .859 (21.8) | | |
| 14 | .994 (25.2) | .906 (23.0) | |
| | .984 (25.0) | | |
| 16 | 1.118 (28.4) | .969 (24.6) | |
| | 1.108 (28.1) | | |
| 18 | 1.243 (31.6) | 1.062 (27.0) | |
| | 1.233 (31.3) | | |
| 20 | 1.368 (34.7) | 1.156 (29.4) | |
| | 1.358 (34.5) | | |
| 22 | 1.493 (37.9) | 1.250 (31.8) | |
| | 1.483 (37.7) | | |
| 24 | 1.620 (41.1) | 1.375 (34.9) | .157 (4.0) |
| | 1.610 (40.9) | | .137 (3.5) |

B



NOTE: Glenair MIL-DTL-26482 type filter connectors mate with both Series I and II 26482 products

| MIL-DTL-26482 Series II Jam Nut Panel Cut-Out | | |
|--|--------------|--------------|
| Shell Size | Ø E | F Flat |
| 8 | .577 (14.7) | .541 (13.7) |
| | .567 (14.4) | .531 (13.5) |
| 10 | .702 (17.8) | .666 (16.9) |
| | .692 (17.6) | .656 (16.7) |
| 12 | .900 (22.9) | .829 (21.1) |
| | .890 (22.6) | .819 (20.8) |
| 14 | 1.015 (25.8) | .953 (24.2) |
| | 1.005 (25.5) | .943 (24.0) |
| 16 | 1.140 (29.0) | 1.077 (27.4) |
| | 1.130 (28.7) | 1.067 (27.1) |
| 18 | 1.265 (32.1) | 1.202 (30.5) |
| | 1.255 (31.9) | 1.192 (30.3) |
| 20 | 1.390 (35.3) | 1.327 (33.7) |
| | 1.380 (35.1) | 1.317 (33.5) |
| 22 | 1.515 (38.5) | 1.452 (36.9) |
| | 1.505 (38.2) | 1.442 (36.6) |
| 24 | 1.640 (41.7) | 1.577 (40.1) |
| | 1.630 (41.4) | 1.567 (39.8) |

Dimensions in inches (millimeters) and are subject to change without notice.